

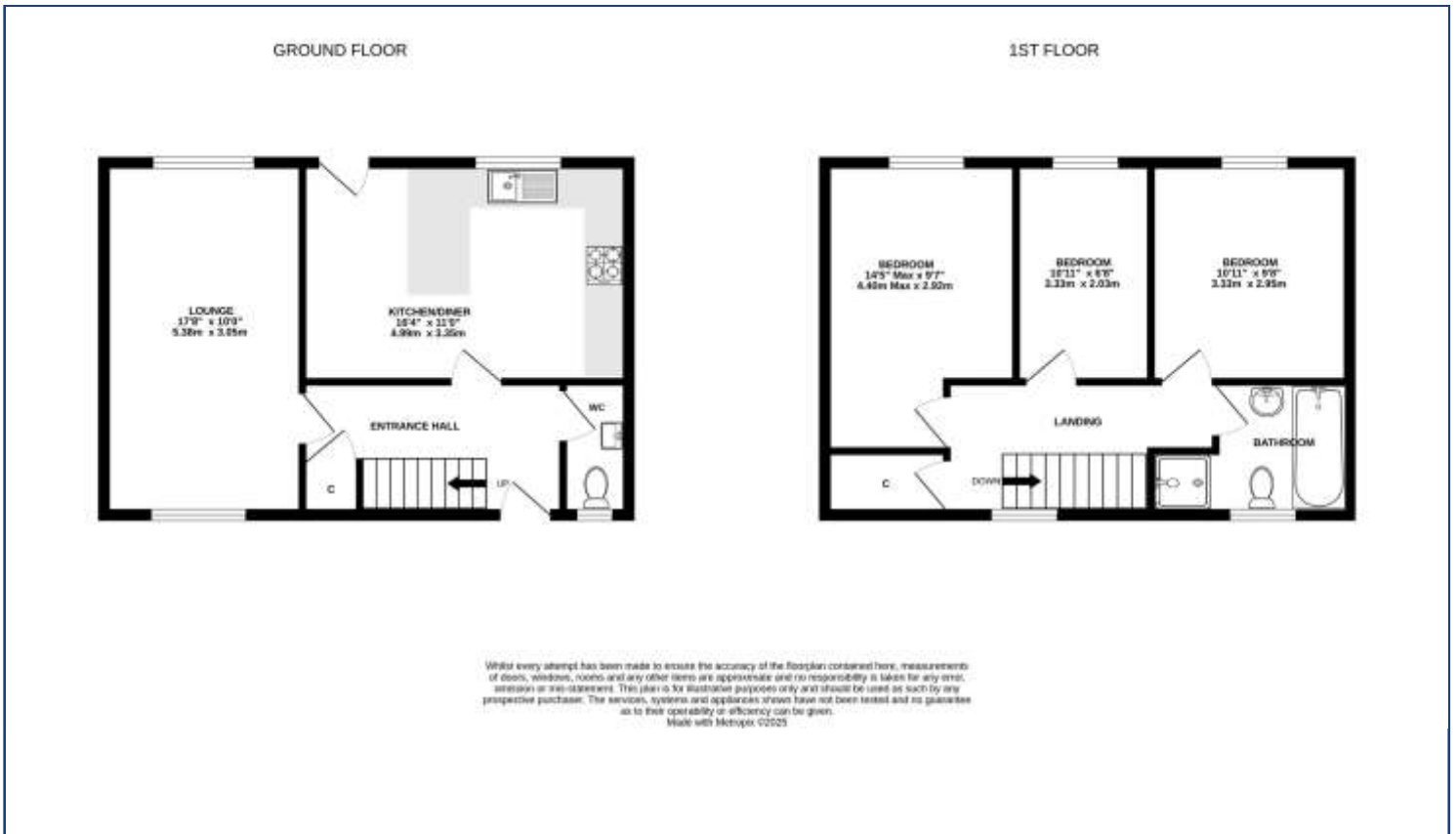


**ICONIC**  
ESTATE AGENTS

Honey Close, Norwich  
OIEO £240,000 Freehold



- Well Presented End Of Terrace House
- Three Well Proportioned Bedrooms
- Re-Fitted Kitchen/Diner
- Spacious Lounge
- Re-Fitted Four Piece Family Bathroom Suite
- Enclosed Garden
- En-Bloc Garage & Parking
- Offered With No Onward Chain
- LPG Central Heating
- EPC Rating F / Council Tax Band B



From Plumstead Road, turn into Knox Road and turn right into Honey Close where the property can be found indicated by our For Sale Board

Viewings strictly by appointment with: 297 Fakenham Road, Norwich, NR8 6LE

Taverham **01603 261104**  
Norwich **01603 740044**



We bring to prospective purchasers attention that we, as estate agents for the property, have not tested any appliances and purchasers should make their own enquiries of the relevant Authorities regarding the connection and viability of all services. These particulars, whilst believed to be accurate are set out as a general outline only for guidance and do not constitute any part of an offer or contract. Intending purchasers should not rely on them as statements of representation of fact, but must satisfy themselves by inspection or otherwise as to their accuracy.