



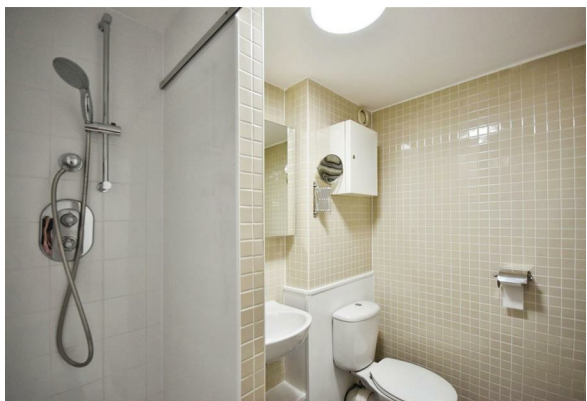
QUILLIAM

Otho Court
Brentford

- Heating Included
- Access to communal garden
- Maisonette Entrance
- Newly Decorated
- Gallery Kitchen
- Private Balcony
- Shower Room
- Unfurnished
- Wooden Flooring Throughout
- 24/7 Security

£2,150 PCM





Property Description

A beautifully presented two double bedroom apartment situated within the sought-after Brentford Dock development, offering bright and spacious accommodation, excellent storage, and the benefit of allocated parking.

Recently redecorated throughout, this well-maintained apartment features a generous reception room with direct access to a private balcony, providing an ideal space to relax or entertain. The separate modern fitted kitchen offers ample worktop and storage space, while the contemporary shower room has been finished to a high standard.

Both bedrooms are well-proportioned doubles, complemented by exceptional storage throughout the property, including a large entrance storage cupboard.

Residents of Brentford Dock enjoy beautifully maintained communal gardens, secure fob entry, and a peaceful waterside setting, all within easy reach of Brentford High Street, local shops, cafés, restaurants, and excellent transport links.

Accommodation

ACCOMMODATION

Entrance Hall

Reception Room

16'0" x 10'9"

Balcony

10'0" x 4'0"

Kitchen

15'5" x 7'10"

Bedroom one

11'9" x 10'9"

Bedroom two

14'4" x 8'9"

Shower-room

7'1" x 5'2"



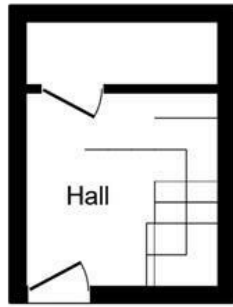
Property Information

The property is to be let on an Assured Periodic Tenancy. Dilapidation's Deposit will be equivalent to five weeks rent. We have been informed by the Landlord of the following information:

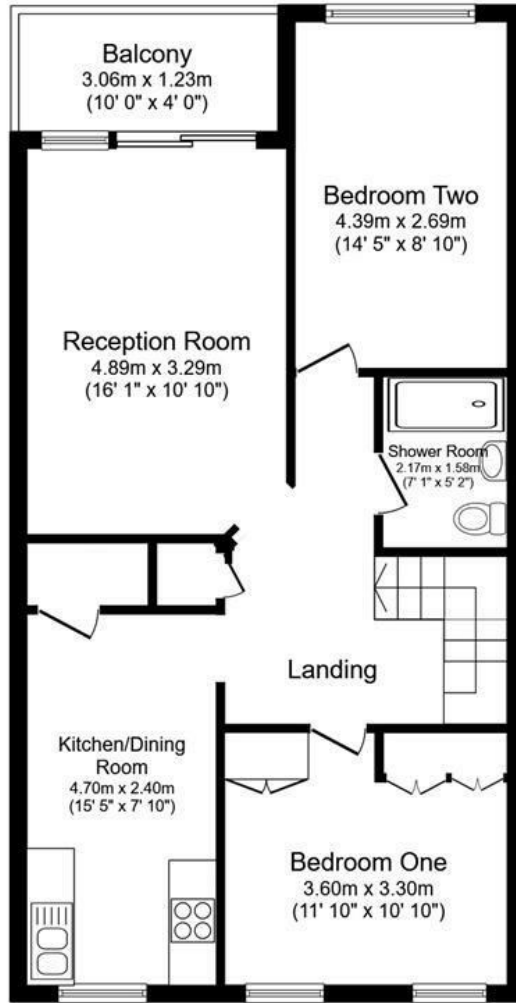
London Borough of Hounslow Council Tax Band: D
Council Tax Payable for 2026/27 £2,189.83 per annum
The annual Council Tax charge has been supplied in good faith. It will likely be reviewed and changed by the Local Authority the following year and could be subject to an increase after the end of March.

Parking: Allocated space





Third Floor
Floor area 8.1 sq.m. (88 sq.ft.)



Fourth Floor
Floor area 68.6 sq.m. (739 sq.ft.)

Total floor area: 76.8 sq.m. (826 sq.ft.)

This floor plan is for illustrative purposes only. It is not drawn to scale. Any measurements, floor areas (including any total floor area), openings and orientations are approximate. No details are guaranteed, they cannot be relied upon for any purpose and do not form any part of any agreement. No liability is taken for any error, omission or misstatement. A party must rely upon its own inspection(s). Powered by www.Propertybox.io



Energy Efficiency Rating		Current	Potential
Very energy efficient - lower running costs			
(92 plus) A			
(81-91) B			
(69-80) C			
(55-68) D			
(39-54) E			
(21-38) F			
(1-20) G			
Not energy efficient - higher running costs			
England & Wales		55	66
	EU Directive 2002/91/EC		



206 High Street
Brentford
TW8 8AH

020 8847 4737
info@quilliam.co.uk
<https://www.quilliam.co.uk>

Agents Note: Whilst every care has been taken to prepare these particulars, they are for guidance purposes only. All measurements are approximate and are for general guidance purposes only and whilst every care has been taken to ensure their accuracy, they should not be relied upon and potential buyers/tenants are advised to recheck the measurements