







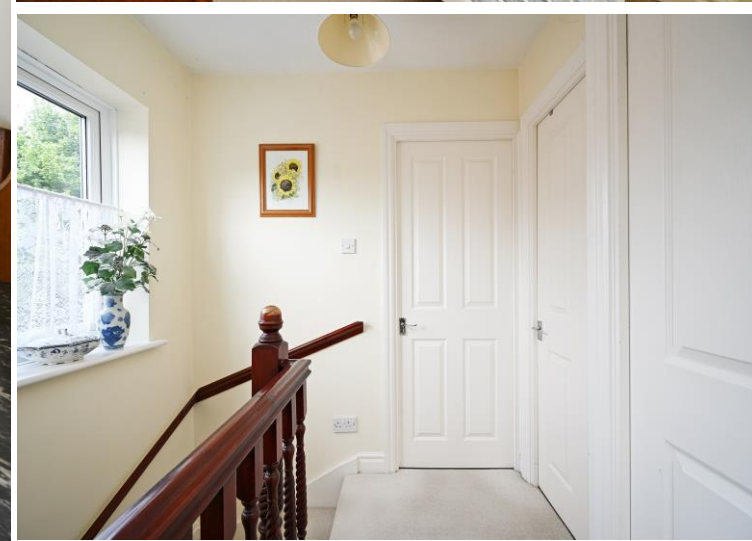
## 24 Periwood Drive

Millhouses • Sheffield • S8 0HR

Guide Price £285,000 - £300,000

An attractive three-bedroom semi-detached family home, tucked away at the end of a quiet cul-de-sac on Periwood Drive in the highly sought-after suburb of Millhouses, offering a light, airy and welcoming feel throughout. The property benefits from an attractive enclosed rear garden, off-street parking and is available with no onward chain. A composite front door opens into the accommodation, where the cosy living room features a fireplace and front-facing window, creating a warm and inviting space to relax. To the rear, the spacious dining kitchen is fitted with a range of units complemented by tiled splashbacks and wood-effect worktops, with ample space for a dining table. Additional features include a wall-mounted condensing boiler, a useful walk-in under-stairs storage cupboard, and a rear uPVC door providing direct access to the garden. To the first floor are two well-proportioned double bedrooms and a third single bedroom. The front-facing double bedroom is bright and cheerful, finished in soft pastel tones with neutral carpeting, while the rear double bedroom enjoys pleasant views over the garden. The third bedroom would make an ideal nursery, home office or study. The bathroom is fitted with a modern white three-piece suite incorporating a shower over the bath, complemented by partial tiling and a contemporary finish. A useful storage cupboard houses the water tank and provides practical storage space, while there is also access to the loft for additional storage. Externally, the property benefits from a driveway providing off-road parking for multiple vehicles. To the rear is a fully enclosed private garden featuring a hard-standing area with a summer house and shed, a paved seating terrace, partial lawn, and a decked seating area at the far end. Mature trees, planted borders and colourful planting create an attractive outdoor space ideal for entertaining and family life. Periwood Drive is located within the ever-popular suburb of Millhouses, one of Sheffield's most desirable residential areas, well regarded for its excellent local amenities, highly regarded schools and convenient transport links into the city centre and surrounding areas. The property is within easy reach of Millhouses Park and Ecclesall Woods, offering excellent outdoor recreation, while nearby Abbeydale Road and Ecclesall Road provide a wide range of cafés, restaurants, shops and leisure facilities.



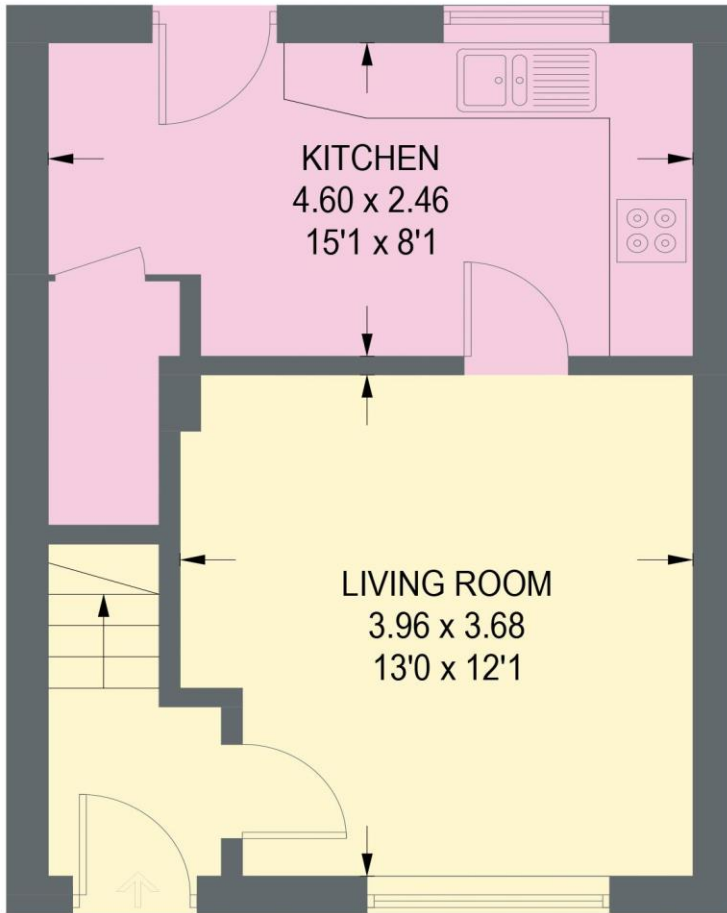


- Attractive Semi-Detached Family Home
- 3 Bedrooms & Family Bathroom
- Tucked Away on a Quiet Cul-De-Sac
- Spacious Dining Kitchen
- Cheerful, Light & Airy Decor
- Convenient Popular Location in S8
- Off Street Parking
- Beautiful Private Rear Garden
- Freehold & No Chain
- Council Tax Band C, EPC Rating TBC

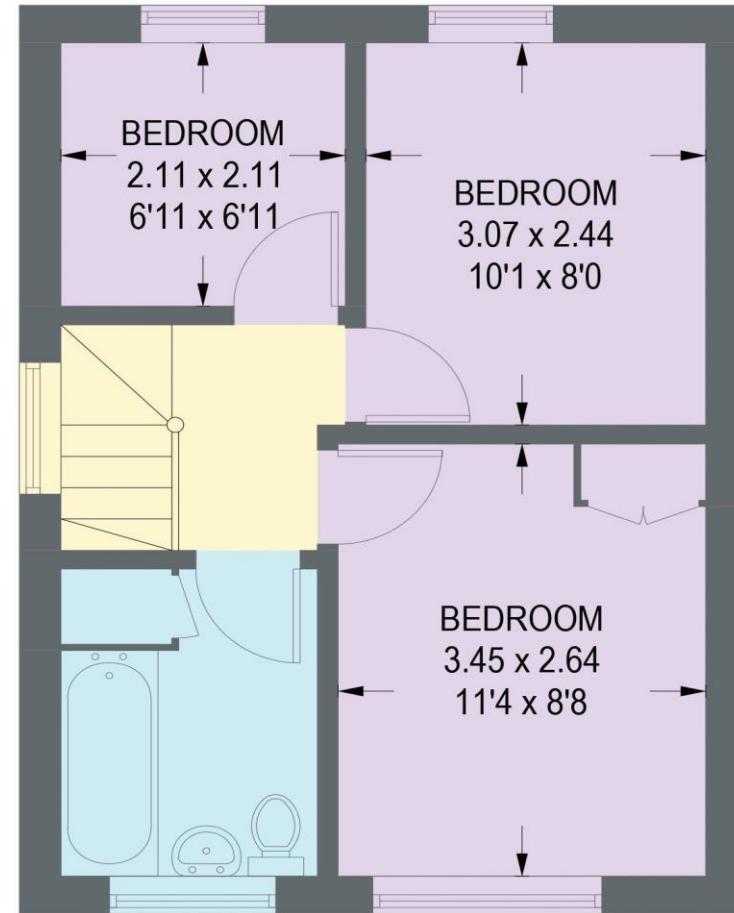


# 24 PERIWOOD GROVE

APPROXIMATE GROSS INTERNAL AREA = 62.1 SQ M / 669 SQ FT



**IN**  
**GROUND FLOOR**  
**31.2 SQ M / 336 SQ FT**



**FIRST FLOOR**  
**30.9 SQ M / 333 SQ FT**

Illustration for identification purposes only,  
measurements are approximate, not to scale.



**haus**

West Bar House, 137 West Bar, Sheffield, S3 8PU  
[hello@haushomes.co.uk](mailto:hello@haushomes.co.uk) [haushomes.co.uk](http://haushomes.co.uk)

0114 276 8868