



## Cosmeston Drive, £400,000

- THREE BEDROOM DETACHED
- OPEN PLAN LIVING SPACE
- DRIVEWAY & GARAGE
- NO CHAIN
- Council Tax - E
- EPC Rating: C



 3  1  1



## About the property

NO CHAIN - DRIVEWAY & GARAGE - CLOSE TO COSMESTON COUNTRY PARK

This three bedroom detached property comprises an open plan living room and dining room plus kitchen on the ground floor along with a generous garden and three bedrooms and a bathroom upstairs. Sold with no ongoing chain.

## Accommodation

### Entrance Hall

Window to front, oak flooring, radiator. doors to living/dining room and kitchen. Stairs to the first floor with under stairs storage.

### Living/Dining Room

12' 8" Max x 21' 9" ( 3.86m Max x 6.63m )

Window to front and doors to the rear garden, two radiators, carpet, electric fire and surround, archway to kitchen.

### Kitchen

9' 6" Max x 12' 9" ( 2.90m Max x 3.89m )



Door to rear garden, window to rear, wall and base units, sink, integrated appliances including an electric oven, five burner gas hob and extractor hood, dishwasher. Space for fridge freezer and washing machine. Tiled floor.

## Landing

Carpet to the stairs and landing, built in cupboard with fitted shelving, loft hatch, doors to bedrooms and family bathroom.

## Bedroom One

12' 5" x 9' 7" ( 3.78m x 2.92m )

Window to rear with sea views, carpet, radiator, built in wardrobe.

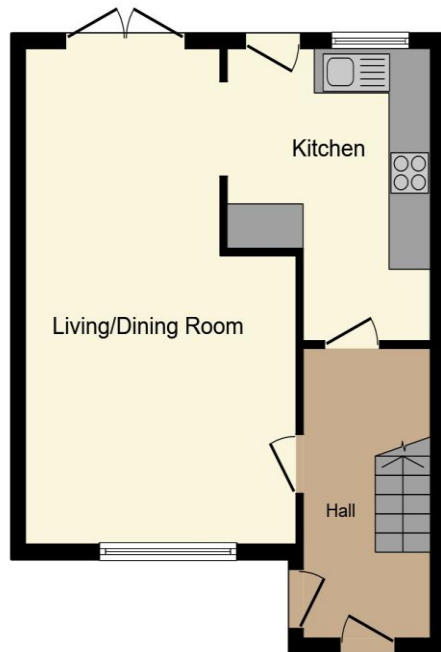
## Bedroom Two

8' 8" x 11' 8" ( 2.64m x 3.56m )

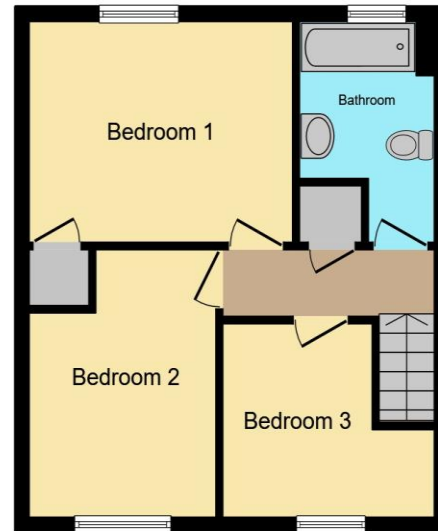
Window to front, carpet, radiator.

## Bedroom Three

## Floorplan



**Ground Floor**



**First Floor**

This floor plan is for illustrative purposes only. It is not drawn to scale. Any measurements, floor areas (including any total floor area), openings and orientation are approximate. No details are guaranteed, they cannot be relied upon for any purpose and they do not form part of any agreement. No liability is taken for any error, omission or misstatement. A party must rely upon its own inspection(s). Powered by [www.propertybox.io](http://www.propertybox.io)

## Important Information

Note while we endeavour to make our sales details accurate and reliable, if there is any point which is of particular interest to you, please contact the office and we will be pleased to confirm the position for you. We have not personally tested any apparatus, equipment, fixtures, fittings or services and cannot verify they are in working order or fit for their purposes. Nothing in these particulars is intended to indicate that carpets or curtains, furnishings or fittings, electrical goods (whether wired or not). Gas fires or light fittings or any other fixtures not expressly included form part of the property offered for sale. This computer generated Floorplan, if applicable, is intended as a general guide to the layout and design of the property. It is not to scale and should not be relied upon for dimensions. Tenure: We cannot confirm the tenure of the property as we have not had access to the legal documents. The buyer is advised to obtain verification from their solicitor or surveyor.