



10 Grove Park Crescent

Gosforth



DOVE PARK CRESCENT

10 Grove Park Crescent, Gosforth, NE3 1BP

A stylish and well presented ground floor apartment, occupying an enviable position within the highly sought after Grove Park development in the heart of Gosforth, with secure entry and an allocated parking space.

The development is ideally placed within central Gosforth, just a short distance from Gosforth High Street with its excellent range of cafés, restaurants, shops and local amenities. Ilford Road and South Gosforth Metro Stations are also within walking distance, providing convenient access into Newcastle City Centre and beyond.

The accommodation comprises: Secure communal entrance | Private ground floor entrance | Welcoming reception hallway | Principal double bedroom with fitted wardrobes and ensuite shower room/WC | Second double bedroom with fitted wardrobes | Family bathroom/WC | Spacious and light-filled sitting/dining room providing excellent entertaining space | Well maintained fitted kitchen with a range of integrated appliances.





Externally, the apartment benefits from one allocated parking space.

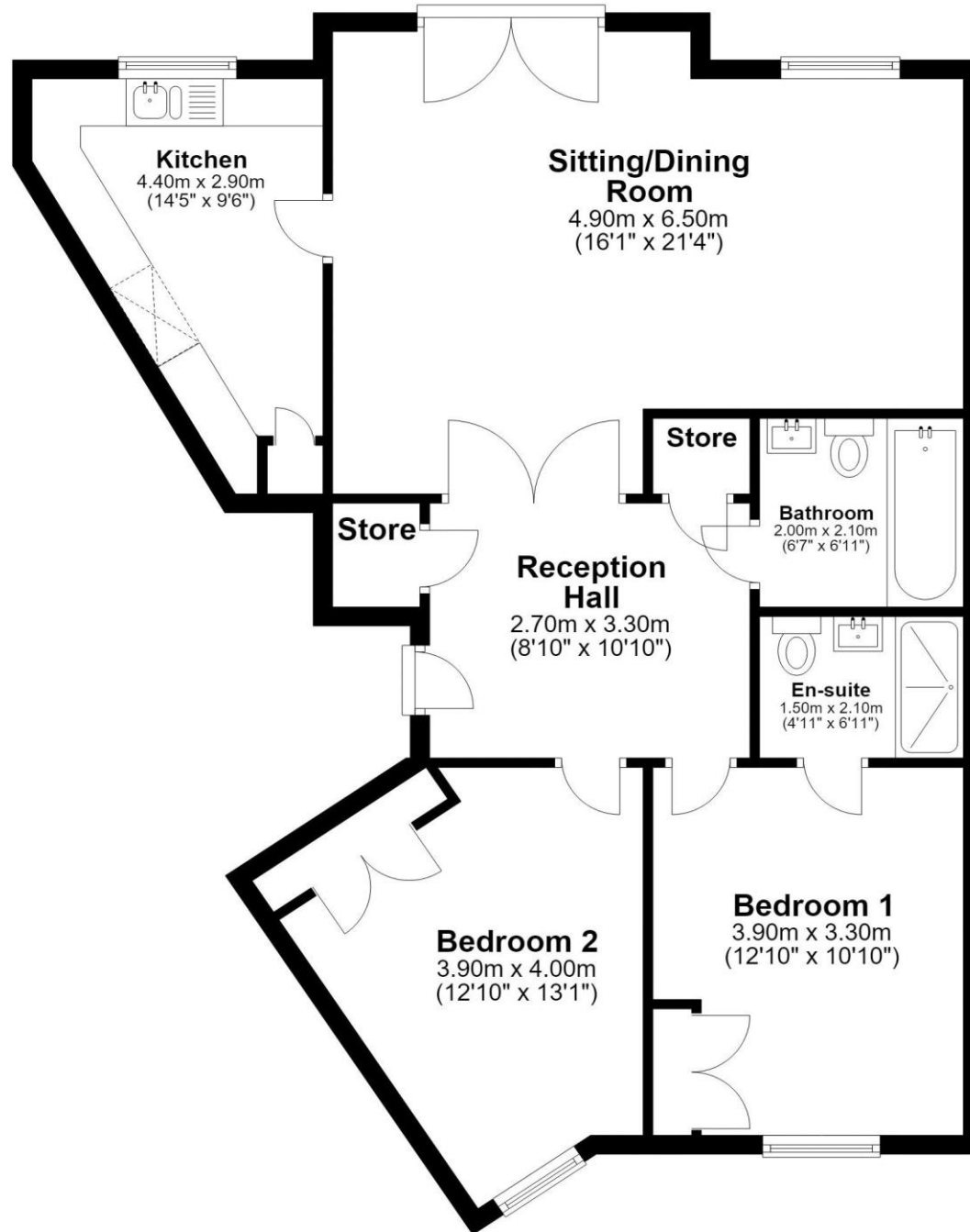
A superb apartment, perfectly suited to professionals, downsizers and investors alike, offering spacious accommodation within one of Gosforth's most desirable residential developments.

Services: Mains electric, gas, water and drainage | Tenure: Leasehold | Lease Remaining: 176 years | Service Charge: £3,376 per annum | Ground Rent: £250 per annum | Council Tax: Band C | Energy Performance Certificate: Rating C.

Price Guide: Guide Price £255,000

Ground Floor

Approx. 83.5 sq. metres (899.2 sq. feet)



Total area: approx. 83.5 sq. metres (899.2 sq. feet)

10 Grove Park Crescent, Gosforth



SANDERSON YOUNG

Regional Gosforth Office
95 High Street | Gosforth
Newcastle upon Tyne | NE3 4AA
gosforth@sandersonyoung.co.uk
0191 213 0033