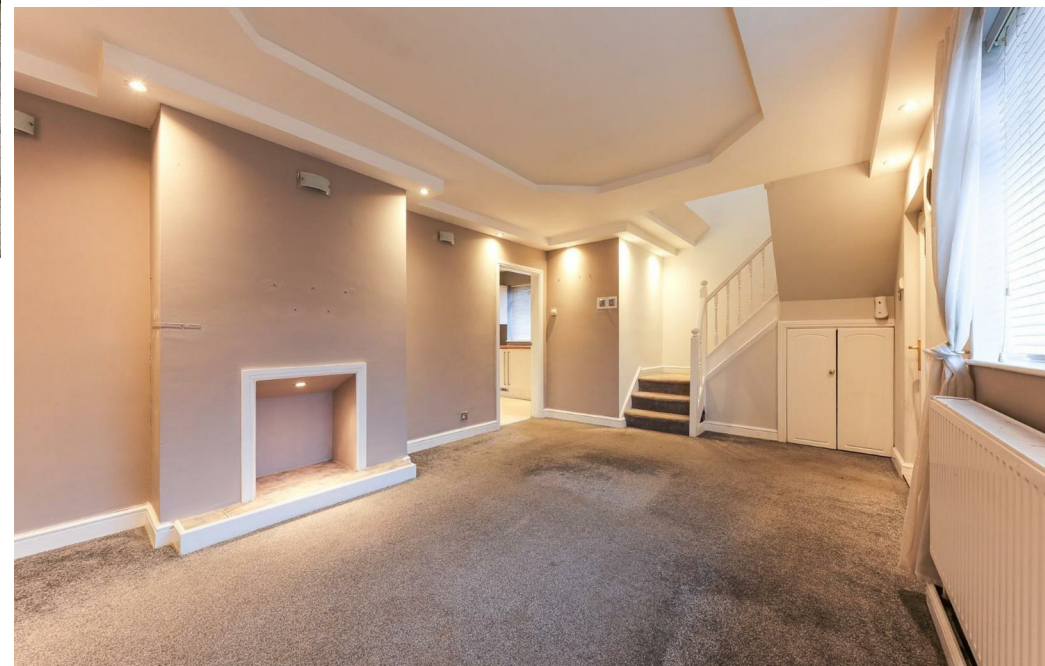




Alexander Hudson Estates

Sales Particulars



The Property

Alexander Hudson Estates is pleased to present this bright and spacious three-bedroom semi-detached family home, with additional loft room, ideally located in the sought-after residential area of Forest Hall, NE12.

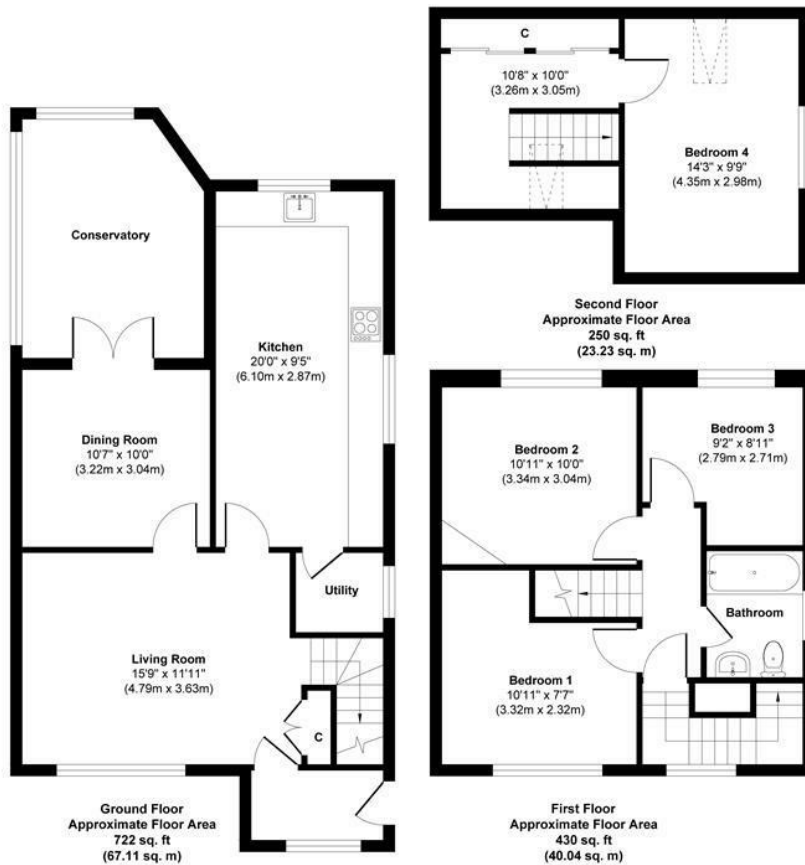
The property offers fantastic space, featuring a welcoming entrance hallway, leading into spacious living room. A large modern kitchen, leading to a utility room is accessed from the living room, so too is light and airy separate dining room running into a large conservatory offering views of the private rear garden.

Upstairs, three generously sized bedrooms and a modern family bathroom provide comfortable living space on the first floor. A fourth bedroom has been created in the loft space.

Externally, the property sits on a corner plot offering off street parking for multiple cars. The front of the property is low maintenance block paving with a large lean-to storage. The private rear garden features a patio area, lawn areas with large shed, offering an ideal outdoor space for relaxing or entertaining.

Palmersville is a well-connected suburb in North Tyneside with historic ties to the area's mining past. It offers a mix of housing, local shops, and cafés, with a friendly atmosphere for families and professionals. Palmersville Metro Station provides direct links to Newcastle city centre and the coast, while the A19 and A1 ensure easy road travel. Larger shopping and leisure facilities are nearby in Killingworth, Longbenton, and Benton. Families are well served by nurseries, primary schools, and secondary schools, making Palmersville a practical and popular choice for modern living.

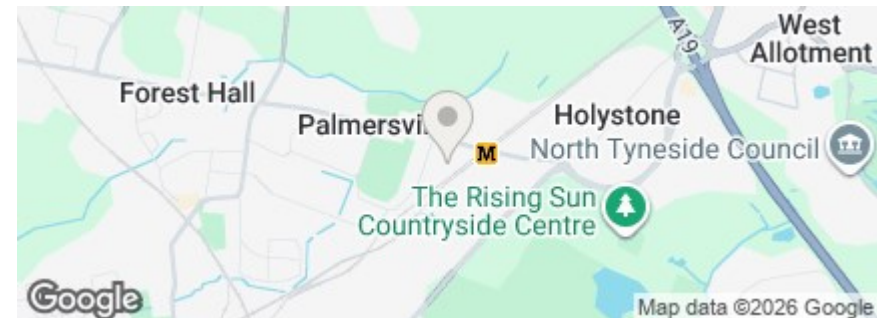
#Palmersville #ForestGate #NE12Homes #FamilyLiving #LocalShops #MetroAccess #CommunityVibes #NorthTyneside #ConvenientLocation #ModernHomes



Approx. Gross Internal Floor Area 1402 sq. ft / 130.38 sq. m

Illustration for identification purpose only, measurements approximate and not to scale, unauthorized reproduction is prohibited. All rights reserved for Alexander Hudson Estates

Freehold
Council Tax: A
EPC Rating: 63





Alexander Hudson Estates
The Printworks
20 Arrow Close
NE12 6QN

0191 268 7433
sales@alexanderhudson.co.uk