






{ LENNOX GARDENS KNIGHTSBRIDGE SW1X  
£2,054 PER WEEK AVAILABLE 06/02/2026

Hamptons  
THE HOME EXPERTS

# { THE PARTICULARS

Lennox Gardens Knightsbridge  
SW1X

£2,054 Per Week  
Unfurnished

 3 Bedrooms  
 2 Bathrooms  
 1 Reception

## Features

- 3 Bedrooms, - 2 Bathrooms, - First & Second Floor, - Lift, - Wood Floor, - High Ceiling, - Communal Gardens, - Council Tax Band H  
Council Tax  
Council Tax Band H

Hamptons  
7 Lower Sloane Street  
Sloane Square, London, SW1W 8AH  
020 7824 8242  
[sloanesquarelettings@hamptons.co.uk](mailto:sloanesquarelettings@hamptons.co.uk)  
[www.hamptons.co.uk](http://www.hamptons.co.uk)

# { A FIRST & SECOND FLOOR SPACIOUS THREE BEDROOM APARTMENT.

## The Property

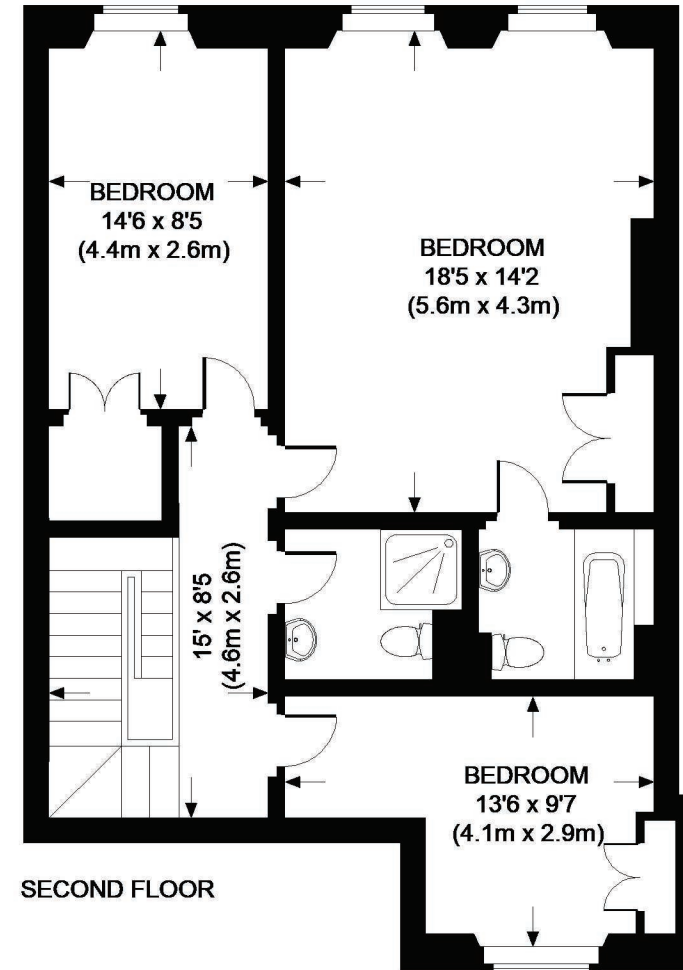
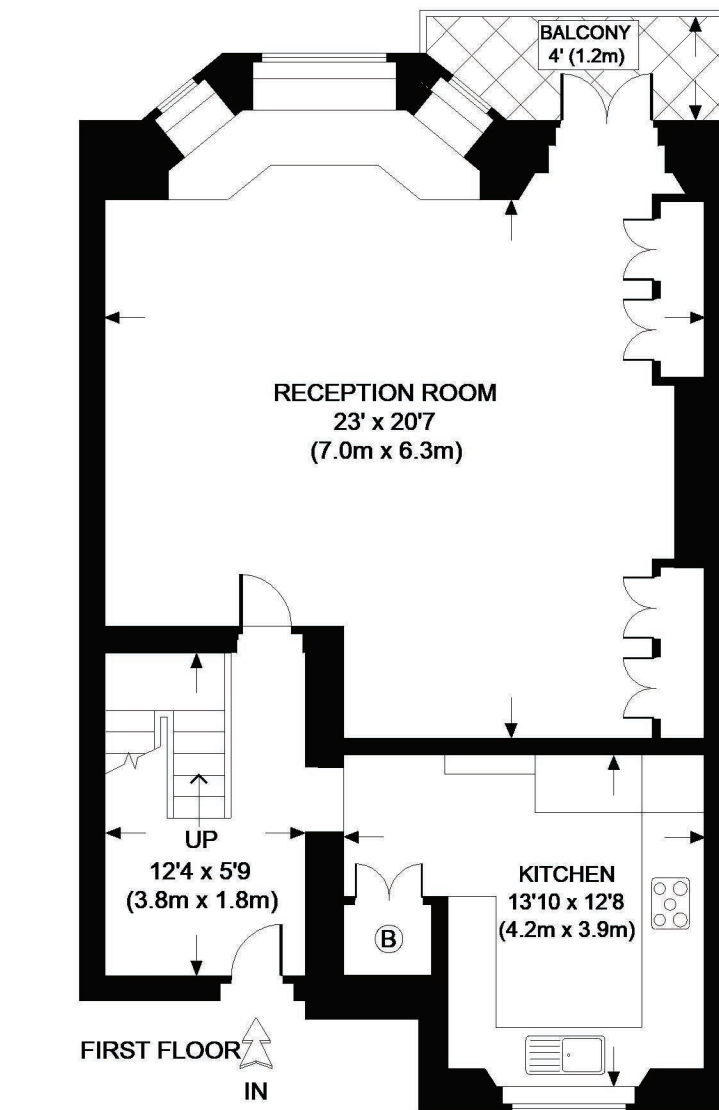
A superb opportunity to rent one of the very rare to the market properties on the first and second floor of a period building on Lennox Gardens. On the first floor is an amazing reception room with superb high ceilings, wood floors, stunning garden view over Lennox Gardens and benefits from air-conditioning and a small front balcony, a modern and contemporary kitchen with Miele integrated appliances. On the second floor is the Principal bedroom with similar view over the communal gardens and en-suite bathroom, two further double bedrooms and a family shower room with ample storage and exceptional natural light.

## Location

Ideally located on the corner of Lennox Gardens and Milner Street with either South Kensington or Knightsbridge underground stations being easily accessed (0.6 miles away for both) and offering easy travel in to London and or Heathrow.



# LENNOX GARDENS



APPROXIMATE GROSS INTERNAL AREA = 1484 SQ.FT. (138 SQ. M.)

This plan is for layout guidance only. Not drawn to scale unless stated. Windows & door openings are approximate. Whilst every care is taken in the preparation of this plan, please check all dimensions, shapes & compass bearings before making any decisions reliant upon it.

## For Clarification

We wish to inform prospective tenants that we have prepared these particulars as a general guide and they have been confirmed as accurate by the landlord. We have not verified permissions, nor carried out a survey, tested the services, appliances and specific fittings. Room sizes are approximate and measurement figures rounded: they are taken between internal wall surfaces and therefore include cupboards/shelves, etc. Accordingly, they should not be relied upon for

carpets and furnishings. It should also be noted that all fixtures and fittings, carpeted, curtains/blinds, kitchen equipment and garden statuary, whether fitted or not, are deemed removable by the landlord unless specifically itemised with these particulars. Please enquire in office or on our website for details on holding deposit and tenancy deposit figures.

