

## Kingswood Road, W4

£625,000

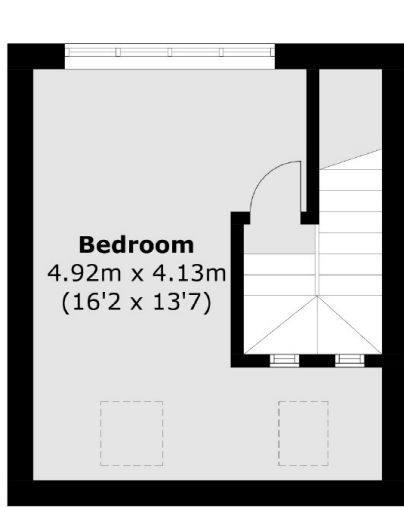
Situated within a charming period property, a spacious and well-presented two bedroom, split-level conversion flat. With long lease and no onward chain.

Kingswood Road is located within half a mile of Chiswick Park (District) and South Acton (Overground) underground stations. The property is also close to local amenities and bus links on Acton Lane and Chiswick High Road. Local schools and green spaces are also close by.

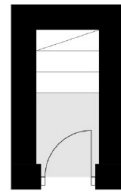
### Features

Split-Level Conversion  
Two Double Bedrooms  
Open-Plan Living  
Close To Transport  
No Onward Chain

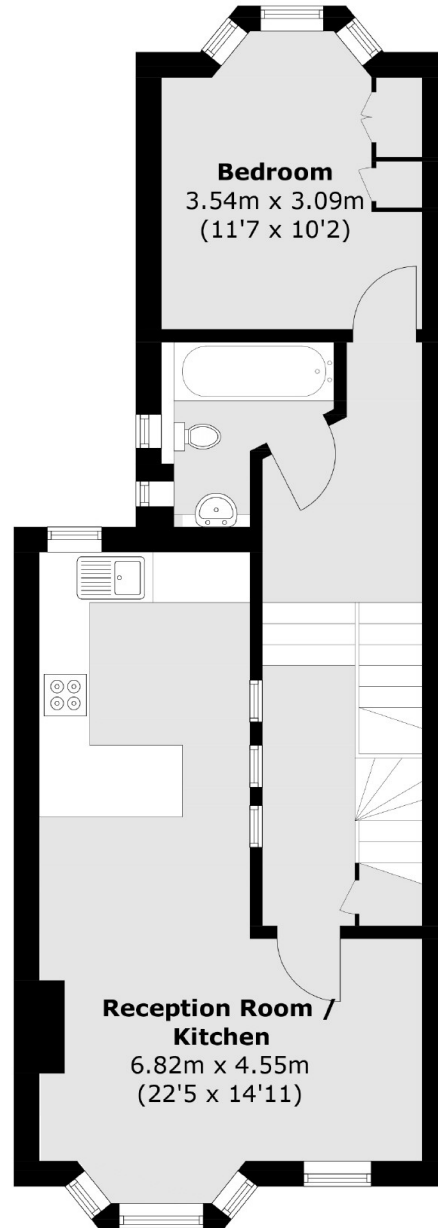
Kingswood Road,  
London, W4



**Second Floor**



**Ground Floor**



**First Floor**

Total area (approx.): 73.6 sq. m (792.2 sq. ft)