



Price

£394,950

Freehold

2x  1x  1x 

The Sands, Ashington,
Pulborough, West
Sussex, RH20

OVER 60?

Secure this property
for up to **59% less!**

cubitt & west
Helping you move forwards



Main features

- Great opportunity to buy an affordable home
- Plenty of potential to update and extend, subject to necessary consents
- Large garden plus garage, driveway and outbuilding
- Lounge with feature log burner
- Realistically priced for a quick sale

Accommodation

GROUND FLOOR

Entrance Hall

Lounge/Dining Room: 14'6 x 11'0 (4.42m x 3.36m)

Kitchen: 12'4 x 8'2 (3.76m x 2.49m)

Rear Lobby: 4'4 x 4'3 (1.32m x 1.30m)

Cloakroom

FIRST FLOOR

Landing

Family Bathroom

Bedroom 1: 12'9 x 11'0 (3.89m x 3.36m)

Bedroom 2: 11'1 x 10'0 (3.38m x 3.05m)

OUTSIDE

Front Garden

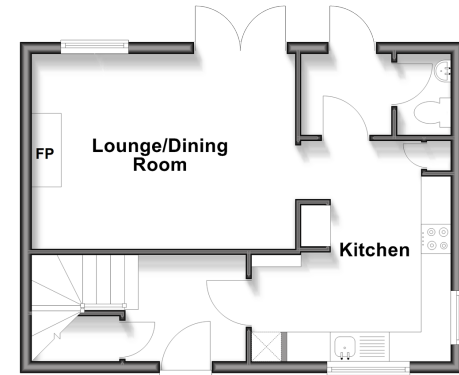
Driveway

Garage

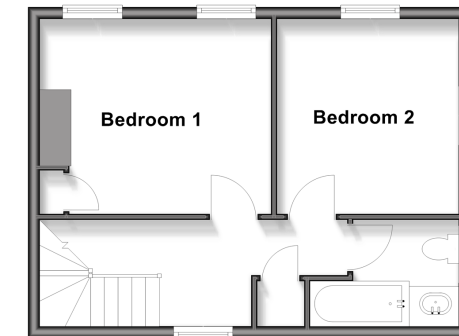
Rear Garden

Summer House

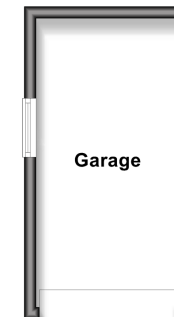
Ground Floor
Approx. 37.1 sq. metres (399.4 sq. feet)



First Floor
Approx. 37.1 sq. metres (399.4 sq. feet)



Outbuilding
Approx. 11.9 sq. metres (128.2 sq. feet)



Call Ashington - 01903 891444 ■ cubittandwest.co.uk

■ Through a Homewise Home For Life Plan people aged 60+ can secure this property for up to 59% less, by purchasing a Lifetime Lease



23603722/20260413/LI/HM1