



## Gleneagle Road, SW16

£300,000

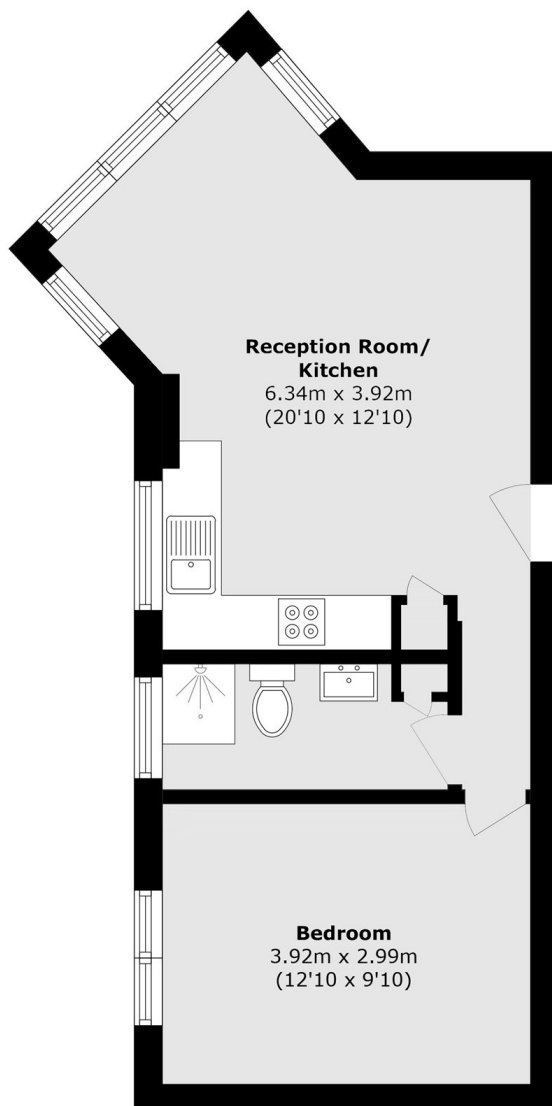
Situated on the upper ground floor of an attractive period conversion, this beautifully presented one-bedroom apartment offers an ideal opportunity for first-time buyers to step onto the property ladder. At its heart is a spacious open-plan kitchen and reception room, flooded in natural light, creating a bright and inviting setting that's perfect for both everyday living and entertaining guests.

Gleneagle Road is a convenient location, close to Streatham High Road with its bars restaurants and shopping. The open spaces of Streatham Common are close by as are mainline train links from Streatham Station and Streatham serving Blackfriars, London Bridge and London Victoria.

### Features

- Close to Station
- Victorian Conversion
- One Double Bedroom
- Open-Plan Living
- Stylish Bathroom/WC
- Sought After Road

# Gleneagle Road, London, SW16



Total area (approx.): 40.9 sq. m (440.2 sq. ft)