



RE/MAX
Prime Estates



Flat 11, Lyttleton House Blackberry Lane, Halesowen, B63 4NX **Offers in the region of £100,000**

Situated in a popular retirement complex, this first-floor apartment offers a safe and comfortable living environment just a short walk from shops, transport links, a doctor's surgery, post box, and chemist.

The well-maintained development features beautiful communal gardens, a residents' lounge with a kitchen, a laundry room, and a secure entry system with lift access to all floors. The apartment itself comprises a hallway, spacious lounge/dining room, fitted kitchen, double bedroom, and modern shower room.

For peace of mind, the property benefits from an on-site Visiting Development Manager and a 24-hour emergency call system. Available to residents aged 60 and over (or 55+ for a second occupant), this is an ideal opportunity for independent yet supported living.

Viewing highly recommended!

Communal Area

The property has the added benefit of a communal seating area, available to all residents to socialise

Entrance Hall

With a door leading from the communal hallway, doors to various rooms

Living Room 17'3" x 10'5" (5.26 x 3.20)



With a door leading from the entrance hall, archway leading to the kitchen, fireplace with decorative surround and hearth, a double glazed window to the front and a wall mounted electric storage heater

Kitchen 5'4" x 7'3" (1.64 x 2.23)



With an archway leading from the living room, a range of wall and base units with worktops, stainless steel sink with mixer tap and drainer, integrated oven with hob and extractor hood above

Bedroom 13'10" x 8'8" (4.24 x 2.65)



With a door leading from the entrance hall, built in wardrobe storage, a double glazed window to the front and a wall mounted electric storage heater

Bathroom 6'7" x 5'5" (2.02 x 1.67)



With a door leading from the entrance hall, full height tile surround, corner shower cubicle with glass shower screen, WC, hand wash basin and an extractor fan

Money Laundering Regulations

At RE/MAX Prime Estates, we adhere to the strict guidelines outlined in the MONEY LAUNDERING REGULATIONS 2017. As per legal requirements, we are obligated to verify the identity of all purchasers and the sources of their funds to facilitate a seamless purchase process. Therefore, all prospective purchasers must furnish the following documentation:

- Satisfactory photographic identification.
- Proof of address/residency.
- Verification of the source of purchase funds.

Please be advised that RE/MAX Prime Estates reserves the right to utilize electronic verification methods to authenticate any required documents. A nominal fee of £60 including VAT per person will be applicable for this service.

Rest assured that these measures are in place to ensure compliance with regulatory standards and to safeguard the integrity of all property transactions.

Referral Fees

At RE/MAX Prime Estates, we are committed to full transparency in all aspects of our service.

As part of our commitment to supporting clients through the property transaction process, we may introduce you to third-party service providers, including conveyancers and mortgage advisers. Where such introductions are made, please note the following:

Conveyancing Referrals:

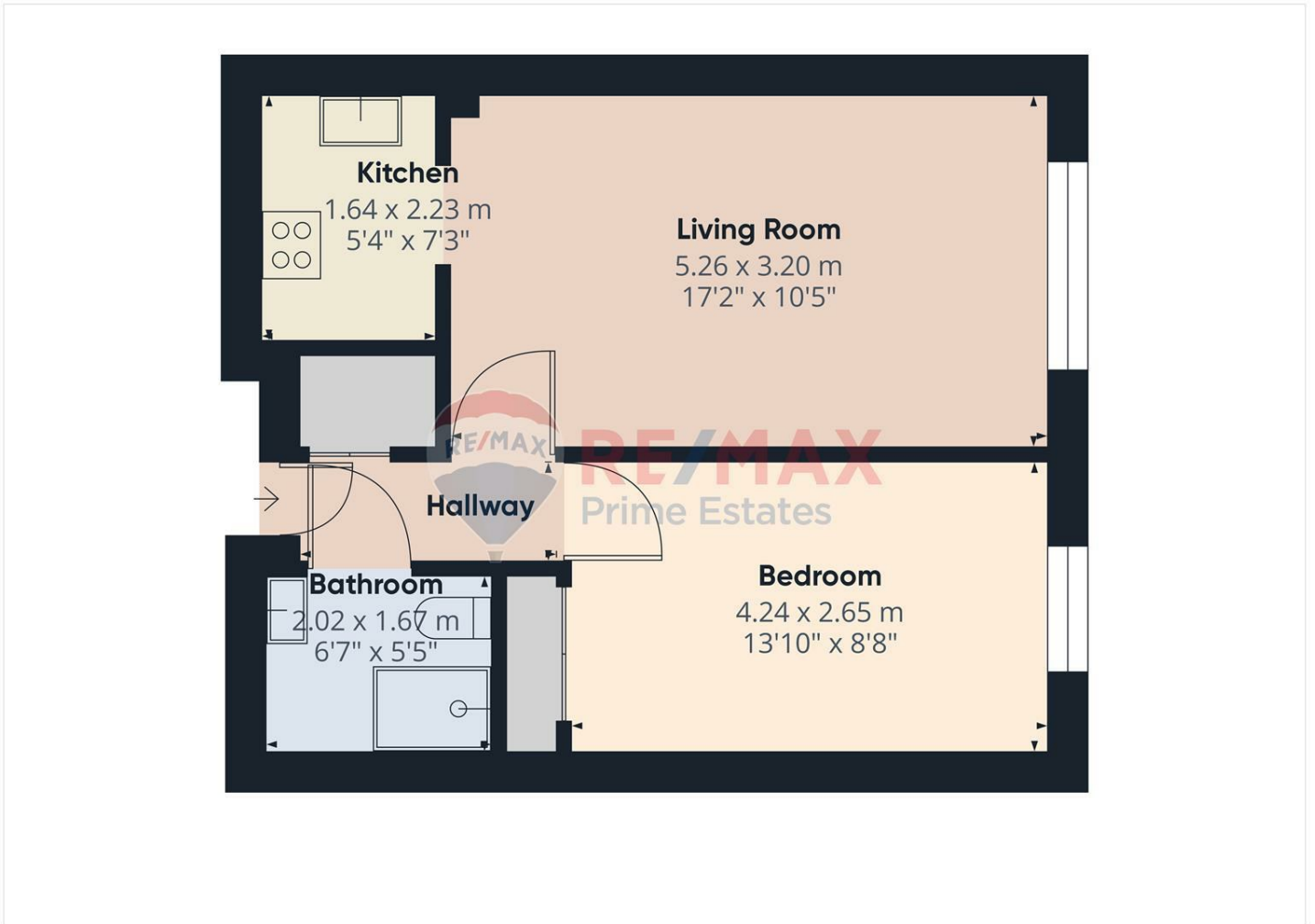
Should you choose to instruct a solicitor or licensed conveyancer introduced by us, please be aware that RE/MAX Prime Estates may receive a referral fee for this introduction. This fee is typically up to £200 and is paid directly to us by the conveyancing firm. This fee is not an additional cost to you and does not affect the quote or service you receive. We only recommend firms we believe offer a high standard of service. You are under no obligation to use any of the professionals we recommend and are free to choose an alternative provider.

Financial Services Referrals:

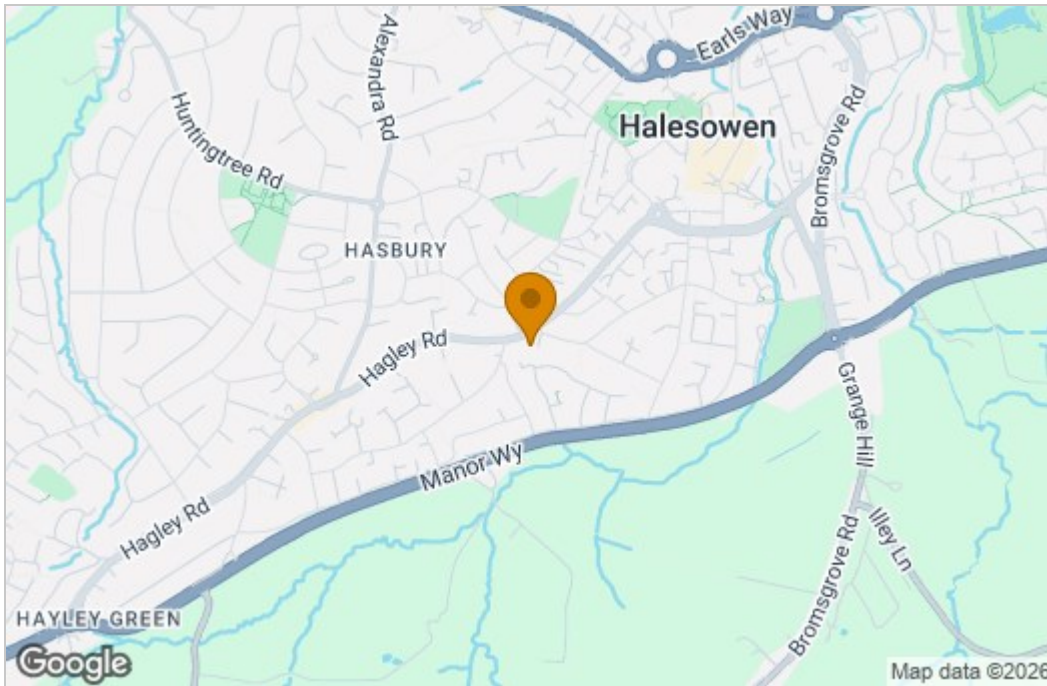
If we introduce you to an independent financial advisory firm, and you proceed with their services, RE/MAX Prime Estates may receive a referral fee averaging £218 per completed case. This referral fee is paid by the financial advisory firm and does not affect the fees or products offered to you. As with all our recommendations, you are under no obligation to proceed with any advisor we introduce.

We are happy to provide further details on referral arrangements upon request.

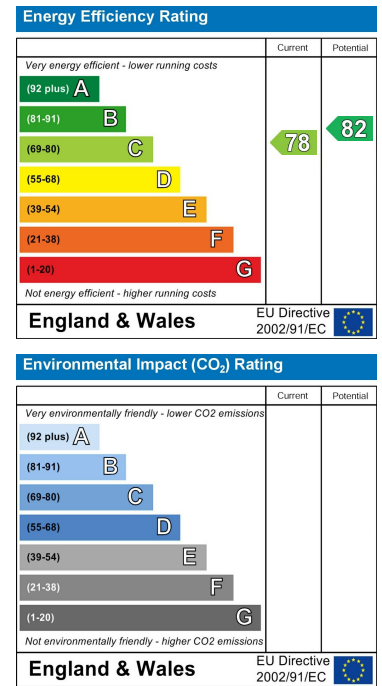
Floor Plan



Area Map



Energy Efficiency Graph



These particulars, whilst believed to be accurate are set out as a general outline only for guidance and do not constitute any part of an offer or contract. Intending purchasers should not rely on them as statements of representation of fact, but must satisfy themselves by inspection or otherwise as to their accuracy. No person in this firm's employment has the authority to make or give any representation or warranty in respect of the property.

Stourbridge, West Midlands, DY8 1DX

Tel: +44 (0) 1384 438457 Email: prime.estates@remax.uk <https://remax.uk/locations/RE-MAX-Prime-Estates>