



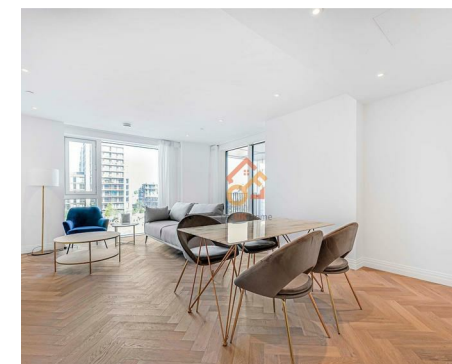
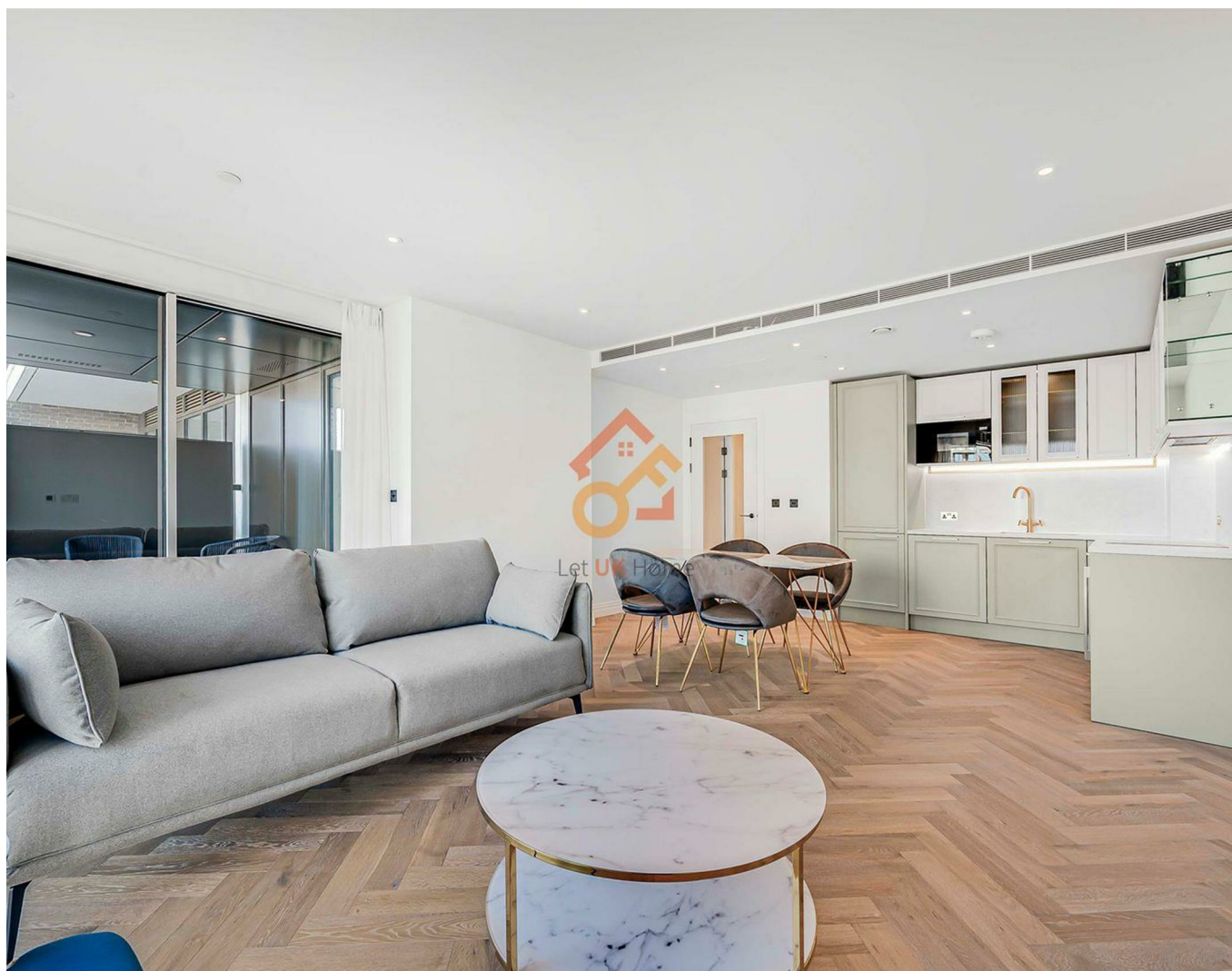
Let **UK** Home

1 Bedrooms

Flat

Located in London

£3,300 Per Month



info@letukhome.co.uk

<https://www.letukhome.co.uk/>

01795 358 886



2 Bridgewater Avenue London

SW6 2FZ



Let UK Home are excited to offer this spectacular one bedroom apartment in the heart of Kings Tower part of the Chelsea creeks.

The flat comprises a spacious open kitchen with a stylishly attached dining area, a magnificent living room leading to a private balcony, one bright bedroom with fitted wardrobes and en-suite, and one family toilet.

Residents of the Kings Tower will have access to the exclusive Halcyon Club featuring private screening rooms and meeting room. Its crowning glory is a 31st floor sky lounge and terrace with enviable views towards the city. Residents will also enjoy access to a fitness centre, swimming pool, and spa with sauna and steam room.

Adjacent to many of London's top schools and higher education institutions, enjoying a prime location. Imperial College London (IC), London School of Economics and Political Science (LSE), University College London (UCL), and King's College London (KCL) are all within short commuting distance.

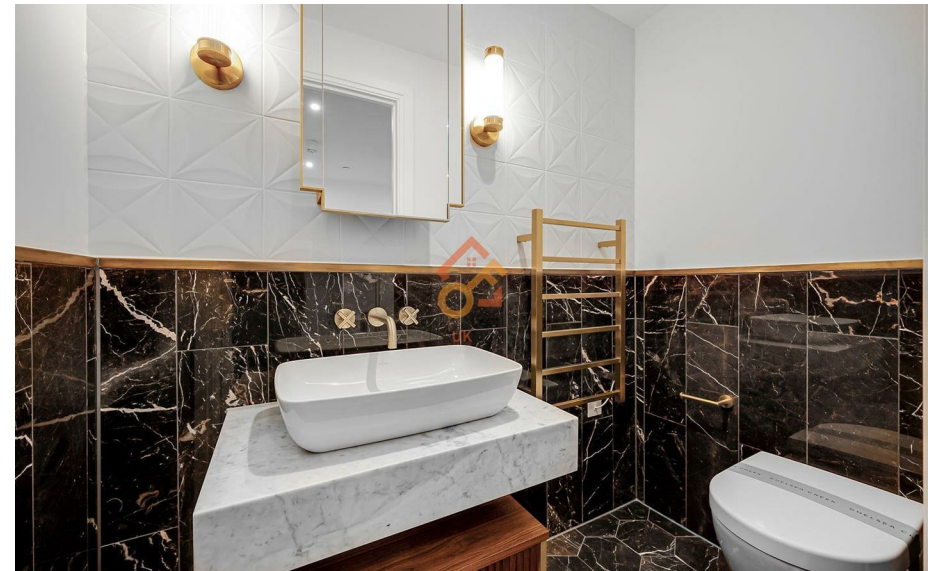
Within walking distance to Imperial Wharf Station for rail and Overground services, where you can conveniently reach West London, the City, Heathrow Airport, and more. Imperial Wharf Station itself is a hub integrating shopping, entertainment, and dining, providing a one-stop experience for local residents. In addition to Imperial Wharf, Fulham Broadway Underground Station is also within walking distance. Beyond rail transport, the surrounding area offers multiple travel options including buses and river buses.

2 Bridgewater Avenue London

£3,300 Per Month



- 3rd Floor
- 24h Security
- The Spa
- Cinema & Game Room
- Residents Lounge
- Concierge Service
- Swimming Pool
- The Gym
- Sauna & Steam Room
- EPC Rating: B





View towards King's Road Park



| | | |
|---------------------|---------------|-----------------|
| TOTAL INTERNAL AREA | 63.67 SQ M | 685 SQ FT |
| LIVING / DINING | 4.63M X 4.35M | 15' 2" X 14' 3" |
| KITCHEN | 2.67M X 2.45M | 8' 9" X 8' 1" |
| BEDROOM | 3.25M X 3.37M | 10' 8" X 11' 1" |
| BALCONY | 10.08 SQ M | 108 SQ FT |



Let **UK** Home

3F 2 Eastbourne Terrace
Paddington
London
W2 6LG

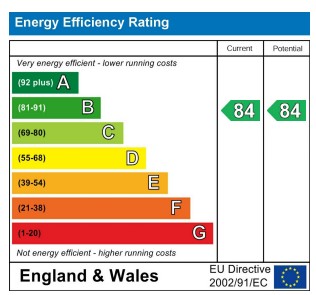
01795 358 886

info@letukhome.co.uk

Council Tax Band: F

Local Authority:

Agents Note: Whilst every care has been taken to prepare these particulars, they are for guidance purposes only. All measurements are approximate and are for general guidance purposes only and whilst every care has been taken to ensure their accuracy, they should not be relied upon and potential buyers/tenants are advised to recheck the measurements.



<https://www.letukhome.co.uk/>