



High Street, Castor Peterborough
£800,000 **Freehold**

**QUENTIN
MARKS**



Key Features



- Detached Family Home
- 4 Double Bedrooms
- 2 Bathrooms
- Large Plot
- 3 Reception Rooms

This non-estate detached residence is located in the highly sought after village of Castor and occupies a generous plot featuring a mature, south-facing rear garden.

While the property would benefit from updating and reconfiguring, it presents an outstanding opportunity for redevelopment and extension (subject to the necessary planning consents), offering the potential to create a superb family home.

The ground floor provides three spacious reception rooms. The principal living room is particularly appealing, featuring an open fireplace and dual aspect outlook, with windows to both the front and rear, as well as direct access to the garden. There is also a substantial study / family room and



a well-proportioned dining room.

The kitchen is complemented by a utility area, which includes a walk-in pantry and additional storage cupboard, and provides internal access to the double garage. A ground floor bathroom with a three-piece suite completes the downstairs accommodation.

Upstairs, the property offers four well sized bedrooms. Three of the principal bedrooms enjoy views over the rear garden, while the fourth bedroom faces the front. The family bathroom is fitted with a five-piece suite.

Additional benefits include gas-fired central heating.

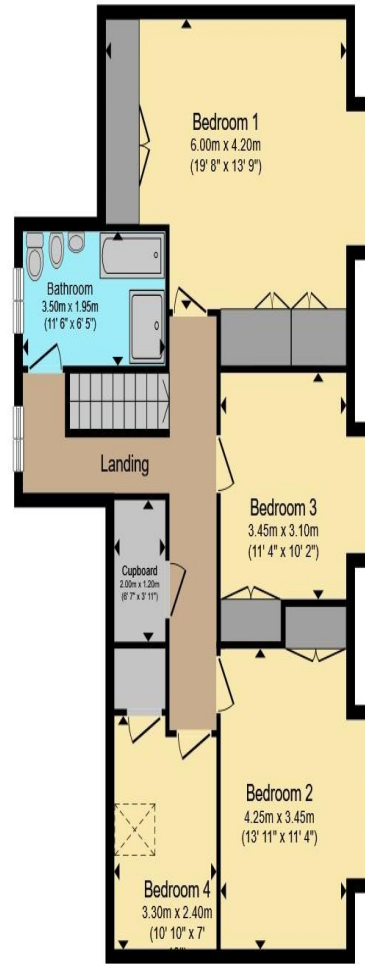
Externally, the front of the property features a driveway accessed via a five-bar gate, providing ample off-road parking and access to the double garage. The rear garden is a particular highlight being south-facing and thoughtfully landscaped, it includes a patio area with a pond, alongside a variety of mature trees set within the lawn.

The property is offered for sale with no onward chain, and early viewing is highly recommended.





Ground Floor



First Floor

Total floor area 232.8 sq.m. (2,506 sq.ft.) approx

This floor plan is for illustrative purposes only. It is not drawn to scale. Any measurements, floor areas (including any total floor area), openings and orientation are approximate. No details are guaranteed, they cannot be relied upon for any purpose and they do not form part of any agreement. No liability is taken for any error, omission or misstatement. A party must rely upon its own inspection(s). Powered by [wwwPropertyBox.io](http://www.PropertyBox.io)



To view this property call Quentin Marks on:
01778 391600

Selling your property?

Contact us to arrange a **FREE** home valuation.

 01778 391600

 2 West Street, Bourne, Lincs, PE10 9NE

 sales@quentinmarks.co.uk

 www.quentinmarks.co.uk



SCAN FOR MORE
INFORMATION



Sharman Quinney Holdings Limited is registered in England and Wales under company number 4174227, Registered Office is Cumbria House, 16-20 Hockliffe Street, Leighton Buzzard, Bedfordshire, LU7 1GN. VAT Registration Number is 500 2481 05.

1: These particulars do not constitute part or all of an offer or contract. 2: The measurements indicated are supplied for guidance only and as such must be considered incorrect. 3: Potential buyers are advised to recheck the measurements before committing to any expense. 4: Sharman Quinney has not tested any apparatus, equipment, fixtures, fittings or services and it is the buyers interests to check the working condition of any appliances. 5: Sharman Quinney has not sought to verify the legal title of the property and buyers must obtain verification from their legal representative. 6: Intending purchasers will be asked to produce identification documentation at a later stage and we would ask your co-operation in order that there will be no delay in agreeing the sale. Ref: SQB100649 - 0001

