

84 Northfield Avenue, London, W13 9RR

020 8840 5151



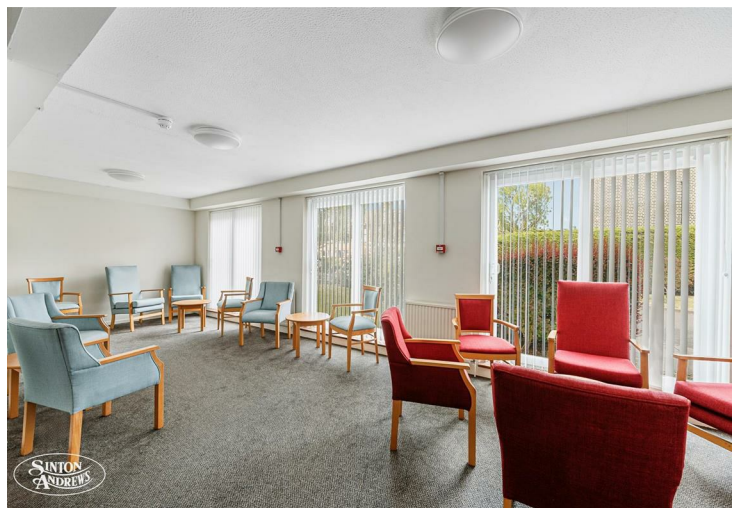
Leasehold / Apartment

Northcroft Road

£225,000

A bright and airy one bedroom retirement apartment for the over 55's in this central Northfields location.

- Retirement apartment for over 55's
- Close to local shops and transport links
- Lift service
- Residents parking
- Communal gardens
- Laundry room



Leasehold / Apartment

Northcroft Road, W13 9TA

£225,000

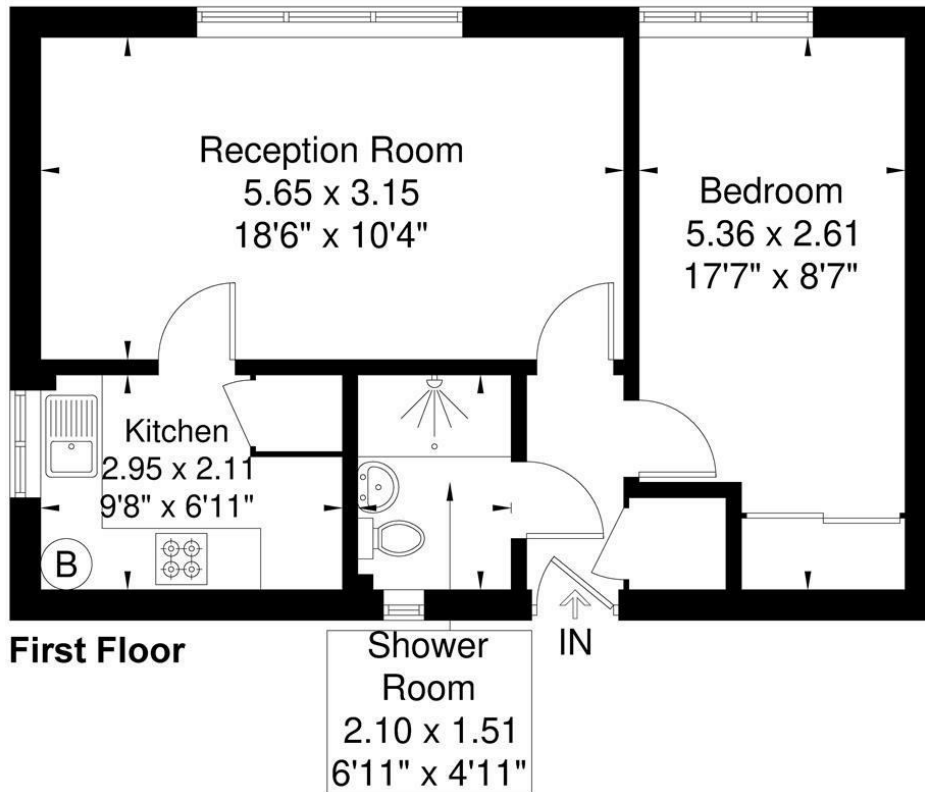
This bright and spacious first floor apartment offers a good size living room, a double bedroom, a fitted kitchen, and a shower room. The property also includes gas central heating and double glazing throughout. The complex benefits from a communal lounge and laundry room, lift service, warden service, communal gardens, and off-street parking. This apartment is offered chain-free.

Northcroft Road is a short walk to the local shops, café bars, and restaurants on Northfield Avenue, along with the Piccadilly Line tube station and excellent bus services. Walpole, Lammas, and Blondin Parks are also close by.



Mayo Court

Approximate Gross Internal Area = 46.6 sq m / 501 sq ft



Although every attempt has been made to ensure accuracy, all measurements are approximate.
The floorplan is for illustrative purposes only and not to scale.
© www.perspective.co.uk

Energy Performance Graph

Energy Efficiency Rating		Current	Potential
Very energy efficient - lower running costs			
(92 plus) A			
(81-91) B			
(69-80) C		80	80
(55-68) D			
(39-54) E			
(21-38) F			
(1-20) G			
Not energy efficient - higher running costs			
England & Wales	EU Directive 2002/91/EC		

Call us on

020 8840 5151

northfieldsales@sintonandrews.co.uk

www.sintonandrews.co.uk

Agents Note: Whilst every care has been taken to prepare these particulars, they are for guidance purposes only. All measurements are approximate and are for general guidance purposes only and whilst every care has been taken to ensure their accuracy, they should not be relied upon and potential buyers are advised to recheck the measurements.