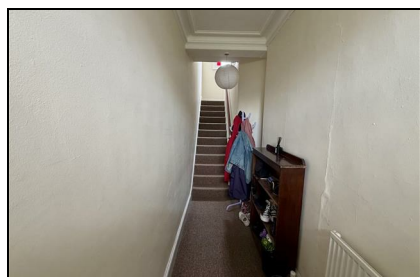


Whitstable Road
Canterbury
CT2 8EB

£1,300 Per Month

Finn's
82 Castle Street
Canterbury
CT1 2QD
t: 01227 452111
e: canterbury@finns.co.uk
www.finns.co.uk



A spacious three-bedroom maisonette flat forming part of an attractive Victorian terraced house in Canterbury. Arranged over two floors, the property offers generously proportioned rooms throughout, making it well suited to tenants looking for comfortable and flexible living space close to the city's amenities.

The accommodation comprises three bedrooms, a bathroom, and spacious living areas set within a characterful period building. The split-level layout provides a practical sense of separation between living and sleeping space, while the property's Canterbury location offers convenient access to local shops, transport links, schools, universities, and the historic city centre.

- Three-bedroom maisonette flat
- Set over two floors
- Part of a Victorian terraced house
- Spacious rooms throughout
- One bathroom
- Convenient Canterbury location
- Available from 1st August
- Rent: £1,300 per calendar month
- EPC Band C Council Tax Band B
- Deposit £1500.00



Energy Efficiency Rating		
	Current	Potential
Very energy efficient - lower running costs		
(92 plus) A		
(81-91) B		
(69-80) C	74	80
(55-68) D		
(39-54) E		
(21-38) F		
(1-20) G		
Not energy efficient - higher running costs		
England & Wales	EU Directive 2002/91/EC	

Viewing: By appointment through Finn's, Canterbury
Telephone: 01227 452111

Council Tax: B

Date: These particulars were prepared on: 10th July 2026

Agent's Note: Wherever appliances or services, fixtures or fittings have been mentioned in these particulars they have not been tested by us. Measurements should not be relied upon. Unless specifically referred to above all fitted carpets, curtains, fixtures and fittings and garden outbuildings and ornaments are excluded from the sale. None of the statements in these particulars are to be relied upon as statements or representatives of fact. Photographs are for guidance only and do not imply items shown are included in the sale - some aspects may have changed since they were taken. No person in the employment of Finn's has authority to give any representation or warranty in relation to this property.

FINN'S CANTERBURY
82 Castle Street
Canterbury
Kent CT1 2QD
Lettings: 01227 452111

FINN'S SANDWICH
2 Market Street
Sandwich
Kent CT13 9DA
Lettings: 01304 614471

FINN'S ST NICHOLAS AT WADE
The Packhouse
Wantsum Way
St Nicholas at Wade
Kent CT7 0NE
01843 848320

