







14 Hoylake Avenue

Chesterfield • Derbyshire • S40 3NQ

£270,000

GUIDE PRICE - £270,000 to £280,000 This well-presented two-bedroom detached bungalow is offered with no onward chain and provides comfortable single-storey living, making it ideal for couples, downsizers, or buyers seeking a practical home with scope to personalise. Tucked away on a quiet cul-de-sac, the property enjoys a convenient location close to local shops and amenities, while being just a short drive from Chesterfield town centre. To the side of the property is a useful entrance porch, perfect for storage and with space to house a tumble dryer. From here, the hallway leads into the home. To the left is a fitted kitchen with storage cupboards and space for freestanding appliances. Further along the hallway is the spacious L-shaped lounge and dining area, a bright and welcoming room with two front-facing windows that create a light-filled living space. The accommodation also includes a modern three-piece bathroom with shower over bath, WC, and sink, as well as a handy storage cupboard in the hallway. To the right are the bedrooms: the principal bedroom is a generous double with fitted wardrobes and a rear-facing window overlooking the garden, while bedroom two is a smaller double, also with fitted wardrobes, and sliding patio doors opening directly onto the garden. Externally, the property offers a lawned front garden and a tarmacked driveway to the side, providing off-road parking and leading to a detached garage. To the rear, a concrete slatted seating area steps down to a large lawned garden which





- Two Bedroom Detached Bungalow
- Offered With No Onward Chain
- Off Road Parking & Detached Garage
- L Shaped Lounge-Diner
- Three Piece Bathroom
- Large Private Rear Garden
- Kitchen w/ Fitted Storage Cupboards
- Popular Location Close To Shops & Amenities
- Tenure: Freehold
- EPC Rating: D/ Council Tax Band C





14 HOYLAKE AVENUE

APPROXIMATE GROSS INTERNAL AREA = 64.7 SQ M / 696.6 SQ FT

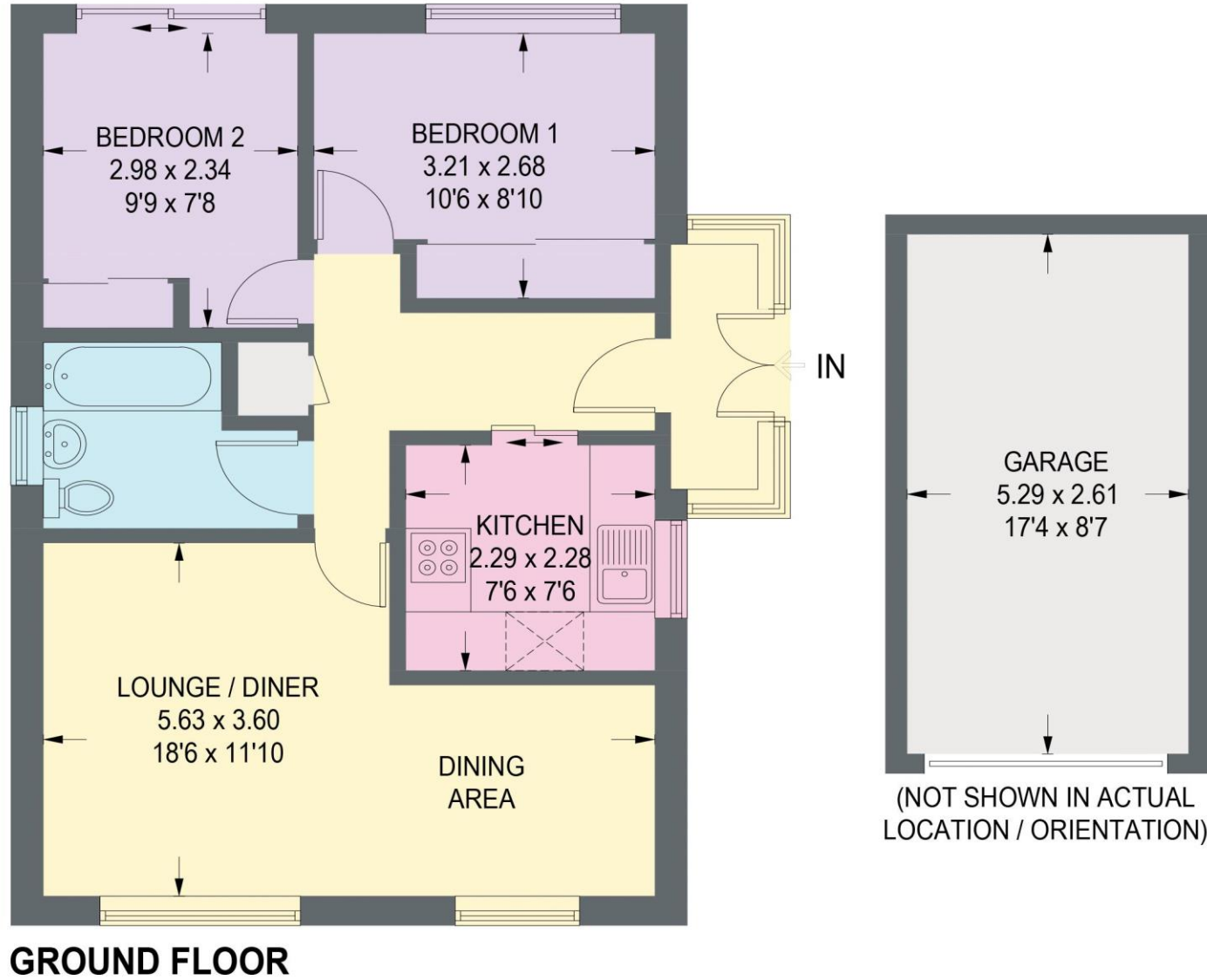


Illustration for identification purposes only, measurements are approximate, not to scale. (ID1259007)

