



**Cleveland Street, W1T**

£1,890,000

**Dexters**



## Cleveland Street, W1T

A first floor apartment located at 101 Cleveland Street, a modern development with residents lounge, garden, spa and gymnasium. Two double bedrooms, two bathrooms and a balcony overlooking residents gardens.

The apartment occupies a corner position within the building and enjoys a bright aspect. Internally there is a fully fitted Italian designed kitchen with Miele fitted appliances, Oak engineer timber chevron flooring with under floor heating and comfort cooling.

Located south of Regents Park. Accessible to the range of restaurants, world-class amenities and retail of London's West End. Fitzrovia and Marylebone are accessible on foot.

### Features

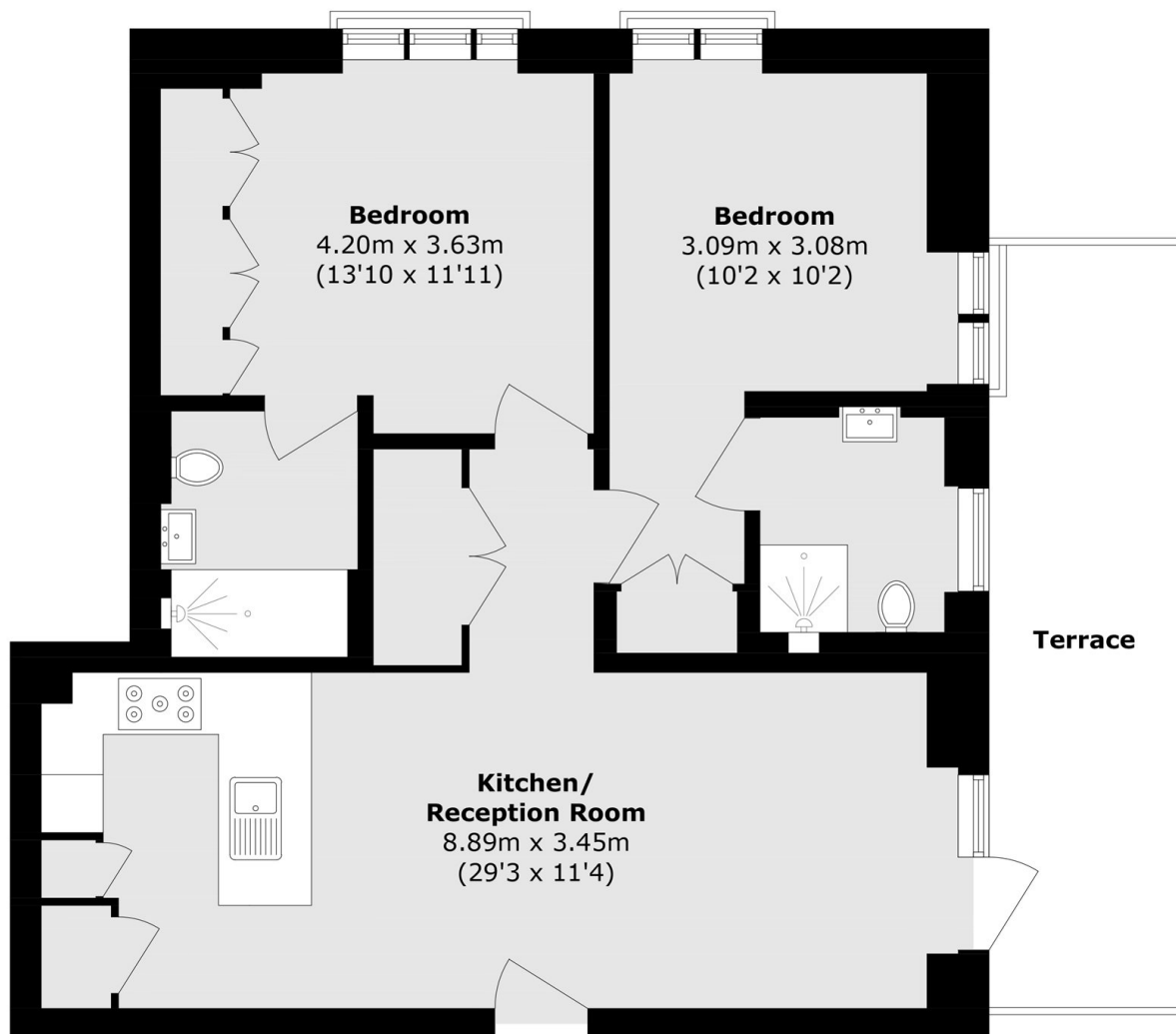
- Two Double Bedrooms
- Two Bathrooms
- Two Lifts & 24 Hr Concierge
- 250 Year Leasehold
- Balcony
- Overlooks Gardens







# Cleveland Street, LONDON, W1T



## First Floor

Total area (approx.): 75.1 sq. m (808.4 sq. ft)

Terrace (approx.): 13.8 sq. m (148.5 sq. ft)