



ROBSON AVENUE, NW10

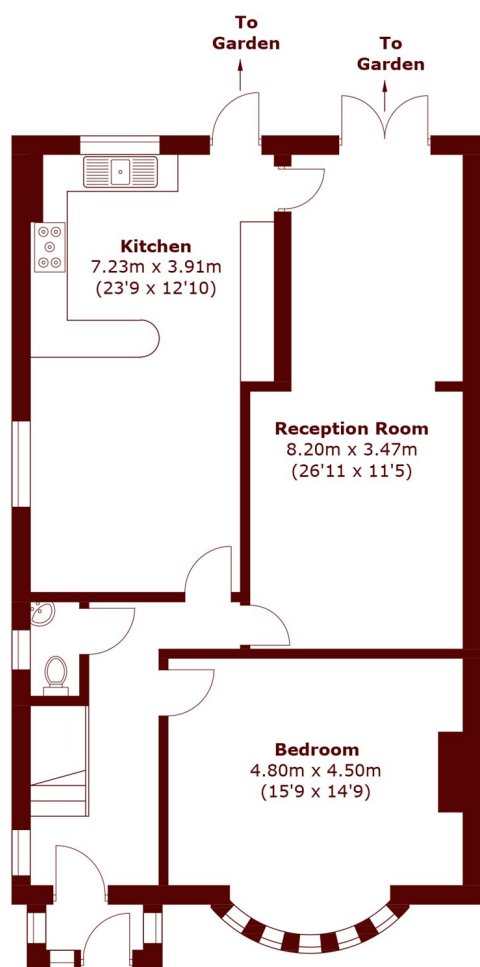
£1,200,000

This renovated Edwardian Semi-detached Four Bedroom house is set over 2 levels. Offering a generous. This property has 4 double bedrooms, a Large paved garden. In addition to the large driveway is a garage the

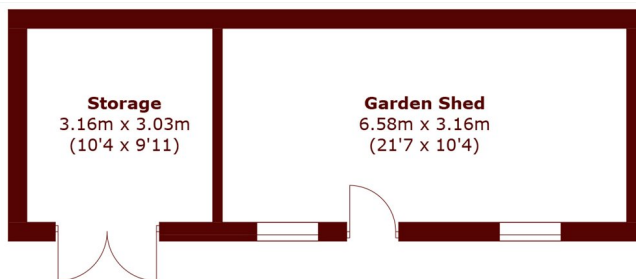
Edwardian Home
Four Bedrooms
Semi-Detached

Off-Street Parking
Large Garden
Freehold

STEP INSIDE ROBSON AVENUE

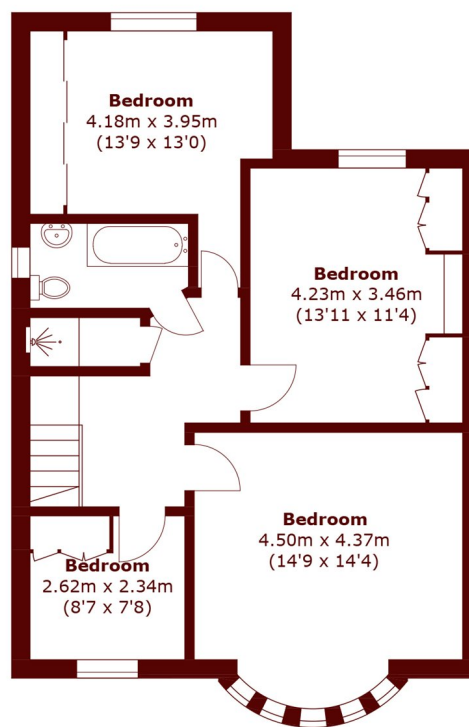


Ground Floor



Outbuilding

(Not Shown In Actual Location / Orientation)



First Floor

Total area (approx.): 154.2 sq. m (1659.7 sq. ft)
Outbuilding: 31.2 sq. m (336 sq. ft)

Willesden Green
020 8451 0420

Energy Rating: D We aim to make our particulars both accurate and reliable. However, they are not guaranteed; nor do they form part of an offer or contract. If you require clarification on any points then please contact us, especially if you're traveling some distance to view. Please note that appliances and heating systems have not been tested and therefore no warranties can be given as to their good working order

**MARSH &
PARSONS**