



## Argosy Way, £120,000

- NO CHAIN
- Top floor
- Brilliant views
- Close to amenities
- Council tax band B
- EPC Rating: C



01633 221892  
newport@peteralan.co.uk





## About the property

This beautifully presented top floor, two-bedroom flat offers an exceptional opportunity to enjoy modern living with truly stunning views. Positioned to maximise natural light and outlook, the property boasts far-reaching views that can be enjoyed from the main living space, creating a bright and uplifting atmosphere throughout.

At the heart of the home is a spacious open-plan kitchen, dining and living area, designed with both comfort and functionality in mind. The layout is ideal for modern lifestyles, whether entertaining guests or enjoying quiet evenings at home. The kitchen is thoughtfully arranged with ample storage and worktop space, flowing seamlessly into the dining and living areas to create a sociable and versatile environment.

The flat features two well-proportioned bedrooms, each offering a calm and comfortable retreat. The accommodation is complemented by a well-appointed bathroom, finished to a practical and contemporary standard.

Additional benefits include communal parking, providing convenience for residents and visitors alike. The property is energy efficient with an EPC rating of C, helping to keep running costs lower, and falls within Council Tax Band B, making it an attractive option for first-time buyers, professionals, or investors.

Situated on the top floor, the flat enjoys a sense of privacy and elevation, enhancing both the views and overall appeal. Viewing is recommended.





## Accommodation

### Lounge

18' 3" x 10' ( 5.56m x 3.05m )

### Kitchen

18' 6" x 5' ( 5.64m x 1.52m )

### Bedroom One

9' 4" max x 9' 3" max ( 2.84m max x 2.82m max )

### Bedroom Two

11' 7" max x 9' 2" max ( 3.53m max x 2.79m max )

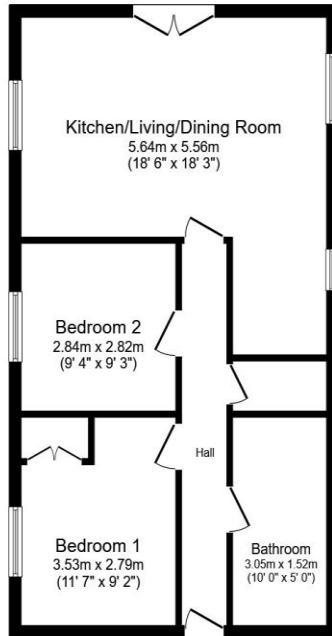
### Bathroom

10' max x 5' max ( 3.05m max x 1.52m max )

01633 221892

newport@peteralan.co.uk

## Floorplan



Floor Plan

Floor area 57.3 sq.m. (617 sq.ft.)

Total floor area: 57.3 sq.m. (617 sq.ft.)

This floor plan is for illustrative purposes only. It is not drawn to scale. Any measurements, floor areas (including any total floor area), openings and orientations are approximate. No details are guaranteed, they cannot be relied upon for any purpose and do not form any part of any agreement. No liability is taken for any error, omission or misstatement. A party must rely upon its own inspection(s). Powered by [www.Propertybox.io](http://www.Propertybox.io)

## Important Information

Note while we endeavour to make our sales details accurate and reliable, if there is any point which is of particular interest to you, please contact the office and we will be pleased to confirm the position for you. We have not personally tested any apparatus, equipment, fixtures, fittings or services and cannot verify they are in working order or fit for their purposes. Nothing in these particulars is intended to indicate that carpets or curtains, furnishings or fittings, electrical goods (whether wired or not). Gas fires or light fittings or any other fixtures not expressly included form part of the property offered for sale. This computer generated Floorplan, if applicable, is intended as a general guide to the layout and design of the property. It is not to scale and should not be relied upon for dimensions. Tenure: We cannot confirm the tenure of the property as we have not had access to the legal documents. The buyer is advised to obtain verification from their solicitor or surveyor.

Peter Alan Limited is registered in England and Wales under company number 2073153, Registered Office is Cumbria House, 16-20 Hockliffe Street, Leighton Buzzard, Bedfordshire, LU7 1GN. VAT Registration Number is 500 2481 05. For activities relating to regulated mortgages and non-investment insurance contracts, Peter Alan Limited is an appointed representative of Connells Limited which is authorised and regulated by the Financial Conduct Authority. Connells Limited's Financial Services Register number is 302221. Most buy-to-let

**pa** peter  
alan