



Guide Price
£300,000

Freehold

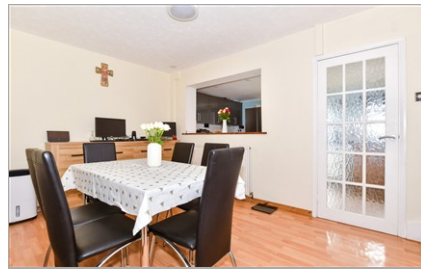
3x  1x  2x 

**Beaumont Road,
Maidstone, Kent ME16**

OVER 60?

Secure this property
for up to **59% less!**

Wards
Helping you move forwards



Main features

- **Extended family house**
- **Double glazing and central heating**
- **Off road parking to front**
- **Spacious rear garden with useful workshop**
- **Easy access to local amenities**

Accommodation

GROUND FLOOR

Porch

Lounge: 15'7 x 11'4 (4.75m x 3.46m)

Dining Room: 12'9 x 8'10 (3.89m x 2.69m)

Kitchen: 15'8 x 8'1 (4.78m x 2.47m)

FIRST FLOOR

Landing

Bedroom 1: 11'1 x 6'3 (3.38m x 1.91m)

Bedroom 2: 9'4 x 7'0 (2.85m x 2.14m)

Bedroom 3: 7'9 x 7'4 (2.36m x 2.24m)

Bathroom

OUTBUILDING

Workshop: 10'5 x 8'4 (3.18m x 2.54m)

OUTSIDE

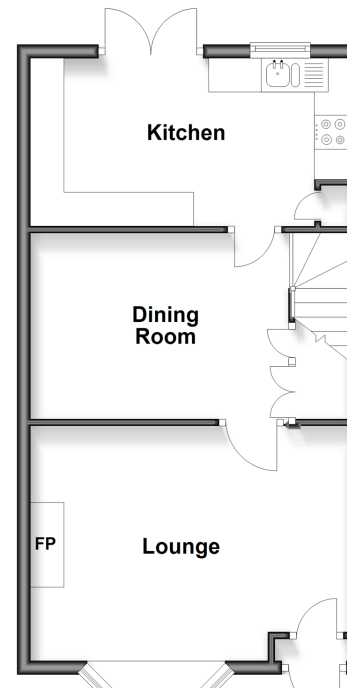
Rear Garden

Front Garden

Off Road Parking

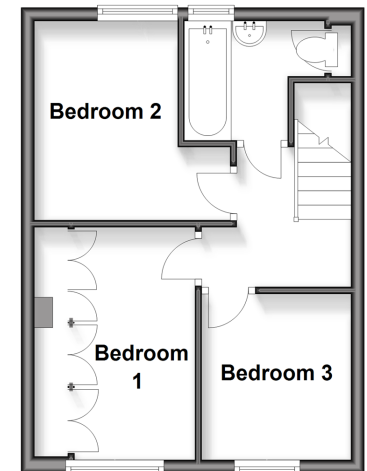
Ground Floor

Approx. 42.6 sq. metres (458.7 sq. feet)



First Floor

Approx. 30.7 sq. metres (330.3 sq. feet)



Call Maidstone - 01622 683737 ■ wardsof Kent.co.uk

■ Through a Homewise Home For Life Plan people aged 60+ can secure this property for up to 59% less, by purchasing a Lifetime Lease



13159410/20260414/CMC/DS