



Guide Price
£385,000

Freehold

3x  1x  2x 

**Wemmick Close,
Rochester, Kent, ME1**

OVER 60?

Secure this property
for up to **59% less!**

Wards
Helping you move forwards



Main features

- Quiet cul-de-sac position in a sought after location
- Catchment area for top performing schools
- Garage and off-road parking
- No forward chain
- Excellent motorway connections

Accommodation

GROUND FLOOR

Hallway

Dining Room: 13'7 x 10'10 (4.14m x 3.30m)

Lounge: 12'6 x 11'2 (3.81m x 3.41m)

Kitchen: 10'6 x 7'10 (3.20m x 2.39m)

FIRST FLOOR

Landing

Bedroom 1: 14'1 x 9'2 (4.30m x 2.80m)

Bedroom 2: 13'1 x 8'2 (3.99m x 2.49m)

Bedroom 3: 13'1 x 7'7 (3.99m x 2.31m)

Bathroom: 8'9 x 5'4 (2.67m x 1.63m)

OUTSIDE

Garage

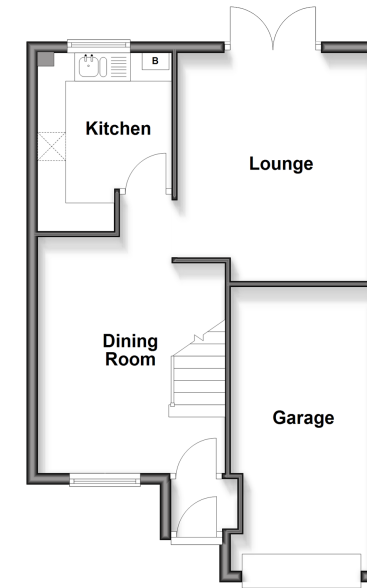
Off-Road Parking

Rear Garden

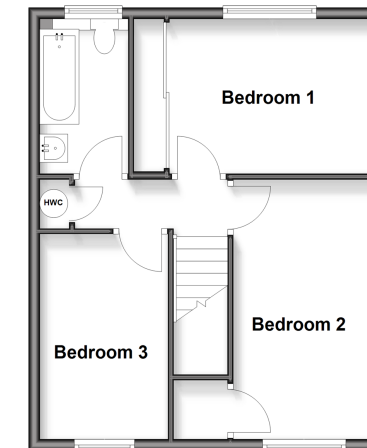
Call Rochester - 01634 830925 ■ wardsof Kent.co.uk

- Legal advice should be taken to verify fixtures/fittings, planning, alterations and/or lease details
- Appliances & services are untested, dimensions are approximate and floor plans are not to scale
- Through a Homewise Home For Life Plan people aged 60+ can secure this property for up to 50% less, by purchasing a Lifetime Lease

Ground Floor
Approx. 49.4 sq. metres (531.8 sq. feet)



First Floor
Approx. 44.1 sq. metres (474.4 sq. feet)



11530258/20251215/DG/AB