

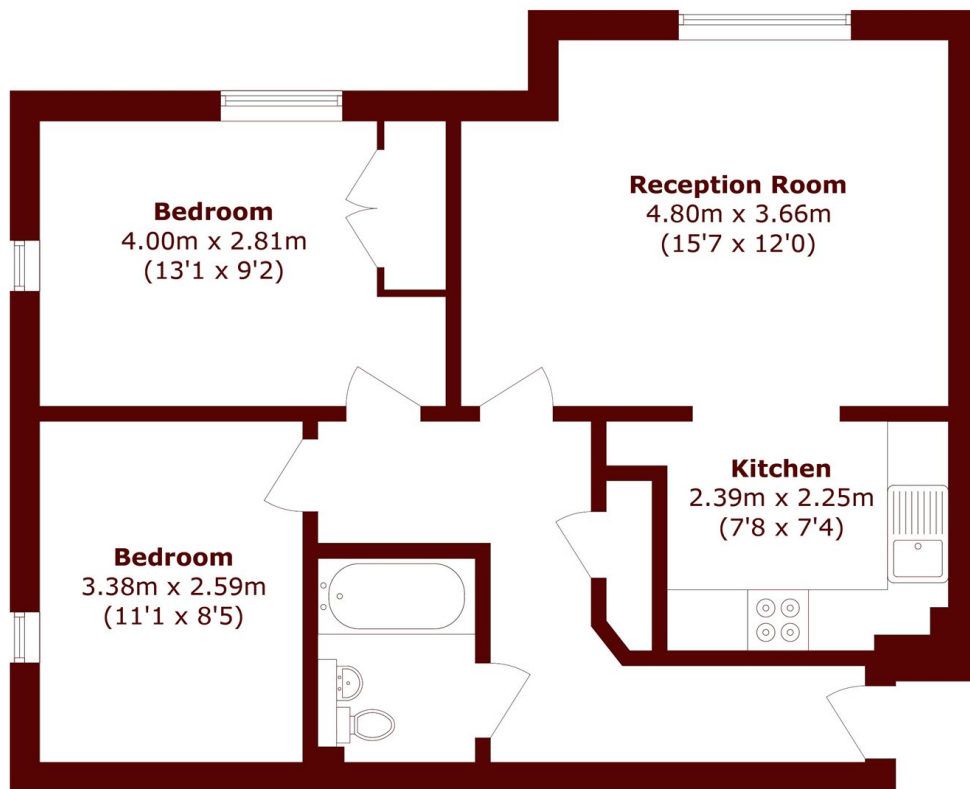


Strand Drive, TW9

£2,350 pcm



- Two Bedrooms
- Semi Open Plan
- Allocated Parking
- Purpose Built
- Private Development
- Riverside



Total area (approx.): 58.7 sq. m (631.8 sq. ft)

Marsh & Parsons Chiswick

34-38 Turnham Green
Terrace, London, W4 1QP
020 8994 2556