

## Conway Street, W1T

£800 Per week

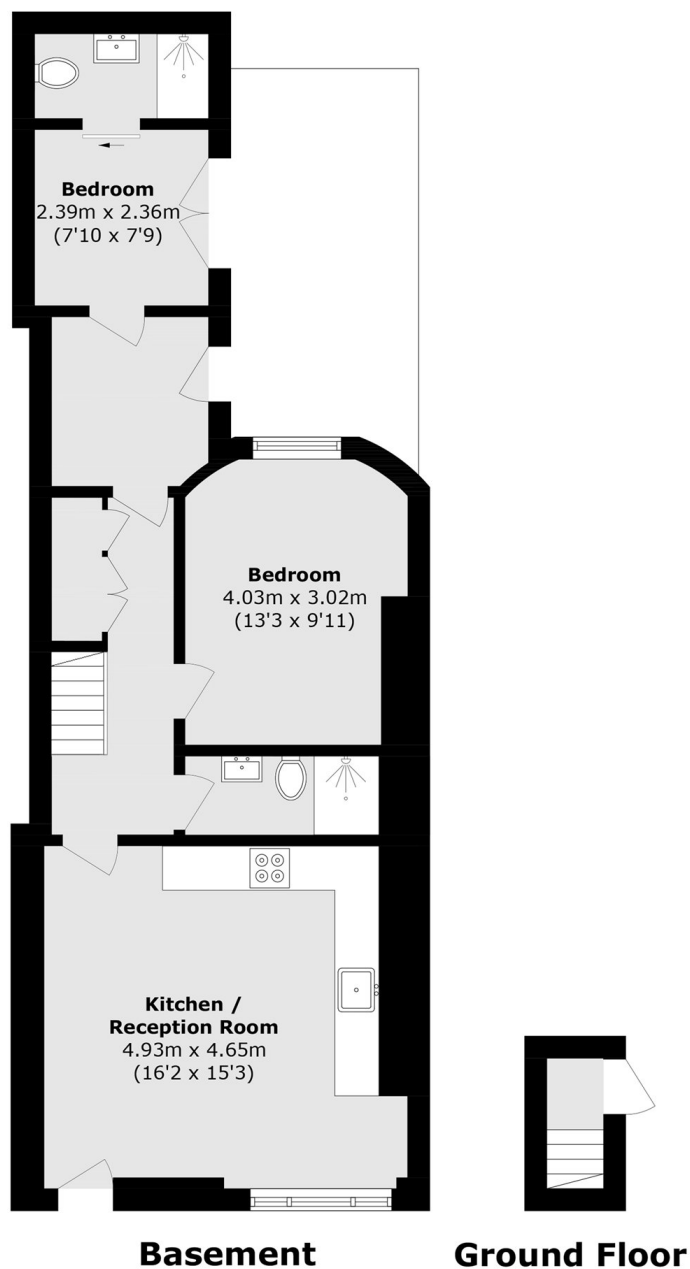
This two bedroom, two bathroom naturally lit property is conveniently located in the heart of Fitzrovia. The property offers an open plan kitchen/reception area with wooden flooring throughout the apartment.

Close proximity to Great Portland Street and Regent's Park train stations. Just moments away from Regent's Park and Fitzroy Square Gardens.

### Features

- Central Location
- Newly Refurbished
- Exceptionally Bright
- Wooden Floors
- Open Plan
- Modern

# Conway Street, London, W1T



Total area (approx.): 62.6 sq. m (673.8 sq. ft)