



COMPTON AVENUE,
LILLIPUT











DETAILS

An exceptional top-floor penthouse apartment enjoying refined coastal living and panoramic views across Parkstone Golf Course, positioned within the prestigious Dornoch development.

Occupying a prime position within the development, this immaculately presented two double bedroom residence combines contemporary design with elegant proportions, accessed via a secure communal entrance with lift access directly to both the apartment and underground parking. A private lobby opens into a welcoming reception hall, complete with generous storage, video entry system, and guest cloakroom.

The fantastic open plan kitchen/lifestyle room offers a practical and social space perfect for entertaining, dining and cooking. The contemporary kitchen is comprehensively fitted with integrated appliances and a breakfast bar.

The principal suite features a beautifully appointed en-suite bathroom and dressing area, while the second double bedroom also benefits from a luxury en-suite shower room. Further highlights include underfloor heating, exceptional storage, and high-quality finishes throughout.

Externally, the development is set within beautifully maintained communal grounds and benefits from allocated underground parking for two vehicles, additional visitor parking, and a private storage room. Offered to the market with no forward chain, this is a rare opportunity in a prime coastal setting.

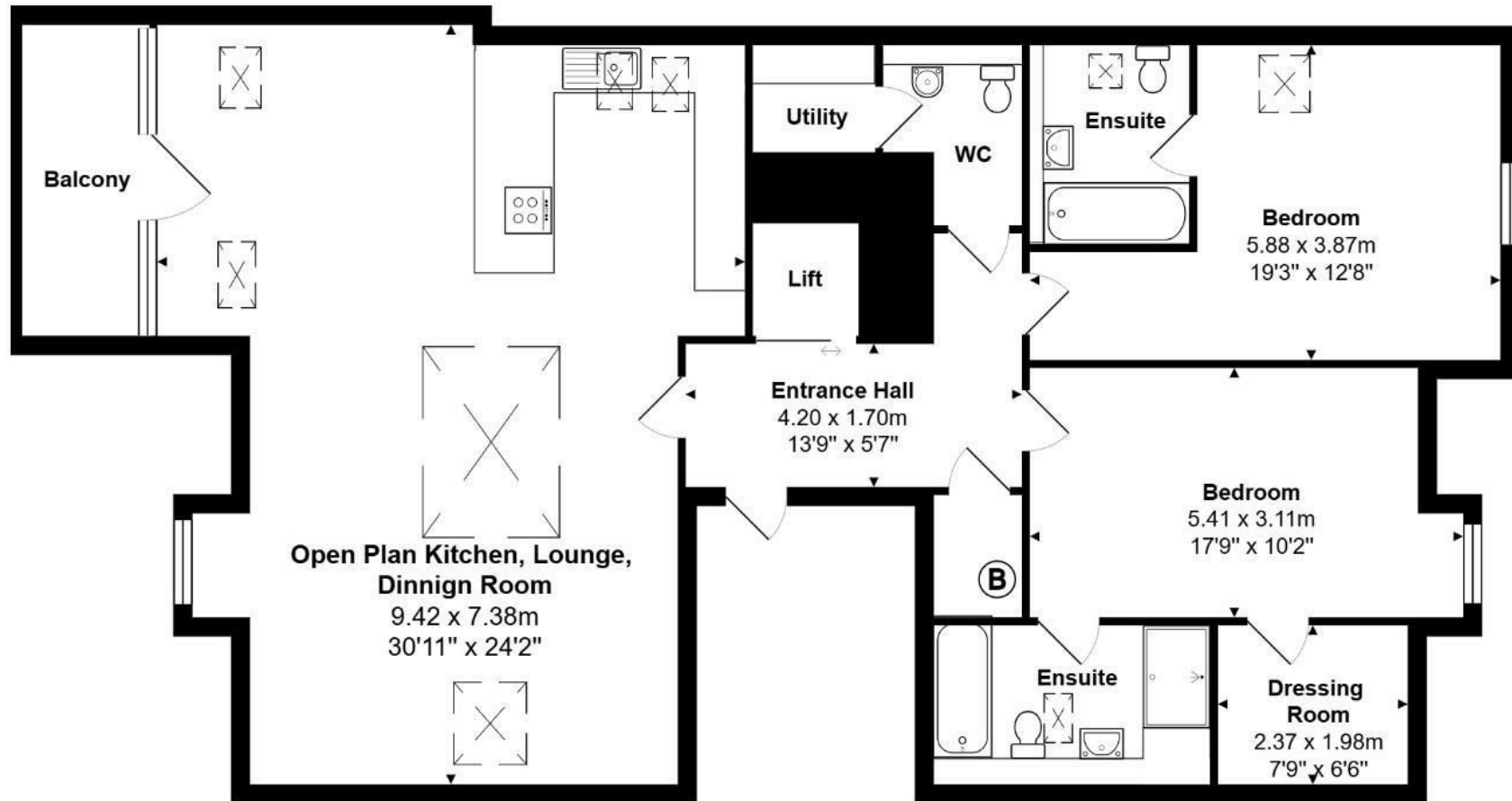
Situated between the highly sought-after coastal villages of Lilliput and Canford Cliffs, the property is moments from Sandbanks' award-winning beaches, Salterns Marina, and a range of boutique cafés and amenities. The area is well connected, with excellent transport links to Poole, Bournemouth, Southampton, and London via nearby mainline rail services.

AT A GLANCE

Guide Price:	£499,950
Tenure:	Leasehold - Share of Freehold
Stamp Duty:	£14,997 main home
Local Authority:	BCP Council
Council Tax:	£2,993.31 Band E

KEY FEATURES

- Exceptional top-floor penthouse apartment
- Overlooking the 5th tee of Parkstone Golf Course
- Two double bedrooms, both with luxury en-suites
- Open-plan kitchen/lifestyle room with integrated appliances
- Private balcony with elevated treetop views
- Two secure underground parking spaces plus private store room
- Lift access directly to apartment and parking
- Prime location close to Sandbanks, Lilliput & Canford Cliffs
- Water softener • Low level mood lighting



Total Area: 136.5 m² ... 1469 ft²

All measurements are approximate and for display purposes only

LLOYDS

Important notice Lloyds Property Sales Ltd, its clients and any joint agents give notice that 1: They are not authorised to make or give any representations or warranties in relation to the property either here or elsewhere, either on their own behalf or on behalf of their client otherwise. They assume no responsibility for any statement that may be made in these particulars. These particulars do not form part of any offer or contract and must not be relied upon as statements or representations of fact. 2: Any areas, measurements or distances are approximate. The text, photographs and plans are for guidance only and are not necessarily comprehensive. It should not be assumed that the property has all necessary planning, building regulation or other consents and Lloyds Property Sales have not tested any services, equipment or facilities. Purchasers must satisfy themselves by inspection or otherwise.