



Connells

Hillside .
Ludwell Shaftesbury



Property Description

Nestled in the desirable village of Ludwell with its village shop, traditional butcher and welcoming pub—and just a short drive from the historic town of Shaftesbury, this beautifully presented character home offers generous and versatile accommodation throughout.

The property boasts 5 bedrooms, including a convenient ground floor bedroom complete with its own ensuite, perfect for guests or multi-generational living. On the ground floor, there are 3 inviting reception rooms, a spacious lounge, dining room and cosy snug, all rich in character and charm. The kitchen sits to the rear of the property, complemented by a separate utility room.

Character features abound, including exposed beams and attractive open fireplaces in both the lounge and dining room, creating a wonderfully warm and welcoming atmosphere. To the front, the windows on both the ground and first floor are fitted with acoustic glazing, providing enhanced peace and quiet.

The first floor is home to a stunning master bedroom with its own ensuite, alongside additional bedrooms arranged across the first and second floors and a well-appointed shower room.

Outside, the garden is a true highlight. The generous plot includes a courtyard garden directly off the kitchen, ideal for alfresco dining. A timber veranda with an integrated sauna provides a great sociable space for relaxing or entertaining. The garden extends to the rear where a stream adds to the tranquil setting. There is also off-road parking for 2-3 cars.

Lounge

Windows to the front and rear, exposed beams, feature fireplace with a log burner and a radiator.

Dining Room

Front door leading into the dining room, with an open fireplace. radiator and open to the kitchen.

Kitchen

A stunning feature of the house is the light and airy kitchen with floor to ceiling windows to the rear, a fitted kitchen with wall and base units, belfast sink with a window above to the side, feature island, range master oven, space for a fridge/freezer and a radiator.

Utility Room

Accessed to the rear of the kitchen, with the boiler, storage cupboards, plumbing for a washing machine, belfast sink, door leading to the garden with a window above.

Snug

Window to the front, a great extra living space with exposed beams and a radiator.

Ground Floor Bedroom

Window to the side, french doors leading on to the garden, radiator and door to an ensuite.

Ensuite

Window to the side, walk in shower, wash hand basin and a WC.

First Floor

Master Bedroom

A spacious master bedroom with windows to the front and rear, radiator and open to the ensuite bathroom.

Ensuite Bathroom

A real feature of a roll top bath in the centre, with WC and wash hand basin, radiator and two windows to front.

Bedroom Three

Window to the front and a radiator.

Shower Room

Window to the rear, walk in shower, WC, wash hand basin and a radiator.

Second Floor

Bedroom Four

A triple aspect room with exposed beams and a radiator.

Bedroom Five

Window to the front, exposed beams, storage in the eaves and a radiator.

Office Space

Office area with exposed beams and access to the two second floor bedrooms.

Parking

To the side of the property there is access to the rear with parking for 2/3 cars.

Rear Garden

Substantial garden to the rear, with a courtyard seating area off the kitchen, the remainder of the garden is laid to lawn with established trees and shrubs, a stream running to the bottom being a really lovely feature. A wooden seating/entertaining area with a sauna and outbuildings.

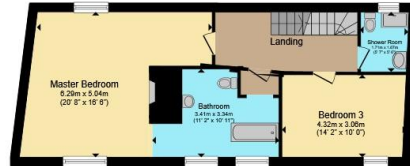




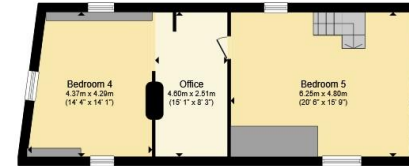




Ground Floor



First Floor



Second Floor

Total floor area 251.1 m² (2,703 sq.ft.) approx

This floor plan is for illustrative purposes only. It is not drawn to scale. Any measurements, floor areas (including any total floor area), openings and orientation are approximate. No details are guaranteed, they cannot be relied upon for any purpose and they do not form part of any agreement. No liability is taken for any error, omission or misstatement. A party must rely upon its own inspection(s). Powered by www.propertybox.io



To view this property please contact Connells on

T 01747 854 001
E shaftesbury@connells.co.uk

34 High Street
 SHAFTESBURY SP7 8JG

EPC Rating: Awaited
 Council Tax Band: E

Tenure: Freehold

view this property online connells.co.uk/Property/SFT306408



1. MONEY LAUNDERING REGULATIONS Intending purchasers will be asked to produce identification documentation at a later stage and we would ask for your co-operation in order that there will be no delay in agreeing the sale. 2. These particulars do not constitute part or all of an offer or contract. 3. The measurements indicated are supplied for guidance only and as such must be considered incorrect. Potential buyers are advised to recheck measurements before committing to any expense. 4. We have not tested any apparatus, equipment, fixtures, fittings or services and it is in the buyers interest to check the working condition of any appliances.

Connells Residential is registered in England and Wales under company number 1489613, Registered Office is Cumbria House, 16-20 Hockliffe Street, Leighton Buzzard, Bedfordshire, LU7 1GN. VAT Registration Number is 500 2481 05.

See all our properties at www.connells.co.uk | www.rightmove.co.uk | www.zoopla.co.uk

Property Ref: SFT306408 - 0003