



Kingsley Close, Mansfield Woodhouse  
£320,000

 **NEWTON FALLOWELL**

## Kingsley Close

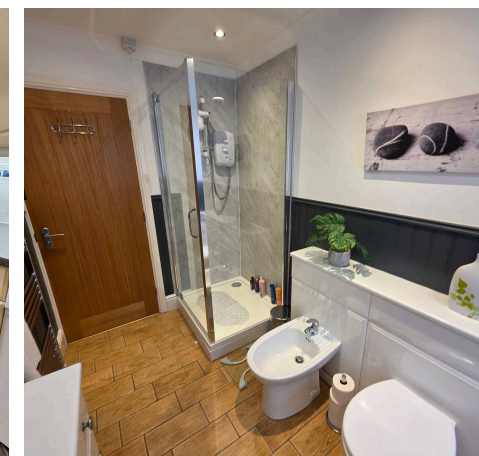
### Mansfield Woodhouse

Situated in a desirable residential location on Kingsley Close, Mansfield Woodhouse, this three-bedroom detached bungalow offers spacious single-level living finished to a modern standard throughout.

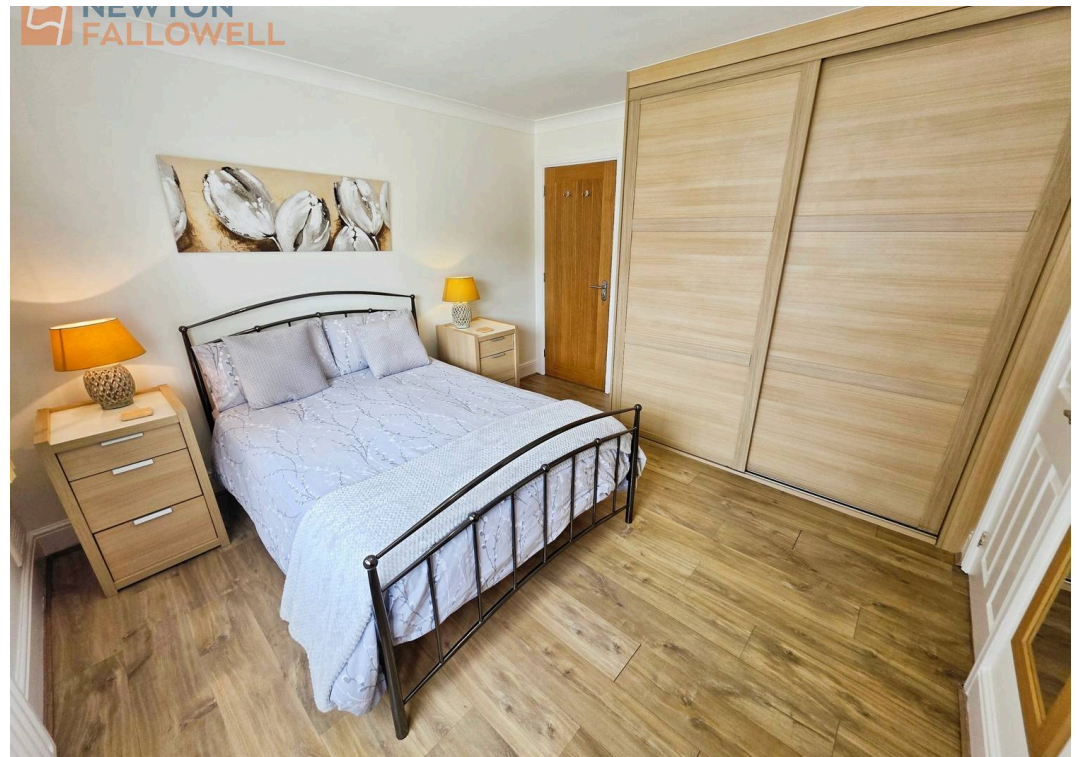
Council Tax band: C

Tenure: Freehold

- Three Bedrooms
- Stunning Detached Bungalow
- Driveway Parking
- Modern Finish
- Well Taken Care of











## Newton Fallowell Mansfield

Newton Fallowell Estate Agents, 13 Market Street - NG18 1JG

01623  
424616

· [Mansfield@newtonfallowell.co.uk](mailto:Mansfield@newtonfallowell.co.uk)

· [www.newtonfallowell.co.uk/mansfield-estate-agents/](http://www.newtonfallowell.co.uk/mansfield-estate-agents/)

 **NEWTON FALLOWELL**