



**11 Somerset Drive**

Kidderminster, DY11 5JG

**Andrew Grant**

# 11 Somerset Drive

Kidderminster, DY11 5JG

**3 Bedrooms   1 Bathroom   1 Reception Room**

A spacious, dormer bungalow in a quiet Marlpool cul de sac with generous lounge, fitted kitchen, mature garden and ample parking

- Well proportioned dormer bungalow set in a peaceful cul de sac
- Well proportioned lounge flowing to a fitted kitchen
- Mature rear garden with lawn, patio area and established shrubs
- Long driveway leading to a rewired garage and timber outbuilding
- Convenient Marlpool location close to bus routes, shops and amenities

This semi detached dormer bungalow offers flexible accommodation across two floors. The ground floor contains two bedrooms, a modern bathroom, a fitted kitchen and a generous lounge, while a spacious main bedroom with built in wardrobes occupies the first floor. Outside there is a lawned rear garden edged with mature trees, a detached garage and driveway parking. Situated in a peaceful Marlpool cul de sac with transport links and local amenities nearby, this welcoming home combines comfortable living spaces with convenience.

995 sq ft (92.4 sq m)





## The kitchen

Serving as the practical heart of the home, the kitchen provides a dedicated space for preparing meals and socialising. It is fitted with a range of wall and base units topped with contrasting work surfaces, including an integrated electric hob and oven with extractor, and a stainless steel sink beneath a wide window looking onto the garden. A door opens to the side, while an open doorway links directly to the lounge for ease when entertaining.



## The living and dining room

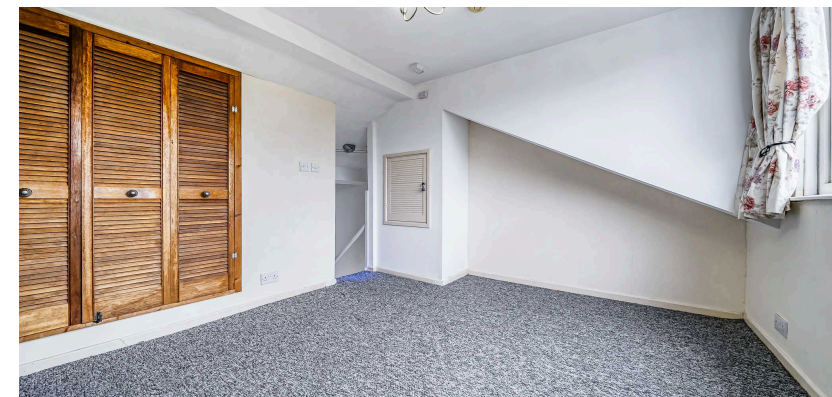
The generous living and dining room is a central space for relaxing and gathering. A broad picture window frames views of the rear garden, creating an attractive backdrop for seating and dining areas. Doorways lead through to the kitchen, hall and second bedroom allowing the space to flow easily between rooms and offering flexibility for family life.





## The primary bedroom

Occupying the first floor, the primary bedroom provides a peaceful retreat. A full width dormer window spans the room, while extensive built in wardrobes and eaves cupboards offer plenty of fitted storage. The sloping ceiling adds character, and there is ample space for a double bed and additional furniture.







## The second bedroom

This ground floor bedroom provides comfortable accommodation for family members or guests. A front facing window overlooks the cul de sac while its sensible proportions allow for a double bed and freestanding furniture. Set off the living room, it offers easy access to the rest of the accommodation and can also serve as a home office if required.





## The third bedroom

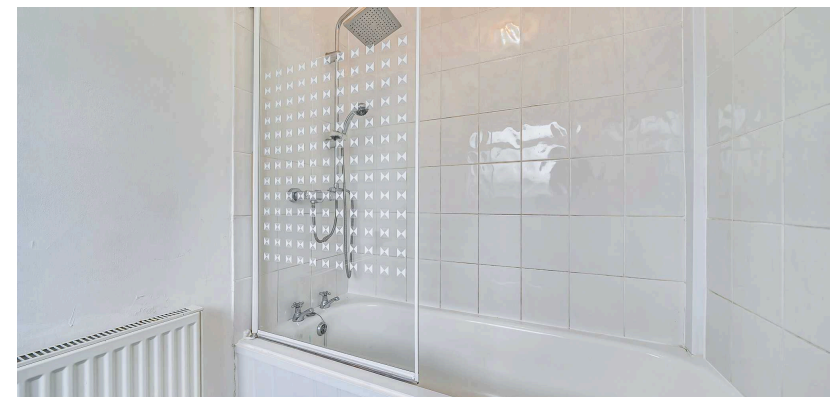
Currently arranged as a single room, the third bedroom offers useful flexibility. A window to the front elevation provides an outlook over the street. Situated off the hall, its compact footprint makes it ideal for use as a bedroom, study or nursery and ensures it remains connected to the ground floor living spaces.





## The bathroom

The family bathroom serves the ground floor. The suite comprises a panelled bath with shower over and patterned glass screen, a contemporary basin set within a vanity unit and a close coupled WC. A frosted window maintains privacy while allowing ventilation.





## The garden

Behind the home, the enclosed garden provides a private outdoor space for relaxation. It is laid principally to lawn with mature shrubs and trees along the boundaries, plus a paved area adjacent to the house for seating or barbecues. There is access to the garage and driveway, and established hedging ensures seclusion.





## The driveway and parking

To the side, a double-width driveway provides generous off-road parking and can easily accommodate motorhomes or caravans. It leads to a brick-built garage with an up-and-over door, recently rewired for power and lighting, along with a timber outbuilding that offers additional storage. A neat lawn and planted border soften the frontage, while gated side access leads through to the rear garden.



## Location

Kidderminster is a thriving Worcestershire town with a wide range of amenities, including shops, supermarkets and recreational facilities. Marlpool is a mature residential district characterised by bungalows and family homes. Public transport routes along nearby roads connect the property to the town centre and surrounding areas, and there are schools within easy reach. Green spaces, canal walks and countryside are close by, while road links provide convenient travel to neighbouring towns and the wider region.

## Services

The property benefits from mains gas, electricity, water and drainage. A new boiler was fitted in January 2025.

Broadband Speed: Ultrafast broadband available. Download speeds up to 1800 Mbps and upload speeds up to 220 Mbps (source: Ofcom checker).

Mobile Coverage: Likely available from EE, O2, Three and Vodafone. (source: Ofcom checker).

Flood Risk (Long-term forecast): According to the Environment Agency's long-term flood risk data, the property is currently at very low risk for river and surface water flooding.

## Council Tax

The Council Tax for this property is C.



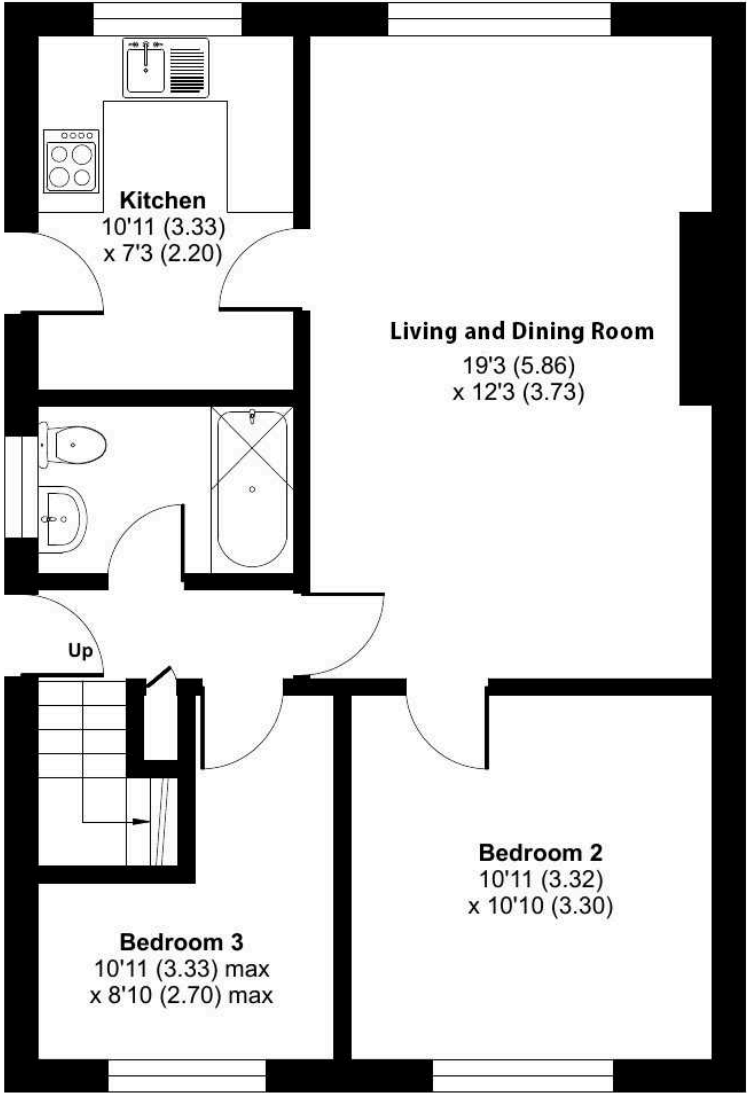
# Somerset Drive, Kidderminster, DY11

Approximate Area = 830 sq ft / 77.1 sq m

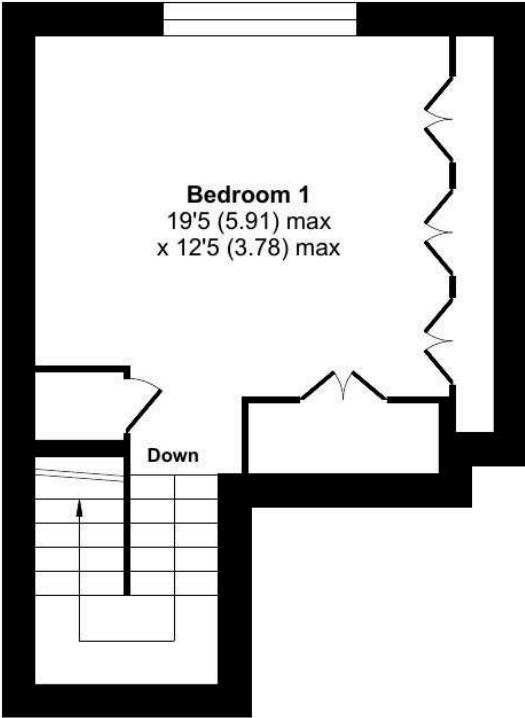
Garage = 165 sq ft / 15.3 sq m

Total = 995 sq ft / 92.4 sq m

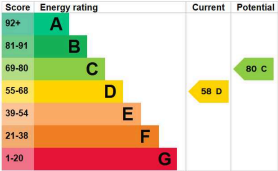
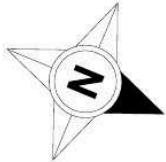
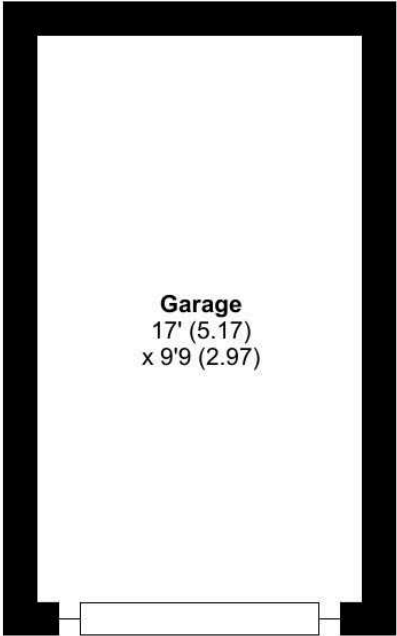
For identification only - Not to scale



**GROUND FLOOR**



**FIRST FLOOR**



Floor plan produced in accordance with RICS Property Measurement 2nd Edition, Incorporating International Property Measurement Standards (IPMS2 Residential). © n̄checom 2026. Produced for Andrew Grant. REF: 1438109



DISCLAIMER: These particulars are not to form part of a Sale Contract owing to the possibility of errors and/or omissions. Prospective purchasers should therefore satisfy themselves by inspection or otherwise as to their correctness. All fixtures, fittings, chattels and other items not mentioned are specifically excluded unless otherwise agreed within the Sale Contract documentation or left in situ and gratis upon completion. The property is also sold subject to rights of way, public footpaths, easements, wayleaves, covenants and any other matters which may affect the legal title. The Agent has not formally verified the property's structural integrity, ownership, tenure, acreage, estimated square footage, planning/building regulations' status or the availability/operation of services and/or appliances. Therefore prospective purchasers are advised to seek validation of all the above matters prior to expressing any formal intent to purchase. We commonly receive referral fees from specialist service partners – an outline of these can be found here: <https://cutt.ly/referrals> and are reviewed annually in line with our financial year to identify any changes in average fee received.



Andrew Grant

T. 01905 734734

E. [hello@andrewgrant.com](mailto:hello@andrewgrant.com)

[andrewgrant.com](http://andrewgrant.com)