



Hyde Park Gate, SW7

£1,292 Per week

A spacious and well-presented three-bedroom, two-bathroom apartment is available for rent. The property features a large eat-in kitchen, a balcony, three equally-sized rooms, and a porter in the building.

Situated just across from the entrance to Hyde Park, this stunning building is located 0.6 miles from both High Street Kensington and Gloucester Road stations. The property is also conveniently positioned around the corner from Queen's Gate, with its numerous coffee shops and restaurants.

Features

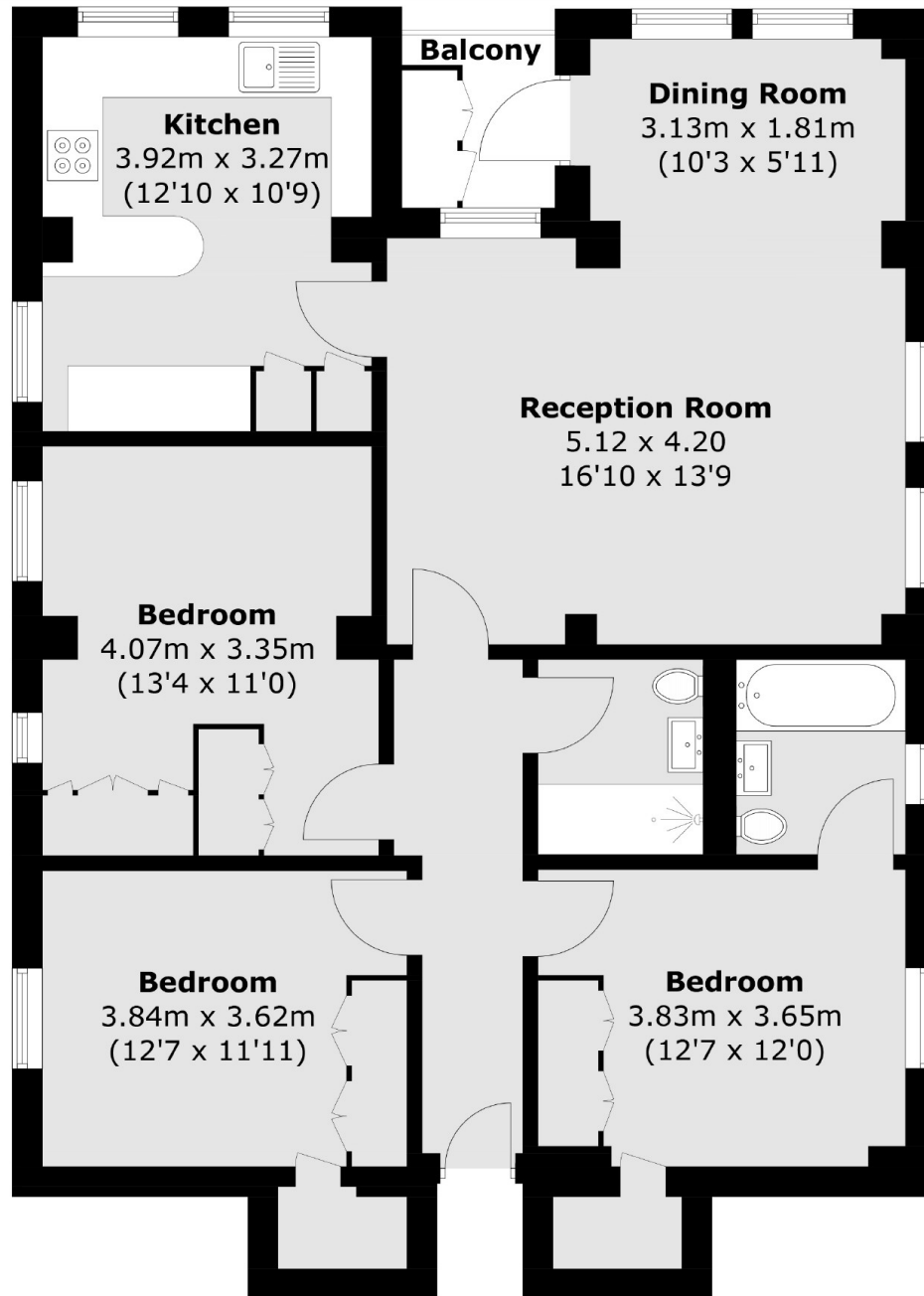
- Three Bedrooms
- Wooden floors throughout
- Balcony
- Separate eat-in Kitchen
- Porter
- Furnished



Hyde Park Gate, SW7



Hyde Park Gate,
London, SW7



Third Floor

Total area (approx.): 94.5 sq. m (1,017 sq. ft)
Balcony: 2.6 sq. m (28.0 sq. ft)