



*jordanfishwick*

Sheen Gardens

£1,200 PCM



## Sheen Gardens, Manchester, M22 5LE

£1,200 PCM

Contemporary two-bedroom ground floor luxury apartment AVAILABLE MID JUNE AND PART FURNISHED on a highly sought after development close to Manchester Airport, Heald Green and conveniently placed for access into Wilmslow village and Manchester Airport.

Communal entrance hallway, private entrance hallway with intercom, open plan living room and modern fitted kitchen, master bedroom with en-suite shower room, second well-proportioned bedroom and white three-piece bathroom suite.

The property has an allocated parking space and a lift provides access to all floors

Contact Wilmslow 01625 536300 £1200.00pcm

COUNCIL TAX B

EPC B

### LOCATION

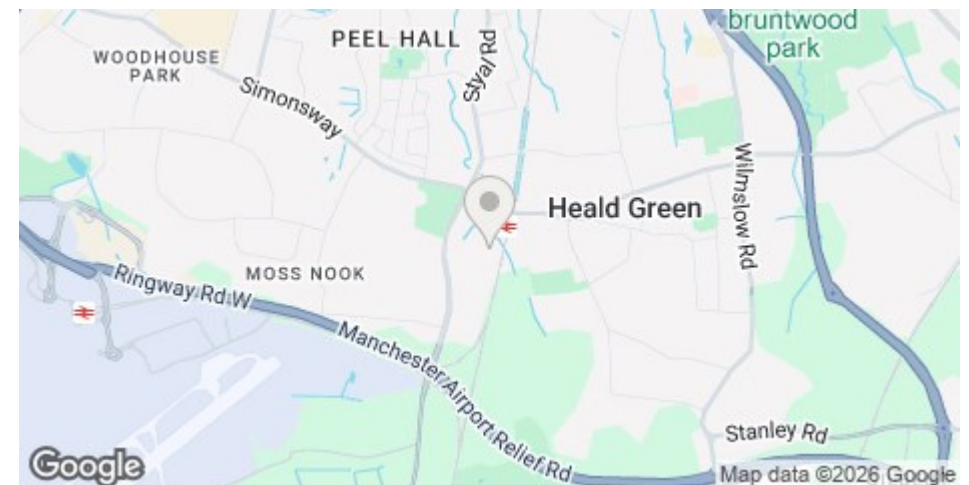
Sheen Gardens is an extremely popular development highly sought after because of its proximity to Manchester International Airport.

Jordan Fishwick Estate and Letting Agents Wilmslow office is located in a prime position central to the bustling and stylish town centre. With our impressive frontage it's impossible to miss our attractive office.

Our busy lettings department has knowledgeable and friendly staff and we are known throughout the Wilmslow area for our proactive approach in helping people find their dream home

### DIRECTIONS

Proceed along Styal Road towards Manchester International Airport and turn right onto Longstone Road and then left onto Sheen Gardens



- TWO BEDROOMS
- POPULAR LOCATION
- EXCELLENT ACCESS TO AIRPORT
- TWO BATHROOMS
- COUNCIL TAX B
- EPC B

Postcode - M22 5LE

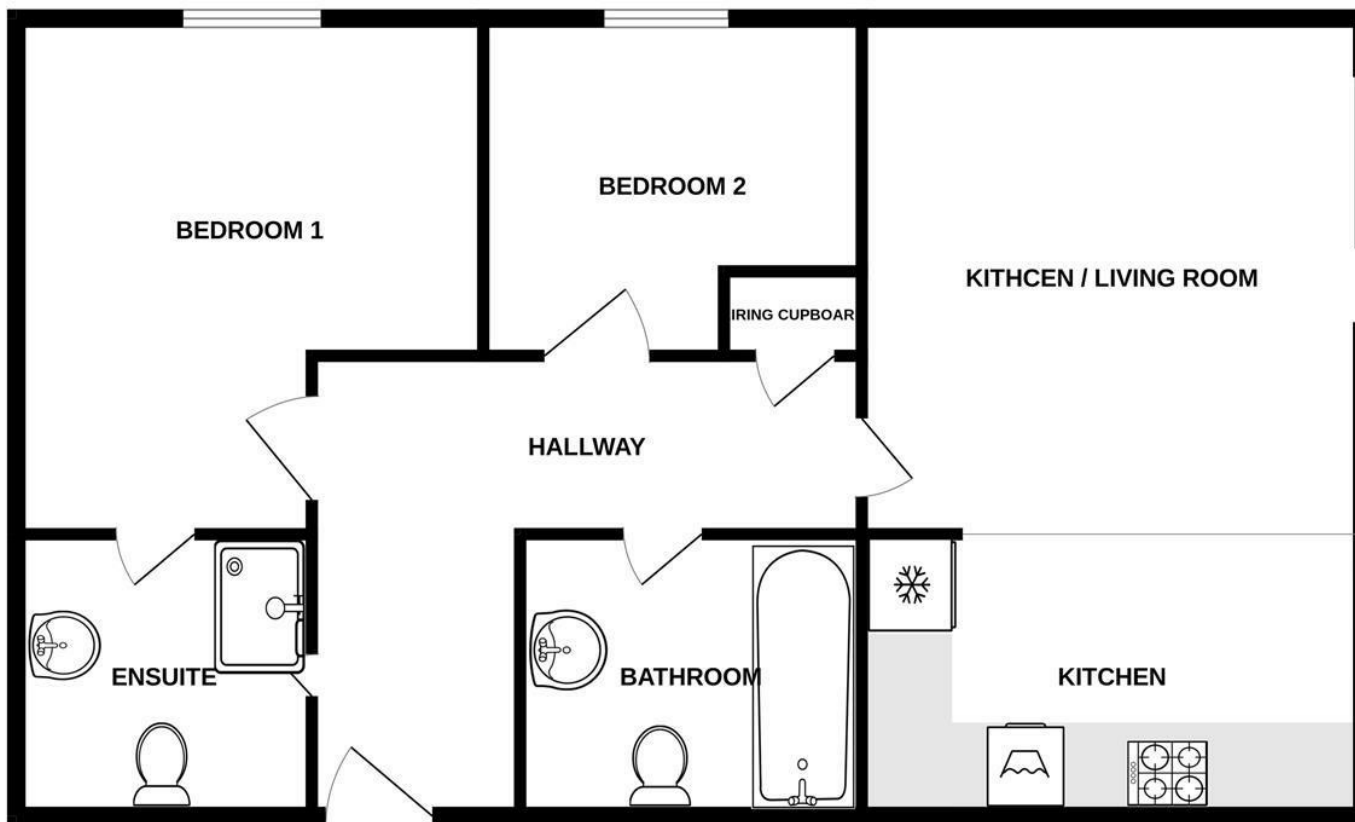
EPC Rating - B

Floor Area - sq ft

Local Authority - Manchester City Council

Council Tax - B





Measurements are approximate. Not to scale. Illustrative purposes only  
 Made with Metropix ©2026



These particulars are believed to be accurate but they are not guaranteed and do not form a contract. Neither Jordan Fishwick nor the vendor or lessor accept any responsibility in respect of these particulars, which are not intended to be statements or representations of fact and any intending purchaser or lessee must satisfy himself by inspection or otherwise as to the correctness of each of the statements contained in these particulars. Any floorplans on this brochure are for illustrative purposes only and are not necessarily to scale.

Offices at: Offices at Chorlton, Didsbury, Disley, Hale, Glossop, Macclesfield, Manchester Deansgate, Manchester Whitworth Street, New Mills, Sale, Wilmslow and Withington

01625 502222