



## Grove End Road, NW8

£600 Per week

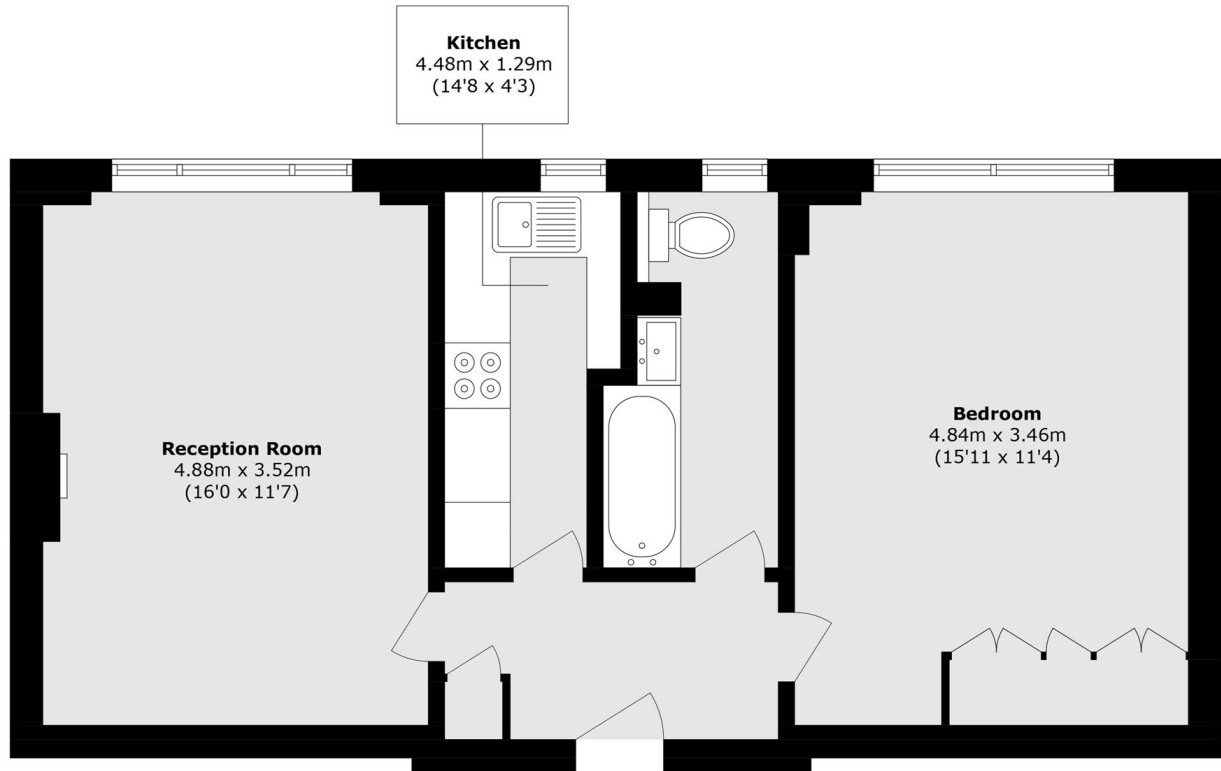
A one double bedroom apartment, set on the first floor, in a portered block that has lift access. The property has a bright reception room with wooden floors, kitchen, one double bedroom and communal gardens. Heating and hot water included within the rent.

Ascot Court is located a short distance from St Johns Wood Underground Station (Jubilee Line) and all local shops, cafés and restaurants on St Johns Wood High Street.

### Features

- One Double Bedroom
- Bright Reception Room
- Portered Block
- First Floor
- Good Location
- Communal Heating and Hot Water

# Grove End Road, London, NW8



Total area (approx.): 50.8sq. m ( 546.8 sq. ft)