



INTERLET

JUNIPER COURT, ST. MARYS PLACE, HIGH STREET KENSINGTON,
LONDON, W8
£750 PW



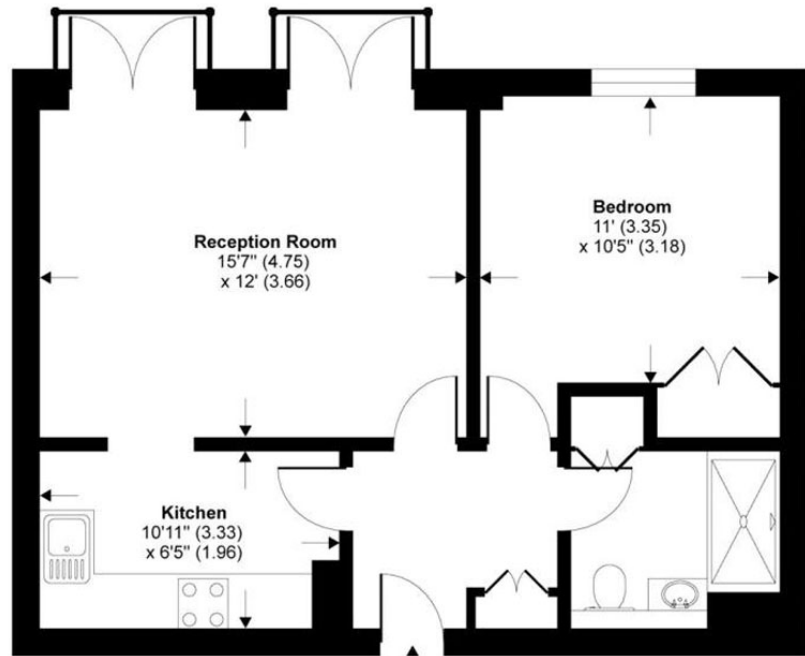
A fantastic first-floor one-bedroom apartment situated within this highly desirable gated and portered development at Kensington Green, St Mary's Place, W8. The property has been finished to a high standard and comprises a bright reception room with two sets of charming French doors opening onto a Juliette balcony, a contemporary shower room, an open-plan fitted kitchen, and a double bedroom with fitted wardrobes. The building further benefits from a lift, residents' parking, and access to on-site gym facilities. Ideally located in the heart of Kensington, the property is within a short distance of Kensington High Street, offering an excellent selection of boutiques, cafés, restaurants, and everyday amenities, as well as convenient transport links via High Street [...]

lettings@interlet.com

+44(0)20 7795 6525

www.interlet.com

St. Marys Place, London, W8

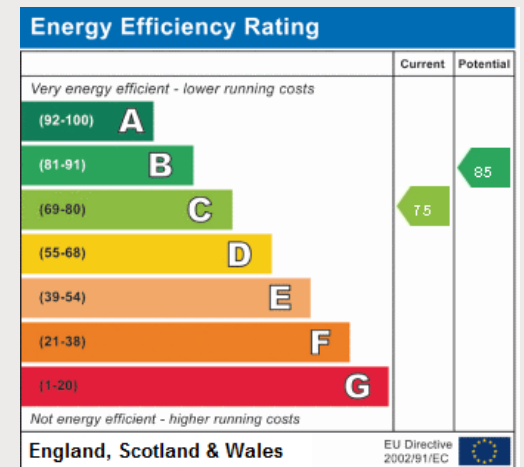


FIRST FLOOR

TOTAL GROSS INTERNAL FLOOR AREA 521 SQ FT 48.4 SQ METRES

Important Notice

Interlet and their clients give notice that: 1) They are not authorised to make or give any representations or warranties in relation to the property, either here or elsewhere. The particulars do not form part of any offer or contract and must not be relied upon as statements or representations of fact. 2) Any areas, measurements, and distances are approximate. The text, images, and plans are for guidance only and are not necessarily comprehensive. It should not be assumed that the property has all necessary planning, building regulation, or other contents. Interlet has not tested any services, equipment, or facilities. Prospective tenants must satisfy themselves by inspection or otherwise. Please note that the local area may be affected by aircraft noise, you should make your own inquiries regarding any noise in the area before you make an offer.



iNTERLET
SALES & LETTINGS

Welcome home.