



## St. Saviours Estate, SE1

### £240,000

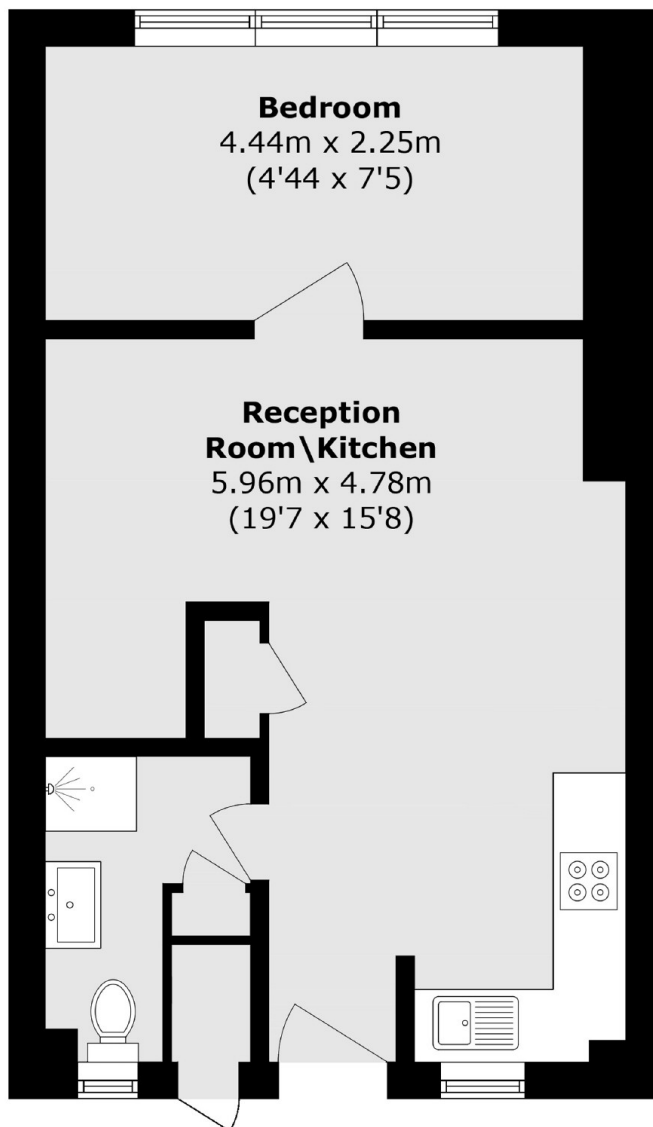
Located in the heart of Bermondsey, this one bedroom apartment has an open plan kitchen living area, modern bathroom, ample storage, access to the communal garden and parking.

Breton House is located 0.5 miles from Bermondsey station and 0.8 miles from London Bridge. Maltby Street market is also close by as well as the shops, cafés and restaurants of Bermondsey Street.

### Features

- One Bedroom Flat
- Communal Gardens
- Parking
- Ample Storage
- Fantastic Location
- Great Transport Links

# St. Saviours Estate, London, SE1



Total area (approx.): 39.1 sq. m (420.8 sq. ft)

External storage (approx.): 6.3 sq. m (67.8 sq. ft)