



Price
£350,000

Freehold

3x  1x  1x 

**Cypress Road,
Frindsbury, Rochester,
Kent, ME2**

OVER 60?

Secure this property
for up to **59% less!**

Wards
Helping you move forwards



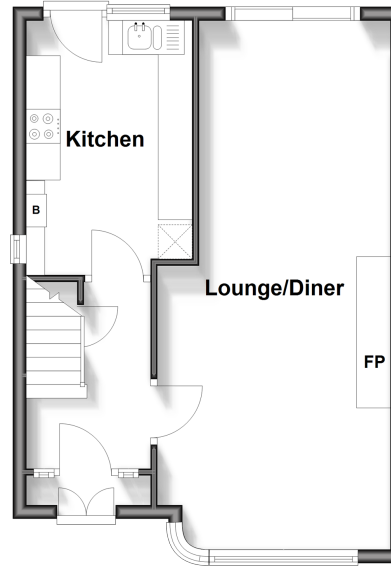
Main features

- Semi-detached house with driveway
- Sought-after residential location
- Solar panels with a battery to help improve energy efficiency
- Spacious 17ft loft room
- Outbuilding providing extra space
- Walking distance to schools, amenities and mainline railway station

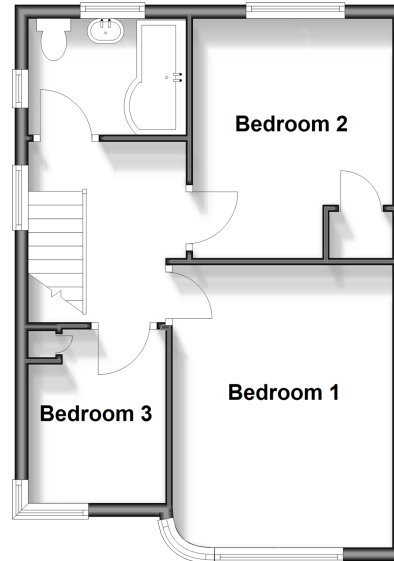
Call Strood - 01634 716597 ■ wardsofkent.co.uk

■ Through a Homewise Home For Life Plan people aged 60+ can secure this property for up to 59% less, by purchasing a Lifetime Lease

Ground Floor
Approx. 40.2 sq. metres (432.3 sq. feet)



First Floor
Approx. 40.3 sq. metres (433.9 sq. feet)



Accommodation

GROUND FLOOR

Entrance Porch
Entrance Hall
Lounge/Diner: 26'7 x 10'4 (8.11m x 3.15m)
Kitchen: 12'8 x 7'10 (3.86m x 2.39m)

FIRST FLOOR

Landing
Bedroom 1: 14'1 x 10'5 (4.30m x 3.18m)
Bedroom 2: 12'2 x 9'6 (3.71m x 2.90m)
Bedroom 3: 8'5 x 7'0 (2.57m x 2.14m)
Bathroom
Loft Room: 17'8 x 11'2 (5.39m x 3.41m)

OUTSIDE

Driveway
Front Garden
Rear Garden



11846496/20260411/DV/TS