

Cromwell Road, SW7

£623 Per week

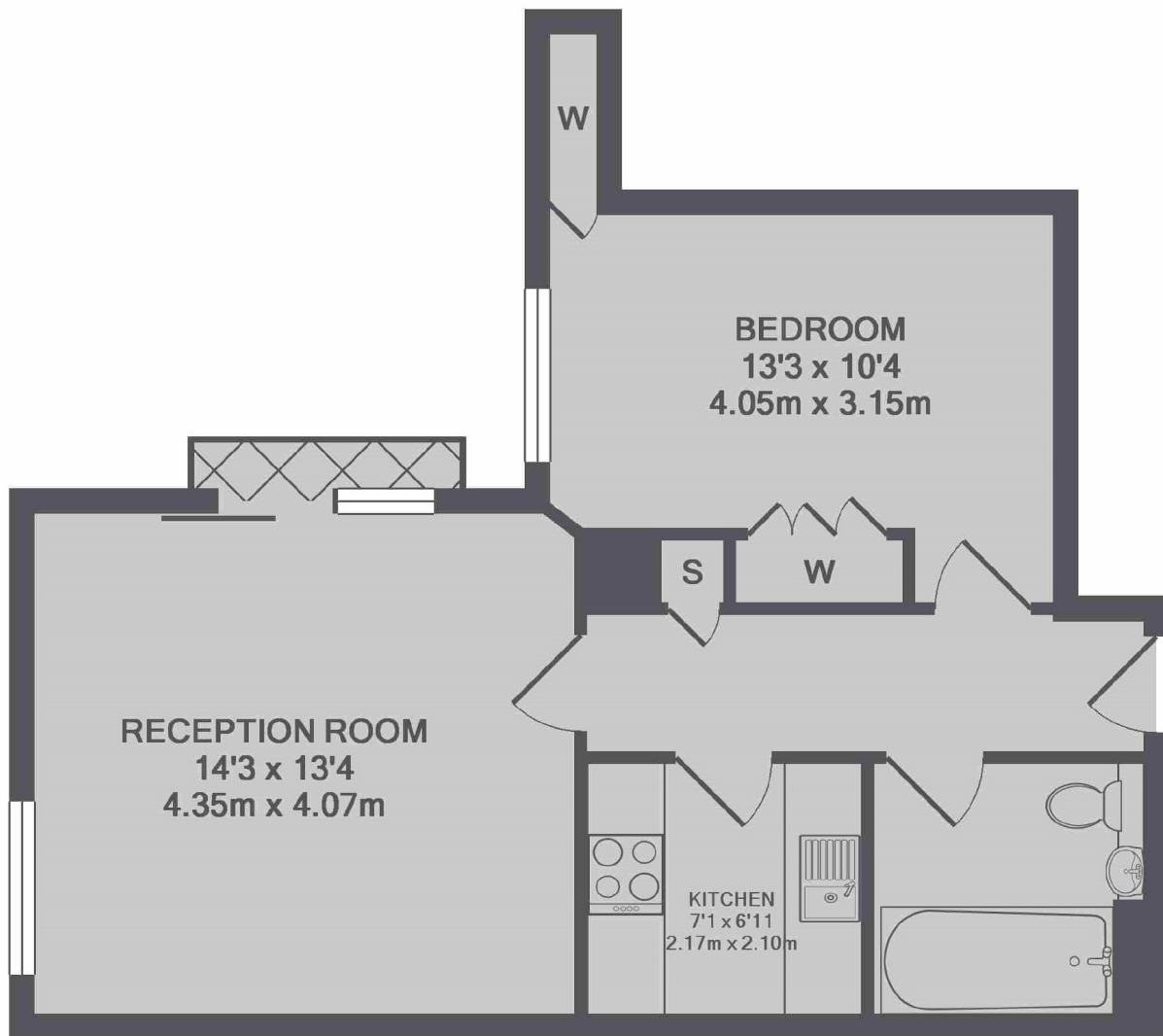
A well-presented and thoughtfully furnished one bedroom apartment is available to let on a furnished basis, located on the fourth floor of a well-regarded building.

The area is well served by local amenities, including a Waitrose supermarket, Paul's bakery, and a Boots pharmacy, all located near Gloucester Road. In addition, a Sainsbury's supermarket can be found next to Point West, just off Cromwell Road.

Features

- Large Double Bedroom
- Separate Kitchen
- Wooden Flooring
- Built-In Wardrobes
- 24-hour Porter
- Fourth Floor
- Lift Access

Cromwell Road, London, SW7



TOTAL APPROX. FLOOR AREA 496 SQ.FT. (46.1 SQ.M.)