



13 ALL SAINTS TERRACE, CHELTENHAM, GLOUCESTERSHIRE, GL52 6UA

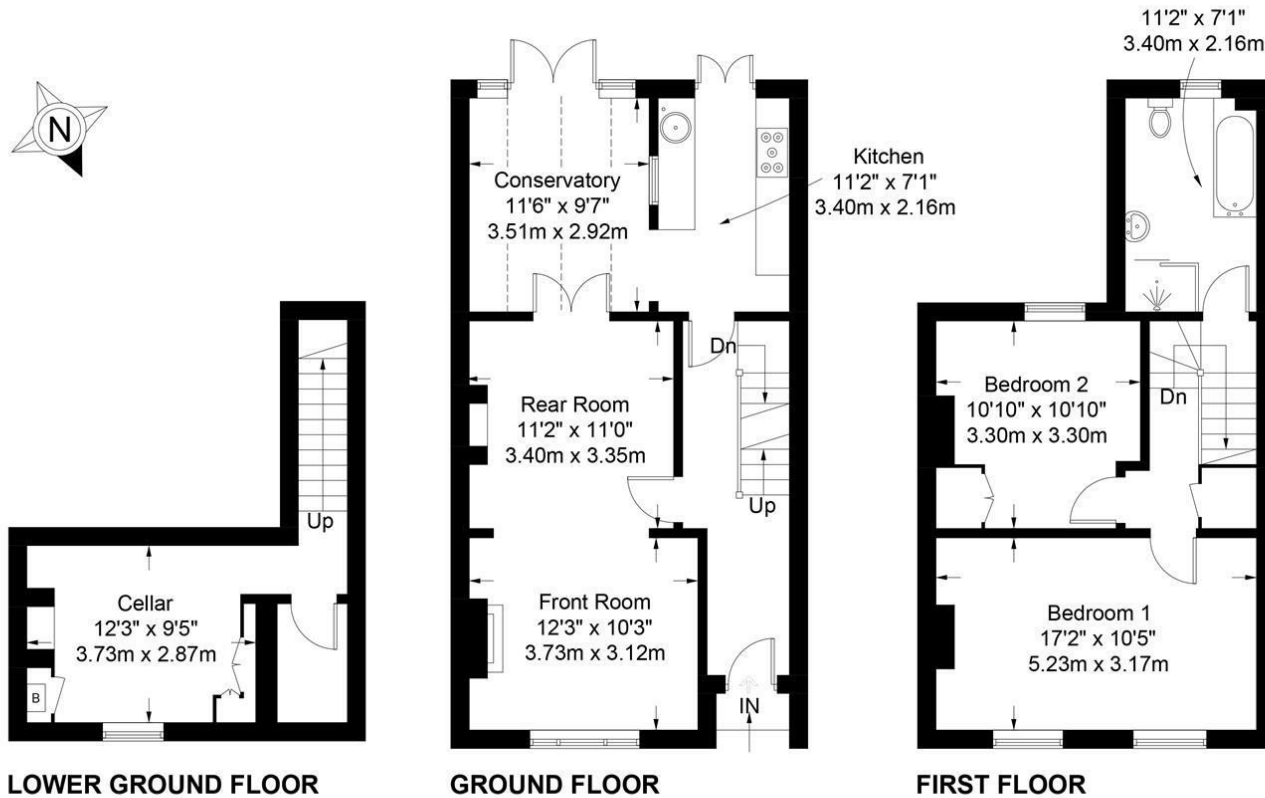
readmaurice 

BEAUTIFULLY PRESENTED PERIOD HOME OFFERING SPACIOUS ACCOMMODATION OVER TWO FLOORS WITH A USEFUL CELLAR ROOM. LOCATED IN A SOUGHT-AFTER CUL-DE-SAC, THIS CHARMING CHARACTER PROPERTY COMBINES ORIGINAL PERIOD FEATURES WITH CONTEMPORARY LIVING SPACE.





EPC: Band D
 Rating: 62
 Council Tax: C
 Area: 1233.00 sq ft



Approximate Gross Internal Area = 1233 sq ft / 114.6 sq m

Illustration for identification purposes only, measurements are approximate and are not to scale.
 Please check all details before making any decisions reliant upon them.
 Copyright Read Maurice. (ID1304121)



13 ALL SAINTS TERRACE, CHELTENHAM, GLOUCESTERSHIRE, GL52 6UA

These particulars, whilst believed to be accurate are set out as a general outline only for guidance and do not constitute any part of an offer or contract. Intending purchasers should not rely on them as statements or representation of fact, but must satisfy themselves by inspection or otherwise as to their accuracy. We have not carried out a detailed survey nor tested the services, appliances and specific fittings. Room sizes should not be relied upon for carpets and furnishings. The measurements given are approximate. No person in this firm's employment has the authority to make or give any representation or warranty in respect of the property. PRN: 19355413 - Date of printing 5th June 2026

readmaurice 

48 Andover Road, Cheltenham, GL50 2TL
 Tel: 01242 241122
 Email: post@readmaurice.co.uk
www.readmaurice.co.uk