



369 Long Riding, Basildon, SS14 1JP

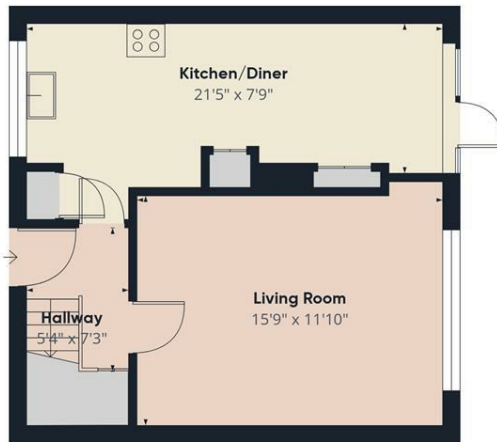
This mid-terrace house presents an excellent opportunity for both first-time buyers and families alike. Spanning an impressive 824 square feet, the property boasts three well-proportioned bedrooms, making it ideal for those seeking space and comfort.

Upon entering, you are welcomed into a bright and inviting reception room, perfect for relaxing or entertaining guests. The well-presented interiors create a warm and homely atmosphere, allowing you to move in with ease. The property features a well-appointed bathroom, catering to the needs of modern living.

One of the standout features of this home is its enviable location. Situated close to the town centre, residents will enjoy easy access to a variety of shops, restaurants, and local amenities. Additionally, the proximity to primary schools makes it an excellent choice for families with young children.

- No Onward Chain
- Three Bedrooms
- Great Sized Garden
- Close to Town Centre
- Well Presented
- Ideal Investment

£310,000



Floor 0



Floor 1

Approximate total area^m
824 ft²

(1) Excluding balconies and terraces

Calculations reference the RICS IPMS 3C standard. Measurements are approximate and not to scale. This floor plan is intended for illustration only.

GIRAFFE360

