



Acacia Road, W3

£350,000

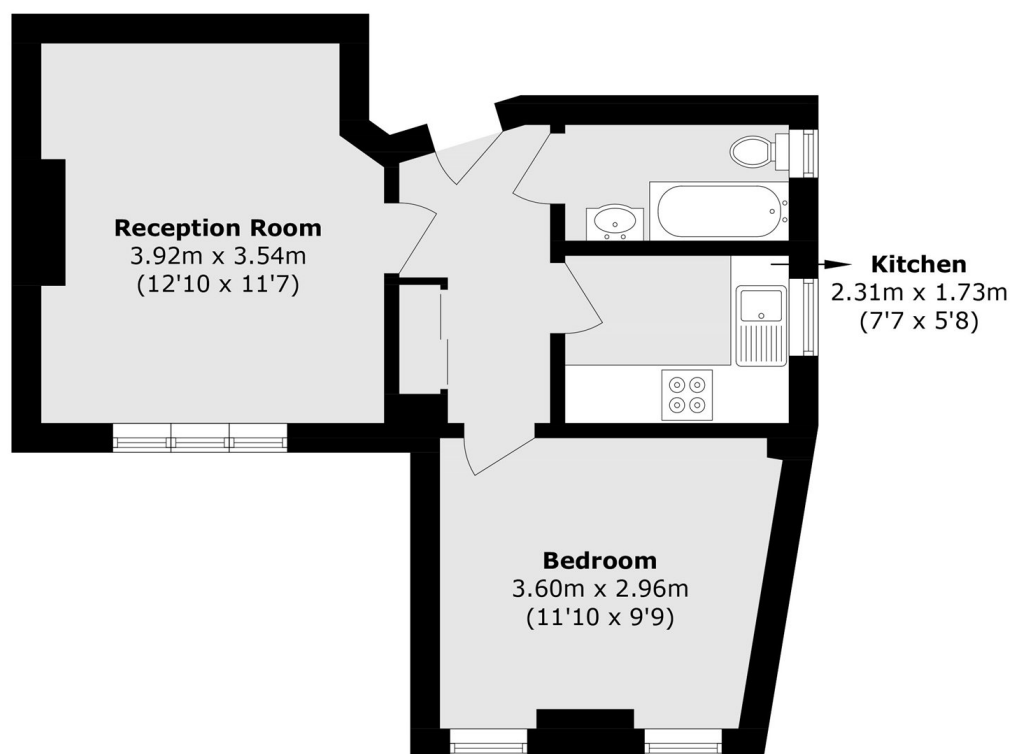
A top floor period conversion set within an imposing semi detached house located on a very popular road on the borders of Poets corner. The property has been renovated by the current owners and filled with natural light and has a share of the freehold

Acacia Road is a tree-lined residential street ideally positioned just moments from Churchfield Road, which offers a diverse selection of independent shops, cafes, and restaurants. Situated within 500 metres of Acton Main Line (Elizabeth line) and less than half a mile from Acton Central (Overground). Additionally, the green open spaces of Acton Park and Springfield Park are both within easy walking distance.

Features

- One Double Bedroom
- Period Conversions
- Top Floor
- Period Conversion
- Share of Freehold
- Poets Corner

Acacia Road, London, W3



Total area (approx.): 36.4 sq. m (391.8 sq. ft)