



Mount Villas, SE27 | £475,000

02087029888

westnorwood@pedderproperty.com

pedder
We live local



In General

- Two double bedrooms
- Private garden
- Additional room
- Great transport links
- Period conversion
- Share of Freehold
- Chain Free

In Detail

Nestled within a charming period conversion on the secluded Mount Villas, this beautifully presented two double-bedroom apartment offers generous living space across two levels.

Upon entering, you are welcomed by a bright and spacious reception room featuring large original sash windows that overlook the front garden, filling the room with natural light. High ceilings and newly laid wood flooring enhance the sense of space and character. The separate, neutrally finished eat-in kitchen enjoys views over the private rear garden, creating a peaceful setting for dining.

The lower level comprises two well-proportioned double bedrooms, an additional dressing room, and a contemporary family bathroom.

Ideally located within a short walk of both West Norwood and Tulse Hill stations, the property benefits from excellent transport links into London Bridge, London Blackfriars, and London Victoria. Frequent bus routes also provide easy access to Herne Hill, Dulwich, Streatham, and Brixton, making this a superb option for commuters and those seeking convenient connections across South London.

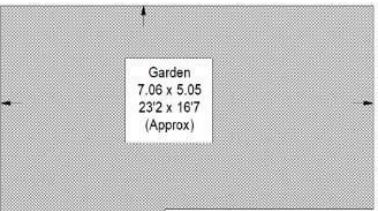
EPC: D | Council Tax Band: D | Lease: 962 years remaining | SC: £2,490 pa (includes sinking fund) | GR: Peppercorn | BI: Incl. in the SC



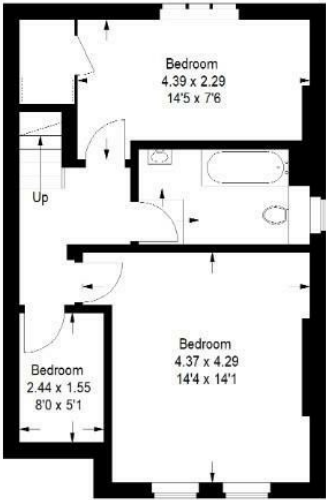
Floorplan

Mount Villas, SE27

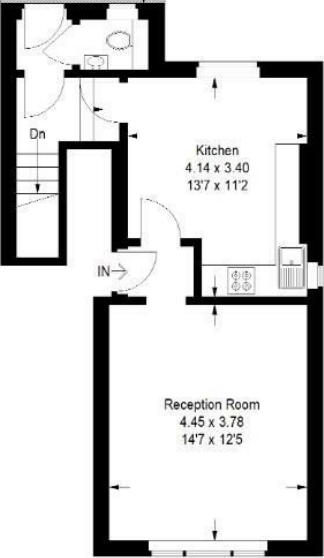
Approximate Gross Internal Area
85.5 sq m / 920 sq ft



Reduced Headroom Below 1.5 M / 5'0

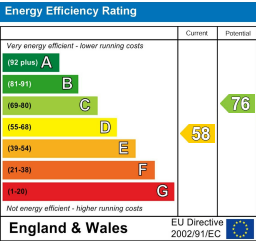


Basement



Raised Ground Floor

Copyright www.pedderproperty.com © 2025
These plans are for representation purposes only as defined by RICS - Code of Measuring Practice.
Not drawn to Scale. Windows and door openings are approximate. Please check all dimensions, shapes and compass bearings before making any decisions reliant upon them.



Pedder Property Ltd trading as Pedder for themselves and for the vendor/landlord of this property whose agents they are, give notice that (1) these particulars do not constitute any part of an offer or contract, (2) all statements contained within these particulars are made without responsibility on the part of Pedder or the vendor/landlord, (3) whilst made in good faith, none of the statements contained within these particulars are to be relied upon as a statement of representation or fact, (4) any intending purchaser/tenant must satisfy him/herself by inspection or otherwise as to the correctness of each of the statements contained within these particulars, (5) the vendor/landlord does not make or give either Pedder or any person in their employment any authority to make or give representation or warranty whatsoever in relation to this property.