



## Chiswick High Road, W4 £350,000

A bright and modern one bedroom, purpose-built apartment in this sought-after development. With lift access, open-plan kitchen/reception and offered with no onward chain - perfect as a first time buy or investment.

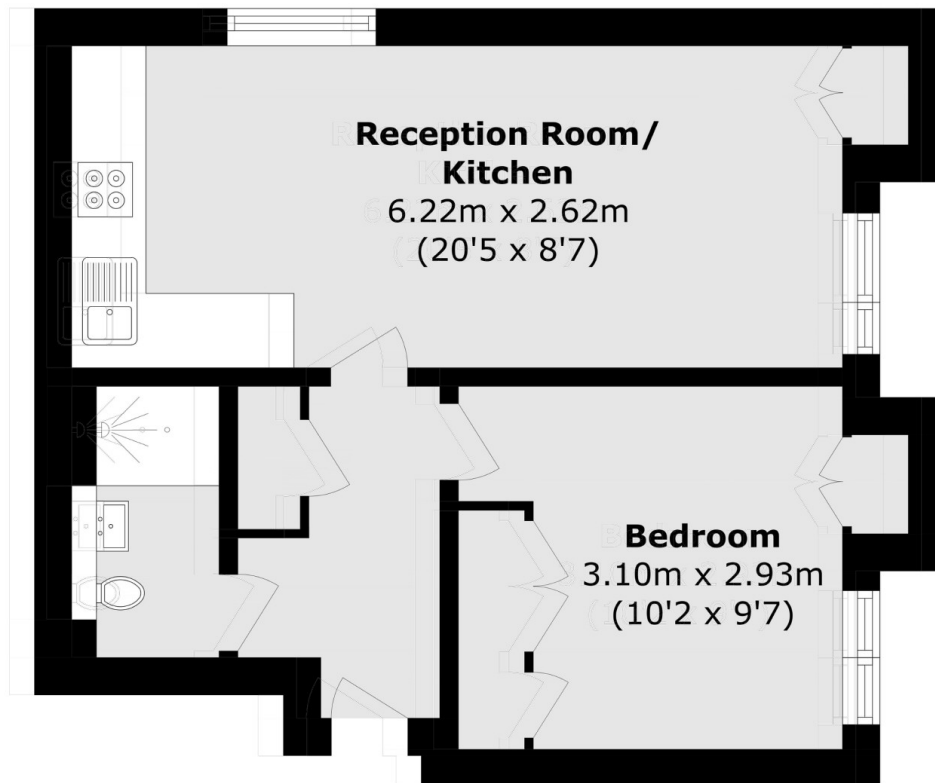
Chiswick High Road offers a brilliant array of shops, restaurants and cafés to choose from, as well as being serviced by Gunnersbury and Chiswick Park stations. The Thames riverside and Chiswick House and grounds are popular spots nearby.

### Features

One Double Bedroom  
Lift Access  
Modern Finish

Close To Amenities  
No Onward Chain

Chiswick High Road,  
London, W4



Total area (approx.): 34.4 sq. m (370.2 sq. ft)

**Dexters**

Chiswick  
388 Chiswick High Road  
London  
W4 5TF  
Sales  
020 8995 4321

Energy Rating: D. We aim to make our particulars both accurate and reliable. However they are not guaranteed; nor do they form part of an offer or contract. If you require clarification on any points then please contact us, especially if you're traveling some distance to view. Please note that appliances and heating systems have not been tested and therefore no warranties can be given as to their good working order.

 **RICS** | Regulated  
Estate Agent  
and Letting Agent

[dexters.co.uk](http://dexters.co.uk)