



## Isaac Way, SE1

£2,400 Per week

One bedroom apartment on the top floor, open plan kitchen and living room. Dual access to the balcony from living room and bedroom and views of The Shard.

Well located close to the amenities at Borough. Close by is the highly regarded Joe's Kitchen and the popular Lord Clyde pub, renowned for its friendly atmosphere.

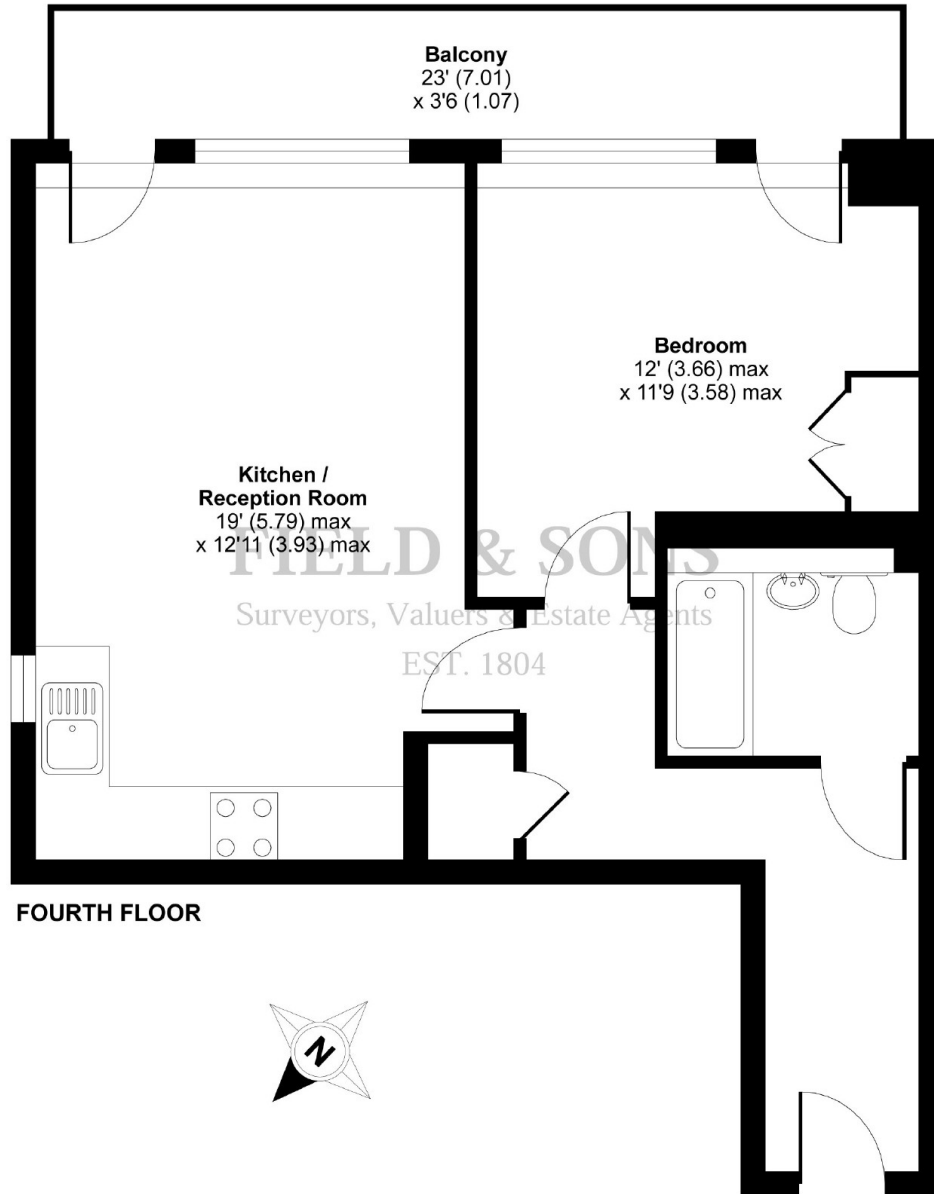
### Features

- Top Floor
- One Bedroom
- Underfloor Heating
- Double Balcony
- Secure Block

# Isaac Way, London, SE1

## Isaac Way, London, SE1

APPROX. GROSS INTERNAL FLOOR AREA 489 SQ FT 45.4 SQ METRES



Whilst every attempt has been made to ensure the accuracy of the floor plan contained here, measurements of doors, windows and rooms are approximate and no responsibility is taken for any error, omission or misstatement. These plans are for representation purposes only as defined by RICS Code of Measuring Practice and should be used as such by any prospective purchaser. Specifically no guarantee is given on the total square footage of the property if quoted on this plan. Any figure given is for initial guidance only and should not be relied on as a basis of valuation.

Copyright nichecom.co.uk 2016 Produced for Field & Sons REF : 102221

# Dexters

London Bridge  
54 Borough High Street  
London  
SE1 1XL  
Lettings  
020 7650 5101

Energy Rating: C. We aim to make our particulars both accurate and reliable. However they are not guaranteed; nor do they form part of an offer or contract. If you require clarification on any points then please contact us, especially if you're traveling some distance to view. Please note that appliances and heating systems have not been tested and therefore no warranties can be given as to their good working order.

 **RICS** | Regulated  
Estate Agent  
and Letting Agent

dexters.co.uk