



3 Bedrooms | 1 Bathrooms | 1 Reception Rooms

Victoria Avenue | South Croydon | CR2 0QP

£550,000

LOFT

Victoria Avenue |
South Croydon | CR2 0QP
£550,000

- Well-presented semi-detached home
- Large driveway and integral garage
- Vast through lounge with pretty conservatory, offering panoramic views of the garden
- Mature rear garden, on a level plot
- Downstairs WC and utility room
- Three double bedrooms with potential to make a fourth
- Ideal location, tucked away from the hustle and bustle with great access to Sanderstead and Purley
- Excellent schools and transport links in close proximity

Ground Floor

Hallway

Downstairs WC

Reception Room

25'8 x 13'0 (7.82m x 3.96m)

Conservatory

10'8 x 8'2 (3.25m x 2.49m)

Kitchen

11'4 x 9'3 (3.45m x 2.82m)

Utility

11'5 x 5'4 (3.48m x 1.63m)

First Floor

Landing

Bedroom 1

16'1 x 14'4 (4.90m x 4.37m)

Bedroom 2

24'7 x 8'0 (7.49m x 2.44m)

Bedroom 3

13'2 x 9'0 (4.01m x 2.74m)

Bathroom

Outside

Driveway

Rear Garden

97'4 x 29'4 (29.67m x 8.94m)

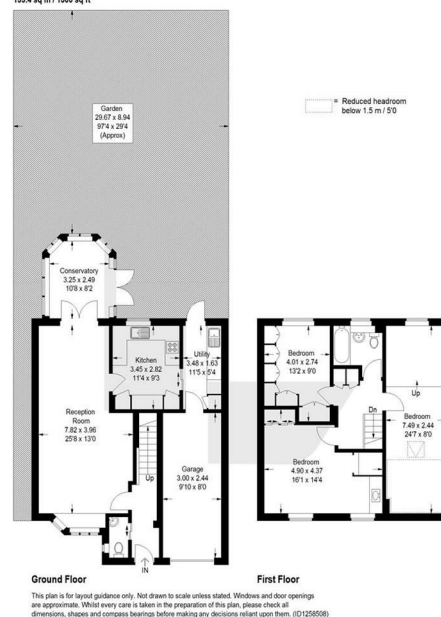
Garage

9'10 x 8'0 (3.00m x 2.44m)



Victoria Avenue, CR2

Approximate Gross Internal Area
(including Garage)
138.4 sq m / 1500 sq ft



EPC Rating: D



0208 660 8070
hello@loft-estates.co.uk
23a High Street, Purley, CR8 2AF