



Worcester Road, Guildford, GU2 9SZ

Guildford

£2,800 pcm

Deposit: £3,230

Date First Available: 22/08/2026

Furnishing: Furnished

A well-presented and furnished four-bedroom semi-detached house situated in a highly convenient position, easy access to the University of Surrey and moments from Guildford town centre.

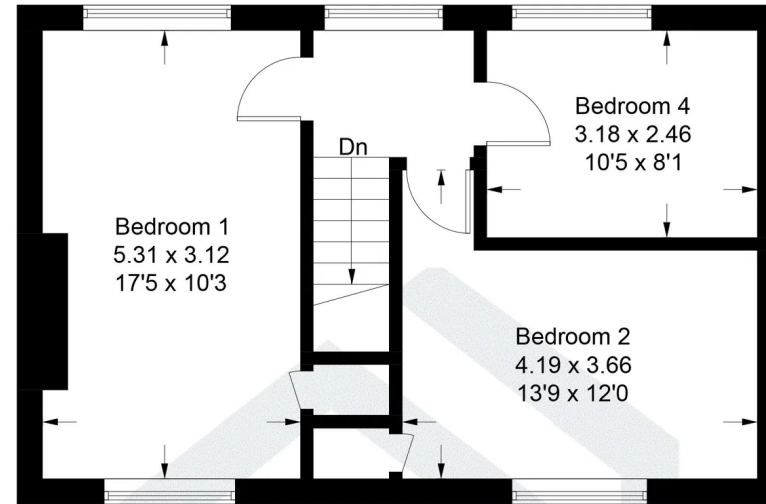
The property offers spacious and versatile accommodation throughout, comprising a bright and modern kitchen fitted with all appliances, a good-sized sitting room, four well-proportioned bedrooms, a family bathroom and a downstairs cloakroom. The property also benefits from a large garden and enjoys easy access to local amenities, shops and bus routes.

The property is available furnished and represents an excellent opportunity for families or professionals seeking a comfortable home in this popular residential location.

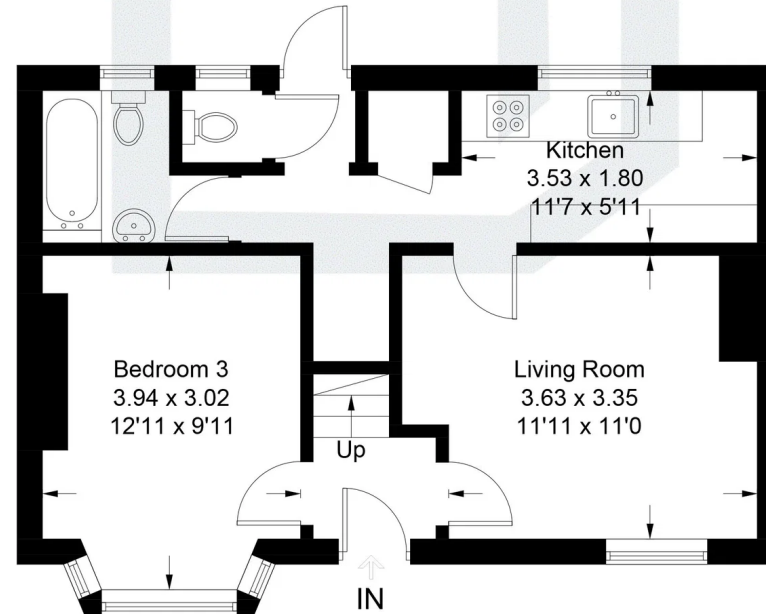
- Semi-detached house
- 4 good-sized bedrooms
- Furnished
- Large garden
- Smart kitchen
- Modern bathroom
- Easy access to Surrey University
- Moments from Guildford town centre
- Spacious living room
- Close to local amenities and bus stop

Worcester Road, Guildford, GU2

Approximate Gross Internal Area = 91.5 sq m / 985 sq ft



First Floor



Ground Floor

Illustration for identification purposes only, measurements are approximate, not to scale. Fourlabs.co © (ID1294861)



Pacey Wingent Dickson Property Partnership Limited
197 Lower Road Great Bookham Leatherhead KT23 4DG

01372 456 804
info@pwdproperty.co.uk
<https://pwdproperty.co.uk/>