



*jordan fishwick*

MANCHESTER  
Greenside Street



**Greenside Street,  
Manchester, M11 2FZ**  
**£995 Per Calendar Month**



**The Property**

**\*\*\* AVAILABLE NOW \*\*\*** A well-presented two-bedroom first floor apartment in a secure apartment building. Located conveniently close to Ashton Old Road for quick access to Manchester City Centre and the Etihad Campus. The fully furnished apartment benefits from; entrance hallway, open plan living / dining area with modern fitted kitchen inc. appliances, two double bedrooms with storage and a three-piece bathroom suite. The landlord is happy to put a double bed in the second bedroom should this be requested at time of application. On-street parking available without the need for a permit from the council, at the time of writing. Furnished. To view, please contact Didsbury office.

EPC Rating C // Council Tax Band A

**Directions**

**M11 2FZ**



- Available Now
- Two Double Bedroom
- First Floor Apartment
- Furnished
- Great Location near to Local Amenities
- Modern Decor Throughout
- On Street Parking
- Council Tax Band A
- EPC Rating C

Postcode - M11 2FZ

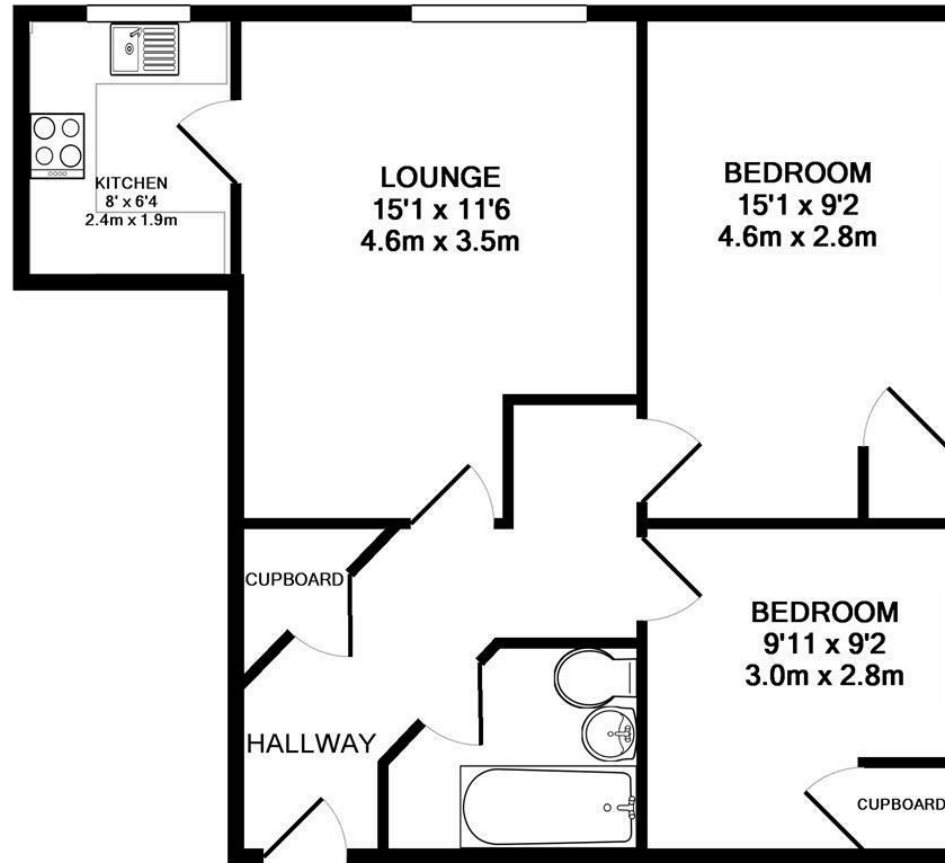
EPC Rating - C

Floor Area - sq ft

Local Authority - Manchester

Council Tax - A





TOTAL APPROX. FLOOR AREA 585 SQ.FT. (54.3 SQ.M.)

Whilst every attempt has been made to ensure the accuracy of the floor plan contained here, measurements of doors, windows, rooms and any other items are approximate and no responsibility is taken for any error, omission, or mis-statement. This plan is for illustrative purposes only and should be used as such by any prospective purchaser. The services, systems and appliances shown have not been tested and no guarantee as to their operability or efficiency can be given

Made with Metropix ©2016



These particulars are believed to be accurate but they are not guaranteed and do not form a contract. Neither Jordan Fishwick nor the vendor or lessor accept any responsibility in respect of these particulars, which are not intended to be statements or representations of fact and any intending purchaser or lessee must satisfy himself by inspection or otherwise as to the correctness of each of the statements contained in these particulars. Any floorplans on this brochure are for illustrative purposes only and are not necessarily to scale.

Offices also at: Wilmslow, Macclesfield, Hale, Sale, Chorlton, Glossop, Manchester & Salford

757-759 Wilmslow Road, Didsbury Village, Manchester

**0161 445 4480**

didsbury@jordanfishwick.co.uk  
www.jordanfishwick.co.uk