



Whimberry Close

Salford



£280,000

Whimberry Close

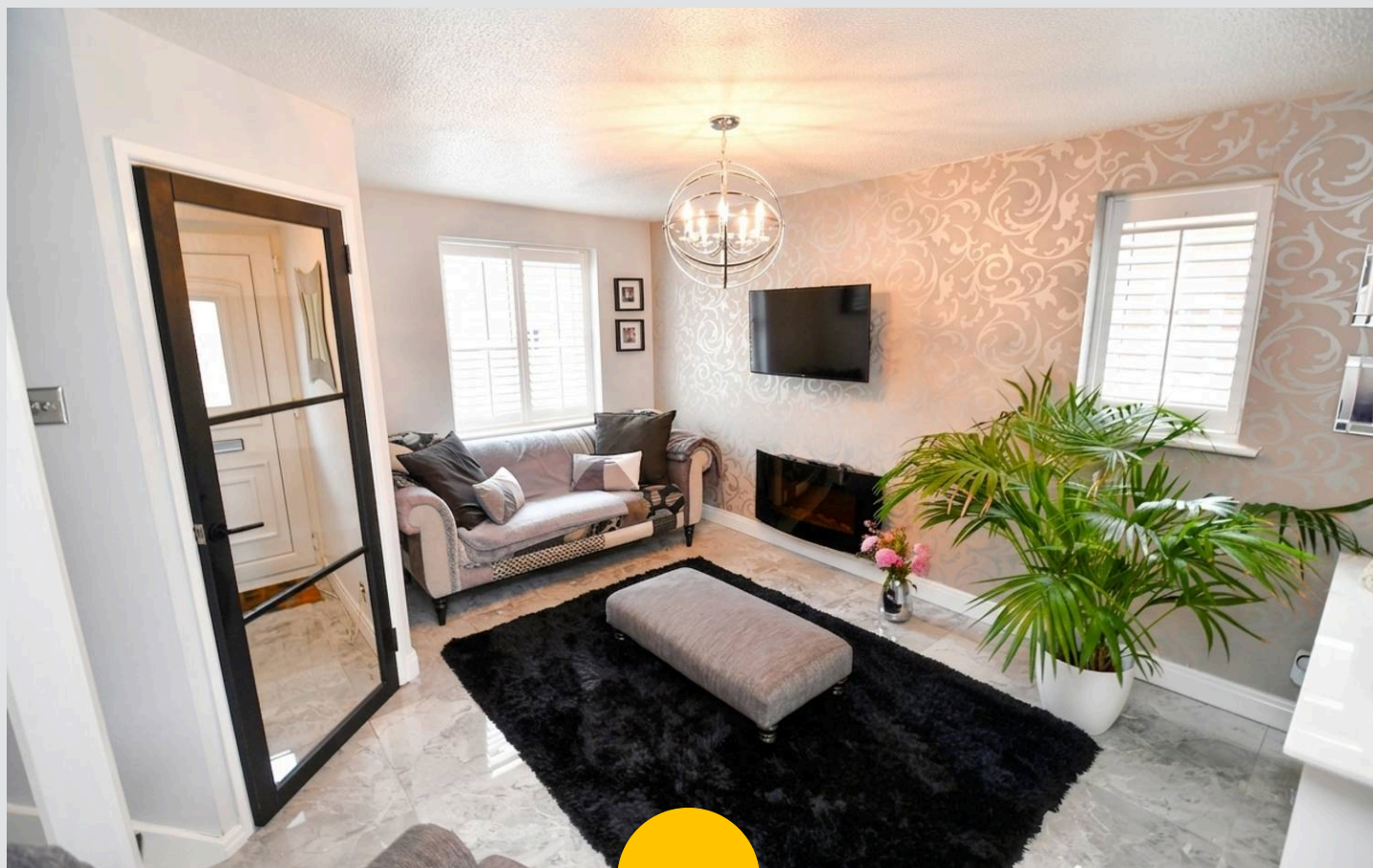
Salford

This modern, three bedroom semi-detached property has been beautifully decorated throughout. Within walking distance of Salford Quays, Media City and Manchester City Centre, this property offers a contemporary style in a convenient location.

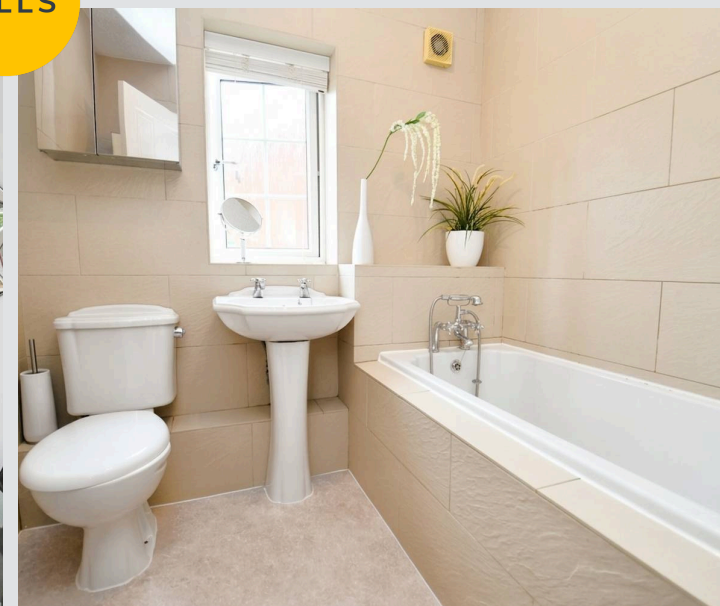
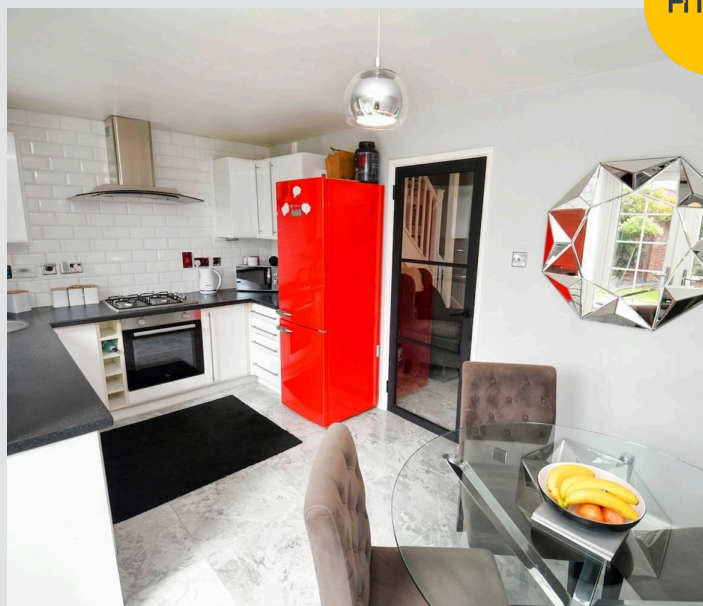
Council Tax band: A

Tenure: Leasehold

- Modern Three Bedroom, Semi-Detached Property
- Within Walking Distance of Salford Quays, Media City and Manchester City Centre
- Stylish Lounge and a Downstairs W/C
- Contemporary Kitchen Diner and a Modern, Three-Piece Family Bathroom
- Three Well-Proportioned Bedrooms
- Driveway to the Side Providing Ample Off-Road Parking
- Beautifully Presented Garden to the Rear with Laid-to-Lawn Grass, Paving and Mature Plants
- Within Easy Access of a Range of Bars, Shops and Restaurants
- Close to Excellent Transport Links Throughout Manchester
- Viewing is Highly Recommended!



HILLS



Entrance Hallway

A welcoming entrance with a ceiling light point and marble tiled flooring.

Lounge

15' 2" x 11' 3" (4.63m x 3.44m)

A spacious lounge with a ceiling light point, two double glazed windows, radiator and marble tiled flooring.

Kitchen Diner

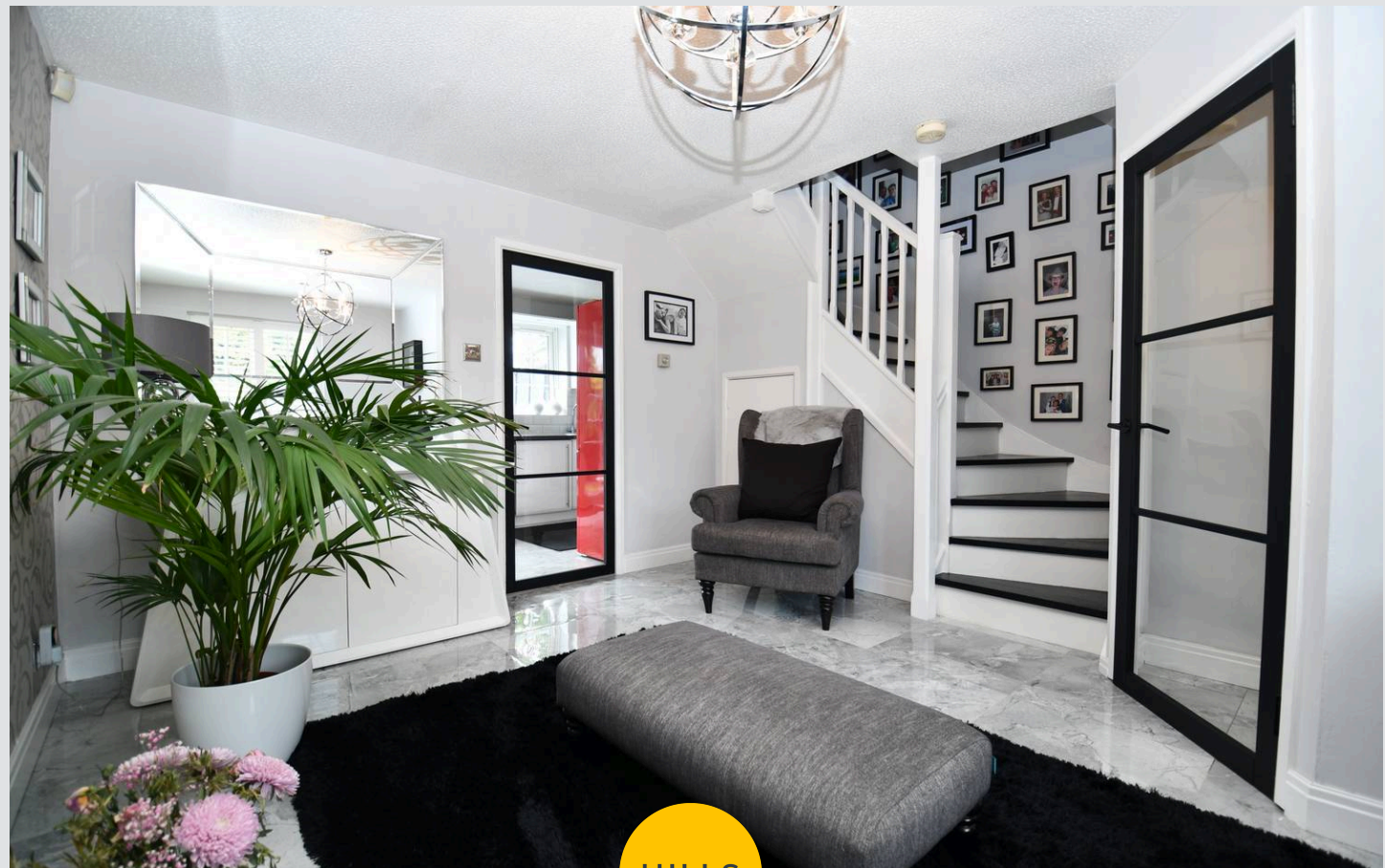
14' 4" x 8' 10" (4.36m x 2.68m)

Featuring fitted units with integral hob and oven, washer. Space for dishwasher. Complete with ceiling light point, double glazed windows with grey marble tiled flooring.

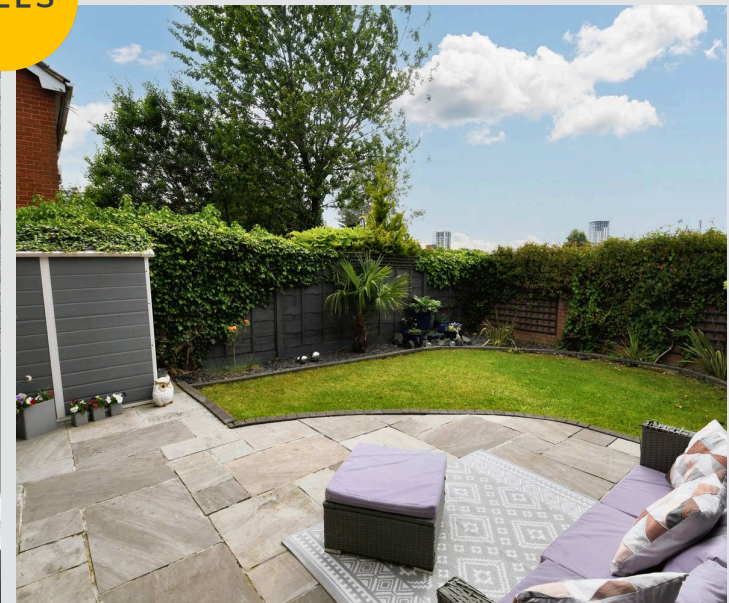
w/c

6' 4" x 2' 11" (1.94m x 0.89m)

Featuring with W/C and hand wash basin. Complete with ceiling light point, double glazed window, radiator and tiled flooring.



HILLS



Landing

Complete with a ceiling light point and carpet flooring.

Bedroom One

12' 0" x 8' 4" (3.65m x 2.54m)

Featuring ceiling light point, two double glazed windows, radiator. Complete with vinyl flooring.

Bedroom Two

8' 11" x 7' 10" (2.72m x 2.40m)

Featuring ceiling light point, double glazed window, radiator. Complete with vinyl flooring.

Bedroom Three

8' 10" x 6' 3" (2.68m x 1.91m)

Featuring ceiling light point, double glazed window, radiator. Complete with vinyl flooring.

Bathroom

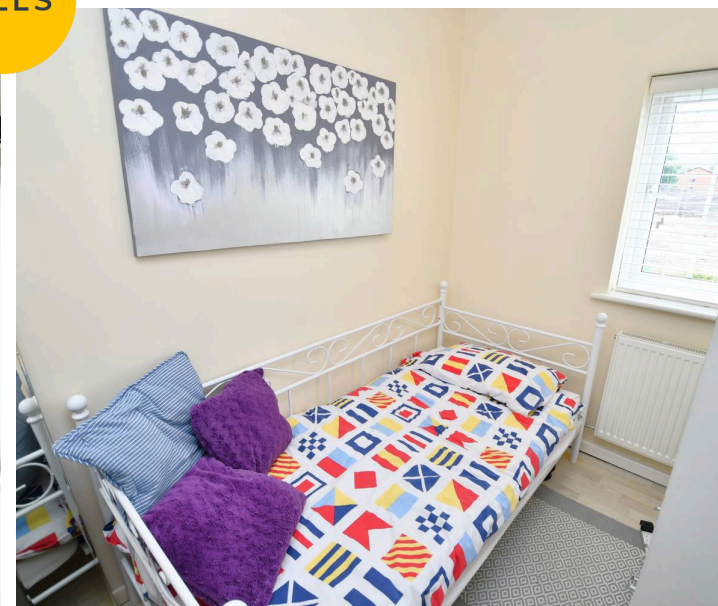
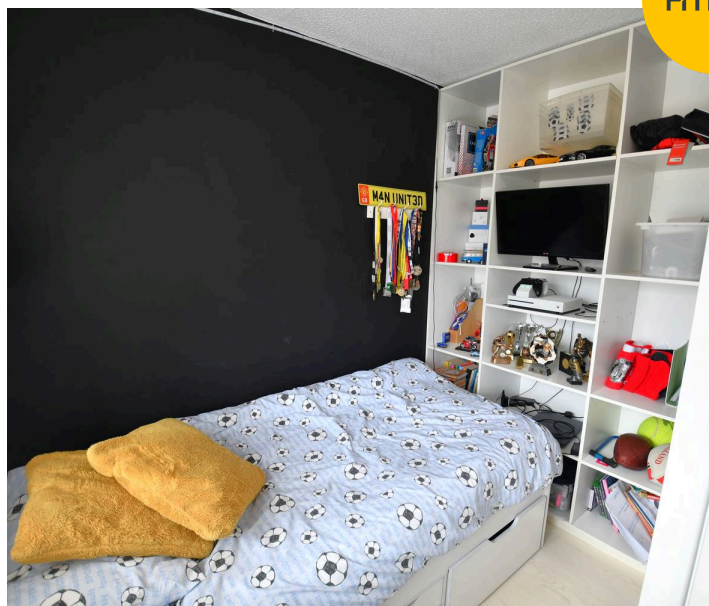
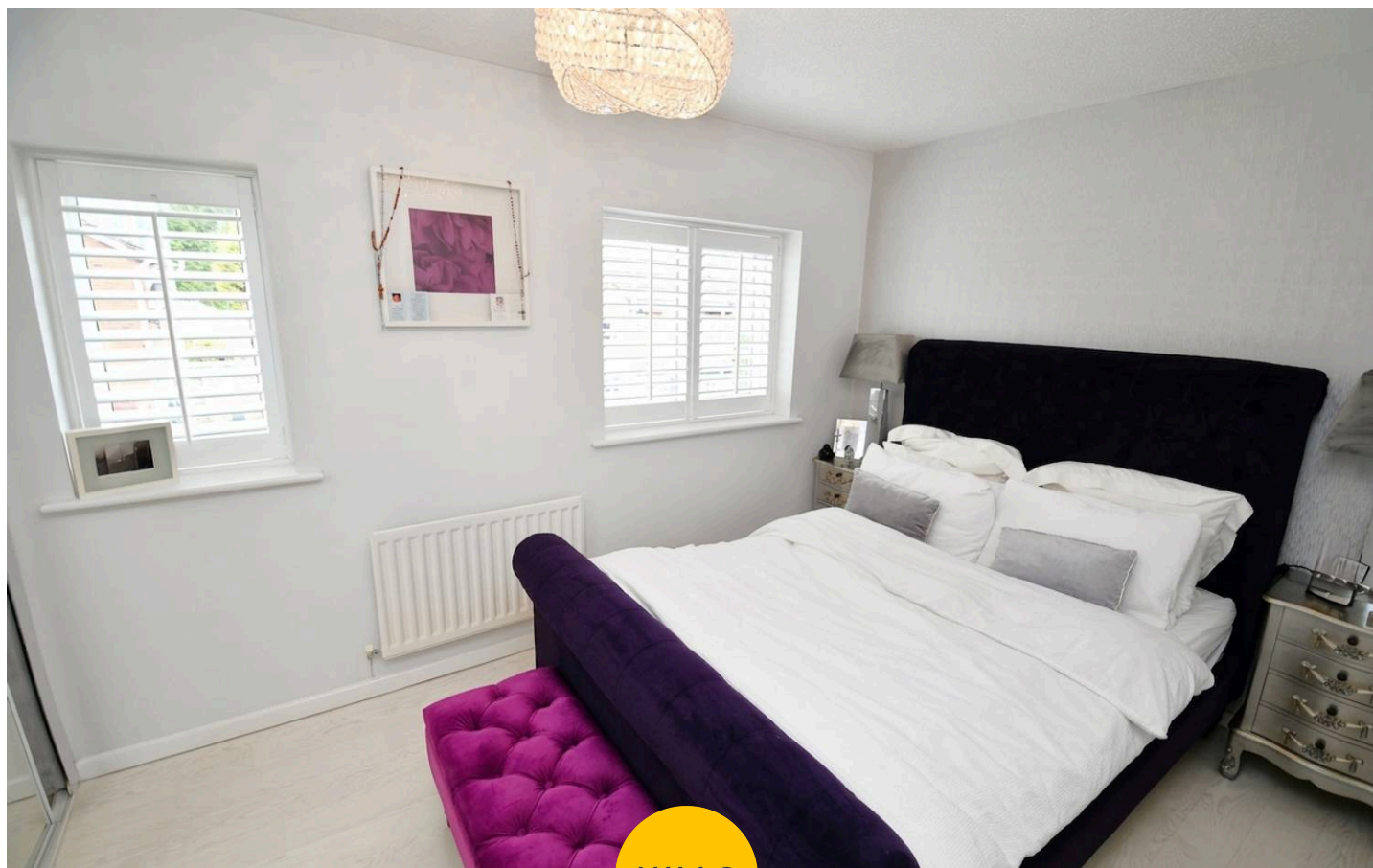
6' 7" x 6' 2" (2.01m x 1.89m)

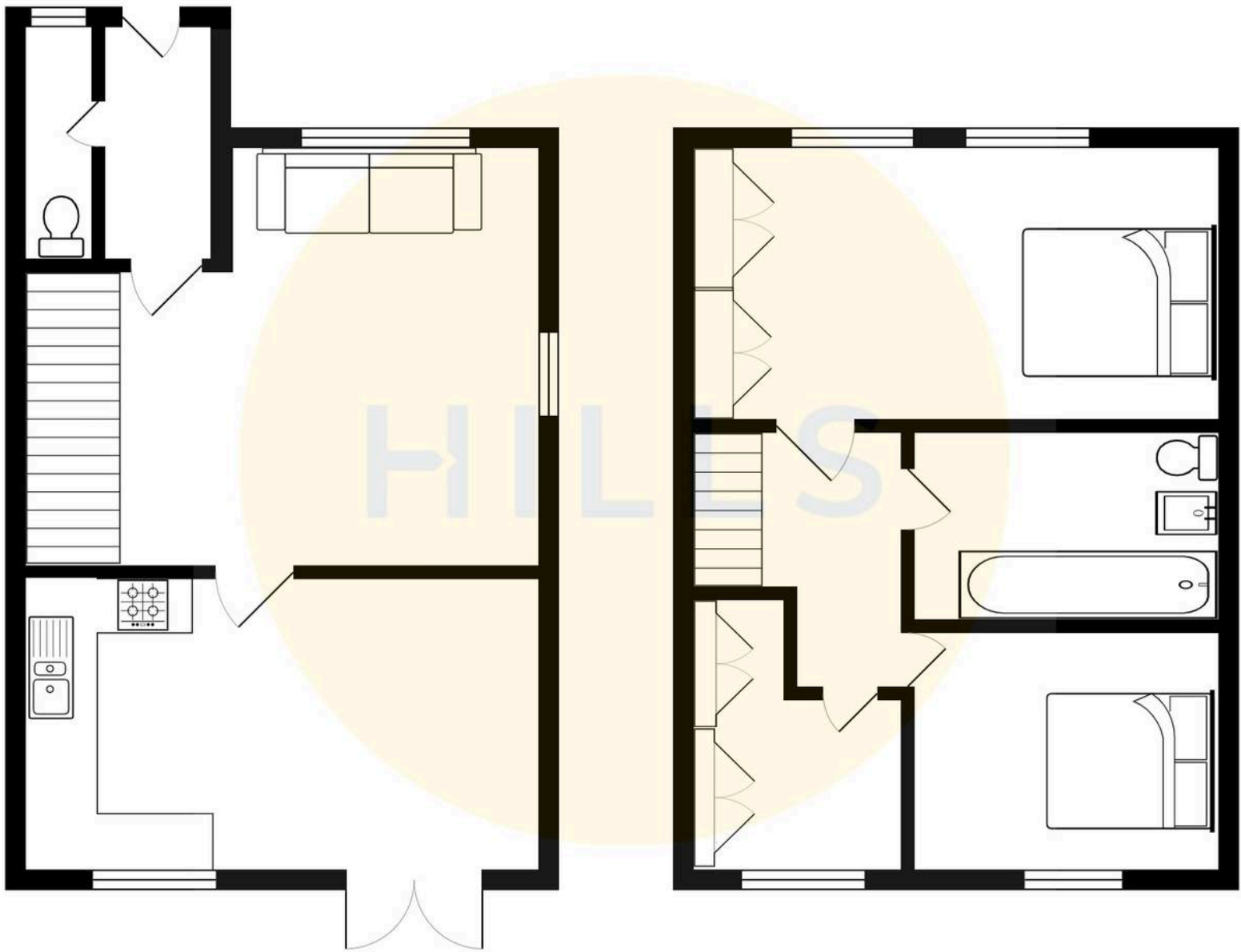
A modern bathroom featuring a three - piece suite including a shower over the bath with a hand wash basin and W/C.

Featuring ceiling light point, double glazed window. Complete with tiled walls and vinyl flooring.

External

To the front of the property is a beautifully maintained lawn garden with a driveway to the side providing ample off road parking. To the rear of the property is a garden with mature plants, stones and parking.







Hills | Salfords Estate Agent

Hills Residential, Sentinel House Albert Street – M30 0SS

0161 707 4900

sales@hills.agency

www.hills.agency/



By law, we are required to conduct anti-money laundering checks on all potential buyers and sellers. In line with HMRC guidelines, our trusted partner, Coadjute, will securely manage these checks on our behalf. A non-refundable fee of £45 + VAT per person will apply, and Coadjute will handle the payment. Once an offer is accepted, Coadjute will send a secure link for you to complete the biometric checks. These checks must be completed before we can send the memorandum of sale to all parties. PLEASE NOTE: The Agent has not tested any equipment, fixtures, fittings or services so cannot verify that they are in working order or fit for the purpose. References to the properties tenure are based on information supplied by the seller. You are advised to check the availability of this property before travelling any distance to view. Every effort has been made to ensure these particulars are correct and not misleading but their accuracy is not guaranteed nor do they form part of any contract.