

## Saltram Crescent, W9

£369 Per week

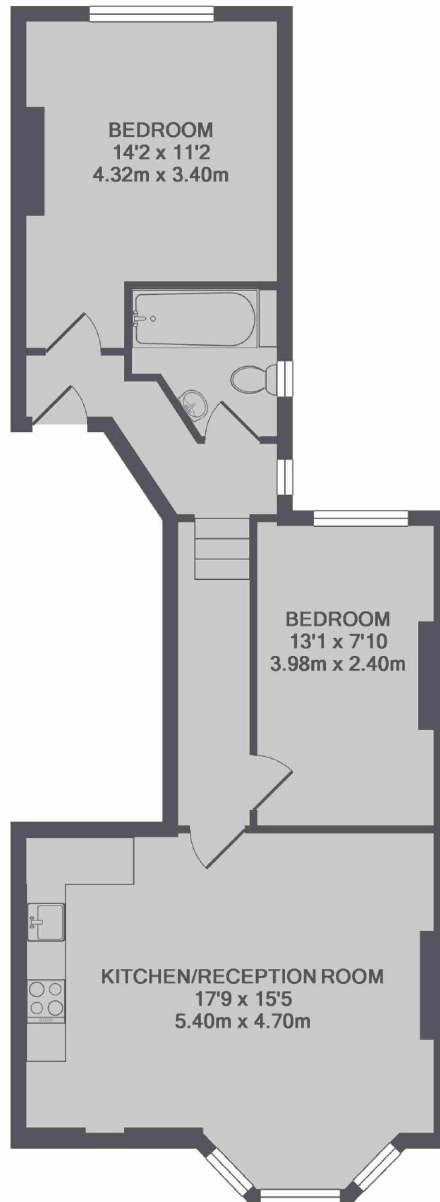
Newly refurbished throughout, this first floor flat has a large open-plan reception room with wooden flooring, two double bedrooms and a stylish bathroom suite.

Now a one way street, Saltram Crescent is a lovely quiet residential tree lined street providing easy access to the vast amenities of Queens Park as well as Maida Vale and Portobello Road.

### Features

NEWLY REFURBISHED  
Period Conversion  
First Floor Flat  
Two Bedrooms  
Open-Plan Reception  
Great Location

## Saltram Crescent, Maida Vale, W9



TOTAL APPROX. FLOOR AREA 615SQ.FT. (57.1SQ.M.)

### Contact

To arrange a viewing call our office on the number below or visit our website.



Energy Rating: D. We aim to make our particulars both accurate and reliable. However they are not guaranteed; nor do they form part of an offer or contract. If you require clarification on any points then please contact us, especially if you're traveling some distance to view. Please note that appliances and heating systems have not been tested and therefore no warranties can be given as to their good working order.