



Highwood Close, SE22 | Offers In Excess Of £350,000

02087028222

[eastdulwich@pedderproperty.com](mailto:eastdulwich@pedderproperty.com)

**pedder**  
We live local







# In General

- Two double bedrooms
- Excellent condition throughout
- Top floor
- Lift-access
- 24-ft open-plan kitchen reception
- Allocated off-street parking

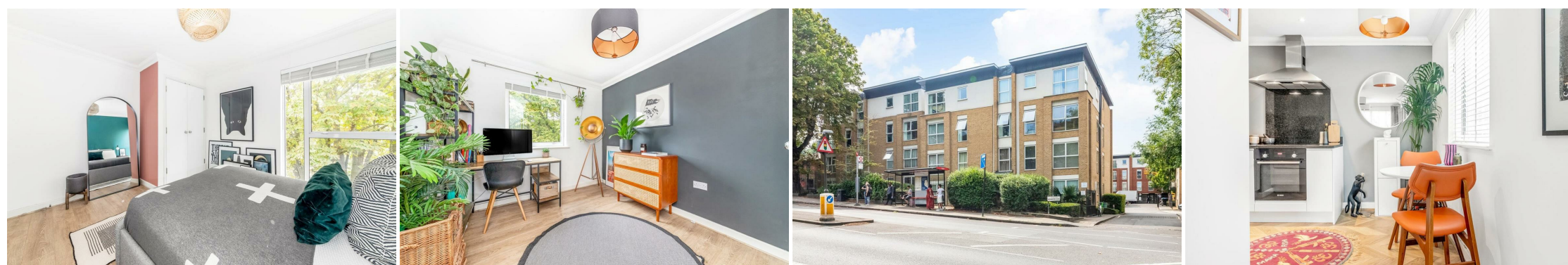
# In Detail

Gorgeous, spacious and beautifully bright top-floor purpose built apartment ideally located between East Dulwich and Forest Hill.

Boasting over 630 Sq Ft of internal space on the third floor of this modern building – the property has been lovingly modernised by the current owner who is looking to upsize in the area. There is a stunning 24-ft dual aspect open-plan kitchen-reception with new integrated appliances. There are two comfortable double bedrooms including the 12x11 ft principal room and a modern family bathroom with new flooring throughout.

Highwood Close is ideally located for the gorgeous parks and green spaces of Dulwich Park, Sydenham Woods and Horniman Museum with its gardens as well as the independent shops, bars and restaurants of Lordship Lane, North Cross Road and London Road. There are strong transport links into The City and West End from Forest Hill station (0.6 miles) and East Dulwich station (1.6 miles) as well as bus/cycle routes through the neighbouring Dulwich Village, Herne Hill and Peckham Rye.

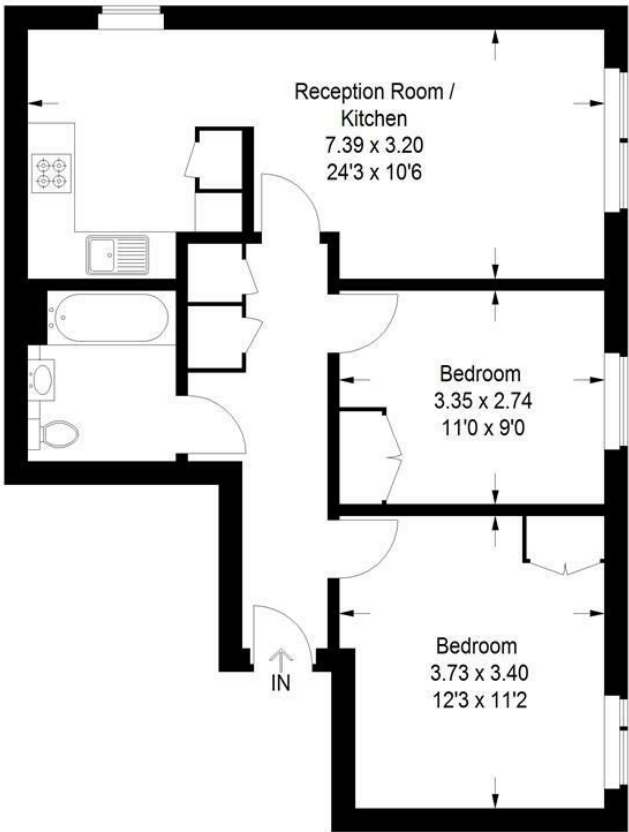
EPC: D | Council Tax Band: C | Lease: 130 years remaining | SC: £3,160 pa | GR: £350 pa | BI : Incl in SC



# Floorplan

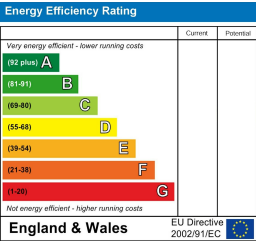
## Sherwood Court, SE22

Approximate Gross Internal Area  
59.0 sq m / 635 sq ft



### Third Floor

Copyright www.pedderproperty.com © 2024  
These plans are for representation purposes only as defined by RICS - Code of Measuring Practice. Not drawn to Scale. Windows and door openings are approximate. Please check all dimensions, shapes and compass bearings before making any decisions reliant upon them.



Pedder Property Ltd trading as Pedder for themselves and for the vendor/landlord of this property whose agents they are, give notice that (1) these particulars do not constitute any part of an offer or contract, (2) all statements contained within these particulars are made without responsibility on the part of Pedder or the vendor/landlord, (3) whilst made in good faith, none of the statements contained within these particulars are to be relied upon as a statement of representation or fact, (4) any intending purchaser/tenant must satisfy him/herself by inspection or otherwise as to the correctness of each of the statements contained within these particulars, (5) the vendor/landlord does not make or give either Pedder or any person in their employment any authority to make or give representation or warranty whatsoever in relation to this property.