

TO LET



Clayworks, Hanley

1 Bedroom, 1 Bathroom, Studio

£825 pcm



Clayworks, Hanley

1 Bedroom, 1 Bathroom

£825 pcm

Date available: Available Now

Deposit: £951

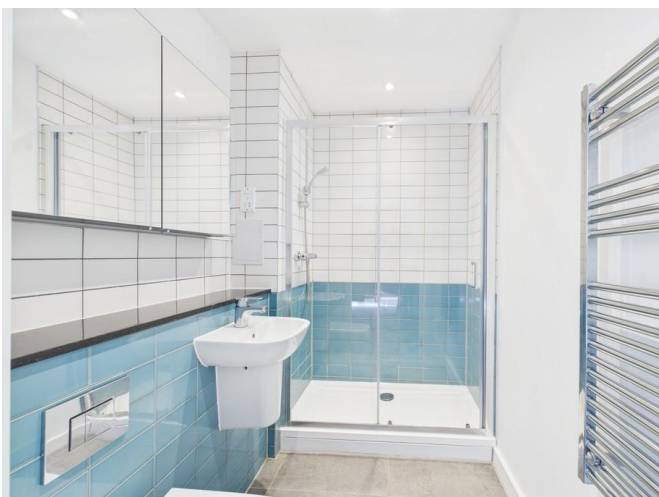
Unfurnished

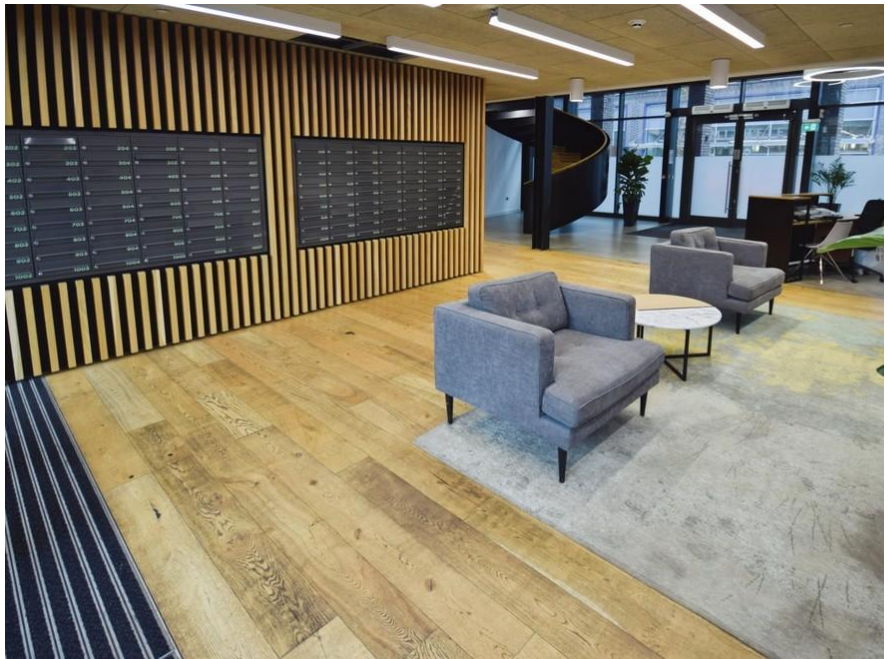
Council Tax band: A

- First month rent free for June move
- Open plan lounge and kitchen
- Double bedroom
- Shower room
- Lifts to all floors
- Council tax band A
- Hanley town centre

FIRST MONTH RENT FREE FOR JUNE MOVE IN. Martin and co co offer for rent this stunning 4th floor apartment located in the prestigious Clayworks development which is within walking distance from Hanley town centre. The Clayworks development is a highly sought after block of apartments offering a daytime residential service manager, weekend concierge, private gardens, sun terrace, multi function room and lifts to all floors. The flat comprises an open plan lounge and kitchen with a partially separate double bedroom area with a shower room. PLEASE NOTE a non deposit scheme is available with this property

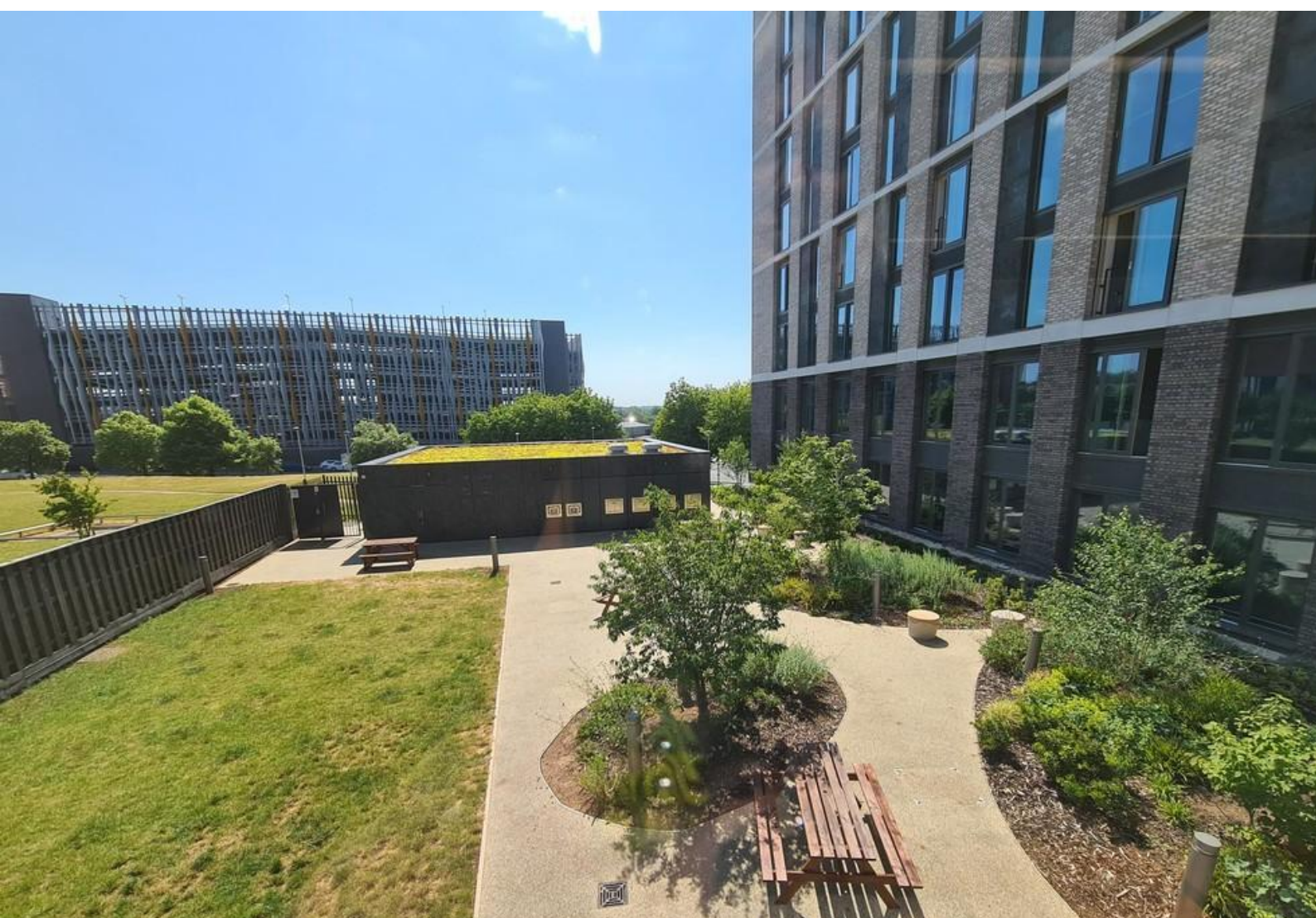






Energy Efficiency Rating

	Current	Potential
Very energy efficient - lower running costs		
(92-100) A		
(81-91) B	85	85
(69-80) C		
(55-68) D		





Martin & Co Stoke on Trent

12 Albion Street • Stoke-On-Trent • ST1 1QH

T: 01782 262880 • E: stokeontrent@martinco.com

01782 262880

<http://www.martinco.com>



Accuracy: References to the Tenure of a Property are based on information supplied by the Seller. The Agent has not had sight of the title documents. A Buyer is advised to obtain verification from their Solicitor. Items shown in photographs including but not limited to carpets, fixtures and fittings are not included unless specifically mentioned within the sales particulars. They may however be available by separate negotiation. Buyers must check the availability of any property and make an appointment to view before embarking on any journey to see a property. No person in the employment of the agent has any authority to make any representation about the property, and accordingly any information given is entirely without responsibility on the part of the agents, sellers(s) or lessors(s). Any property particulars are not an offer or contract, nor for part of one. **Sonic / Laser Tape:** Measurements taken using a sonic / Laser tape measure may be subject to a small margin of error. **All Measurements:** All Measurements are Approximate. **Services Not tested:** The Agent has not tested any apparatus, equipment, fixtures and fittings or services and so cannot verify that they are in working order or fit for the purpose. A Buyer is advised to obtain verification from their Solicitor or Surveyor.