

GILMORE ESTATES

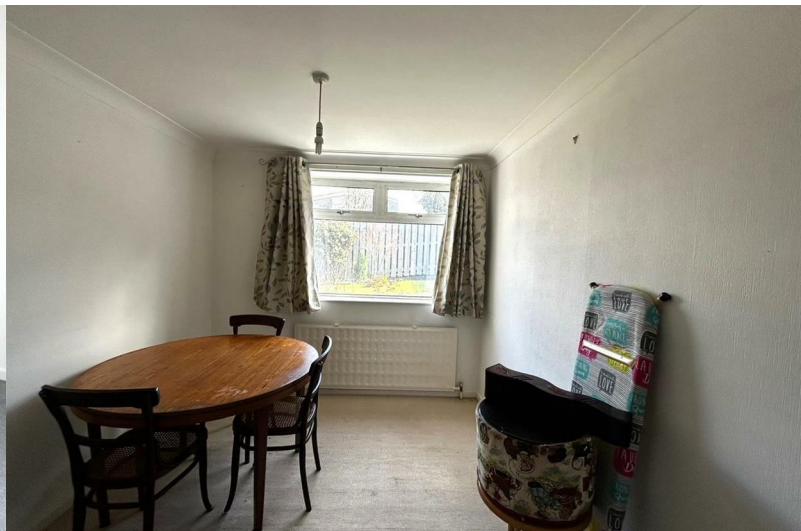
Property Sales & Lettings



Riding Dene

Mickley, Stocksfield, NE43 7DH

Offers Over £155,000



Riding Dene

Mickley, Stocksfield, NE43 7DH

Offers Over £155,000



ENTRANCE HALL

6'2" x 3'2" (1.90 x 0.97)

UPVC entrance door, central heating radiator, stairs to first floor.

LOUNGE

13'10" x 13'10" (4.23 x 4.24)

UPVC double glazed window to front, back boiler, open to :-

DINING ROOM

9'8" x 8'3" (2.96 x 2.54)

UPVC double glazed window to rear, central heating radiator, serving hatch to kitchen.

KITCHEN

9'7" x 8'3" (2.93 x 2.52)

UPVC double glazed window and door to rear, wall and base units with laminated worktop surfaces, stainless steel sink unit and drainer, gas cooker point, plumbed for automatic washer, under stairs cupboard.

TO THE FIRST FLOOR

6'3" x 8'1" (1.91 x 2.48)

BEDROOM ONE

10'11" x 11'10" (3.35 x 3.61)

UPVC double glazed window to front, central heating radiator, built in wardrobes with glazed doors.

BEDROOM TWO

8'9" x 10'6" (2.69 x 3.21)

UPVC double glazed window to rear, central heating radiator, built in cupboard.

BEDROOM THREE

9'1" x 6'2" (2.77 x 1.90)

UPVC double glazed window to front, central heating radiator, built in storage.

SHOWER ROOM

5'8" x 6'2" (1.75 x 1.90)

Walk in shower with electric shower, w.c, wash hand basin, laminated walls, chrome towel rail, UPVC double glazed window to rear.

GARAGE

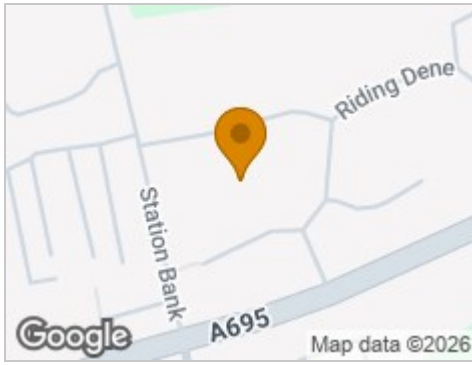
Situated in a nearby block.

EXTERNALLY

Enclosed with lawned gardens with mature plants and shrubs.



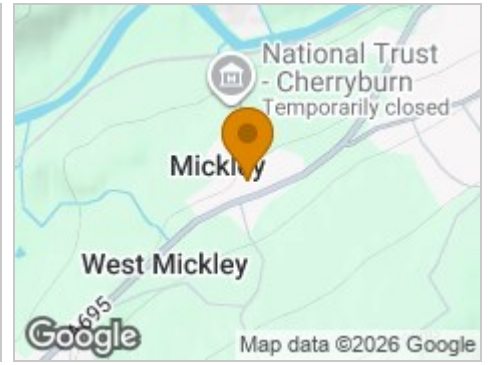
Road Map



Hybrid Map



Terrain Map



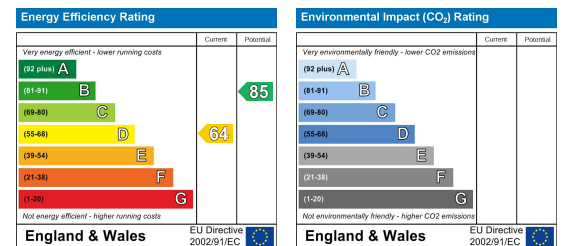
Floor Plan



Viewing

Please contact our Gilmore Estates Office on 01661 831224 if you wish to arrange a viewing appointment for this property or require further information.

Energy Efficiency Graph



These particulars, whilst believed to be accurate are set out as a general outline only for guidance and do not constitute any part of an offer or contract. Intending purchasers should not rely on them as statements of representation of fact, but must satisfy themselves by inspection or otherwise as to their accuracy. No person in this firm's employment has the authority to make or give any representation or warranty in respect of the property.