



Conway Street, W1T 6BF
£2,500 PCM

coopers
OF LONDON EST. 1986

Conway Street, W1T

- AVAILABLE EARLY MARCH
- ONE BEDROOM
- GARDEN FLAT
- HEART OF FITZROVIA
- FURNISHED
- EPC - TBC

A charming and surprisingly bright basement garden flat set within an attractive period building on this quiet residential street in the heart of Fitzrovia.

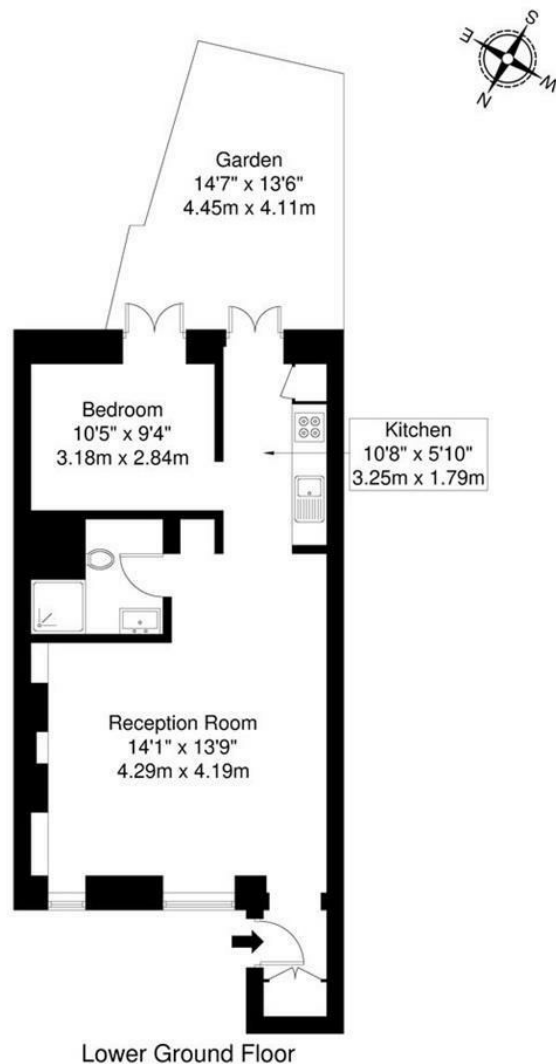
This well-proportioned one-bedroom garden-level apartment benefits from direct access to a private rear garden – a rare and valuable feature in central London – providing excellent outdoor space for relaxing, dining or working from home.

A charming and surprisingly bright basement garden flat set within an attractive period building on this quiet residential street in the heart of Fitzrovia.

This well-proportioned one-bedroom garden-level apartment benefits from direct access to a private rear garden – a rare and valuable feature in central London – providing excellent outdoor space for relaxing, dining or working from home.



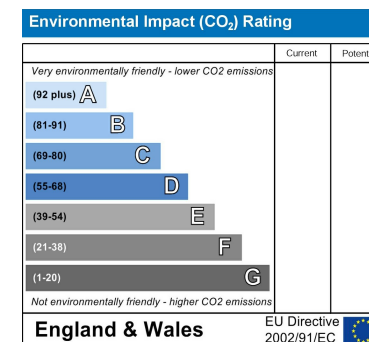
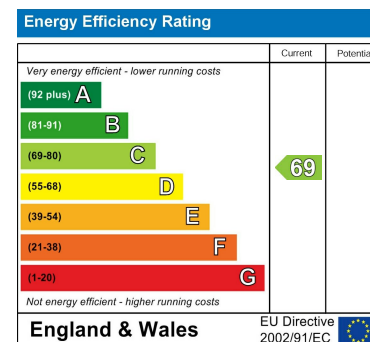




Conway Street, W1T

Total Gross Internal Area = 51.3 sq m / 552 sq ft

All Measurements are approximate and for identification guideline purposes only, not to scale.
Compliant with the RICS code of measuring practice



Viewing

Strictly by appointment with:
Coopers of London, 22 Cleveland Street,
Fitzrovia, London W1T 4JB
info@coopersonlondon.co.uk

0207 580 9658

These particulars, whilst believed to be accurate are set out as a general outline only for guidance and do not constitute any part of an offer or contract. Intending purchasers should not rely on them as statements or representation of fact, but must satisfy themselves by inspection or otherwise as to their accuracy. No person in this firm's employment has the authority to make or give any representation or warranty in respect of the property.