



**Guide Price**  
**£550,000**

**Freehold**

4x  2x  3x 

**Lansdowne Avenue,  
Maidstone, Kent ME15**

**OVER 60?**

Secure this property  
for up to **59% less!**

*Wards*  
Helping you move forwards





## Main features

- Immaculately presented with modern decor throughout
- Built-in kid's soft play area
- Large driveway for multiple cars
- Stunning kitchen/family area leading out to a large sunny garden
- Set in a private cul-de-sac nearby to local schools, shops and amenities

## Accommodation

### GROUND FLOOR

Entrance Hall  
Storage: 9'0 x 8'9 (2.75m x 2.67m)  
Cloakroom  
Lounge: 13'6 x 12'9 (4.12m x 3.89m)  
Games Area: 17'9 x 11'5 (5.41m x 3.48m)  
Play Area: 13'8 x 8'5 (4.17m x 2.57m)  
Dining Area: 11'5 x 9'9 (3.48m x 2.97m)  
Kitchen/Family Area: 27'3 x 15'6 (8.31m x 4.73m)

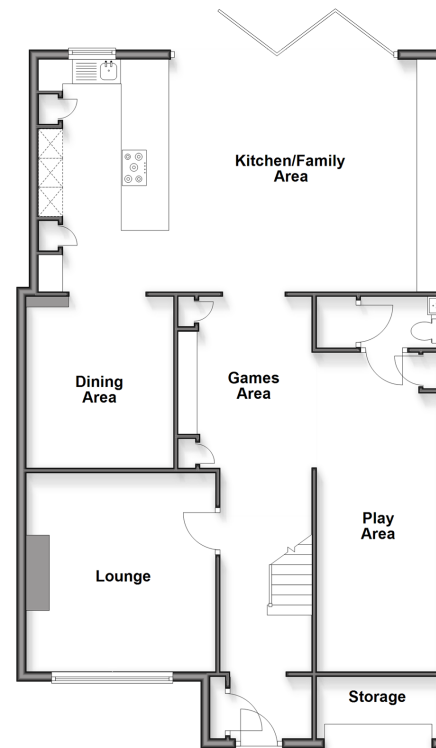
### FIRST FLOOR

Landing  
Bedroom 1: 13'7 x 12'2 (4.14m x 3.71m)  
En-Suite Shower Room  
Bedroom 2: 14'2 x 12'3 (4.32m x 3.74m)  
Bedroom 3: 13'3 x 8'3 (4.04m x 2.52m)  
Bedroom 4: 9'8 x 8'8 (2.95m x 2.64m)  
Bathroom: 13'3 x 8'3 (4.04m x 2.52m)

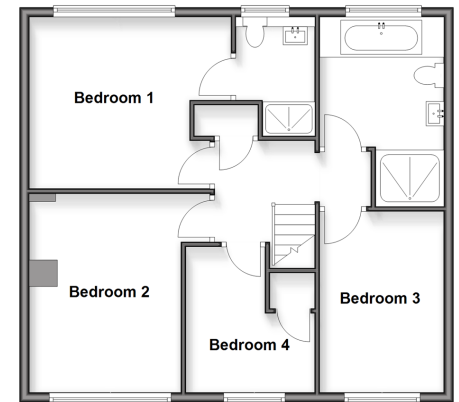
### OUTSIDE

Front and Rear Gardens  
Garage and Driveway

**Ground Floor**  
Approx. 113.1 sq. metres (1217.2 sq. feet)



**First Floor**  
Approx. 66.1 sq. metres (711.5 sq. feet)



**Call Maidstone - 01622 683737 ■ [wardsofkent.co.uk](http://wardsofkent.co.uk)**

■ Legal advice should be taken to verify fixtures/fittings, planning, alterations and/or lease details  
■ Through a Homewise Home For Life Plan people aged 60+ can secure this property for up to 50% less, by purchasing a Lifetime Lease

■ Appliances & services are untested, dimensions are approximate and floor plans are not to scale



13159263/20251216/TB/TB